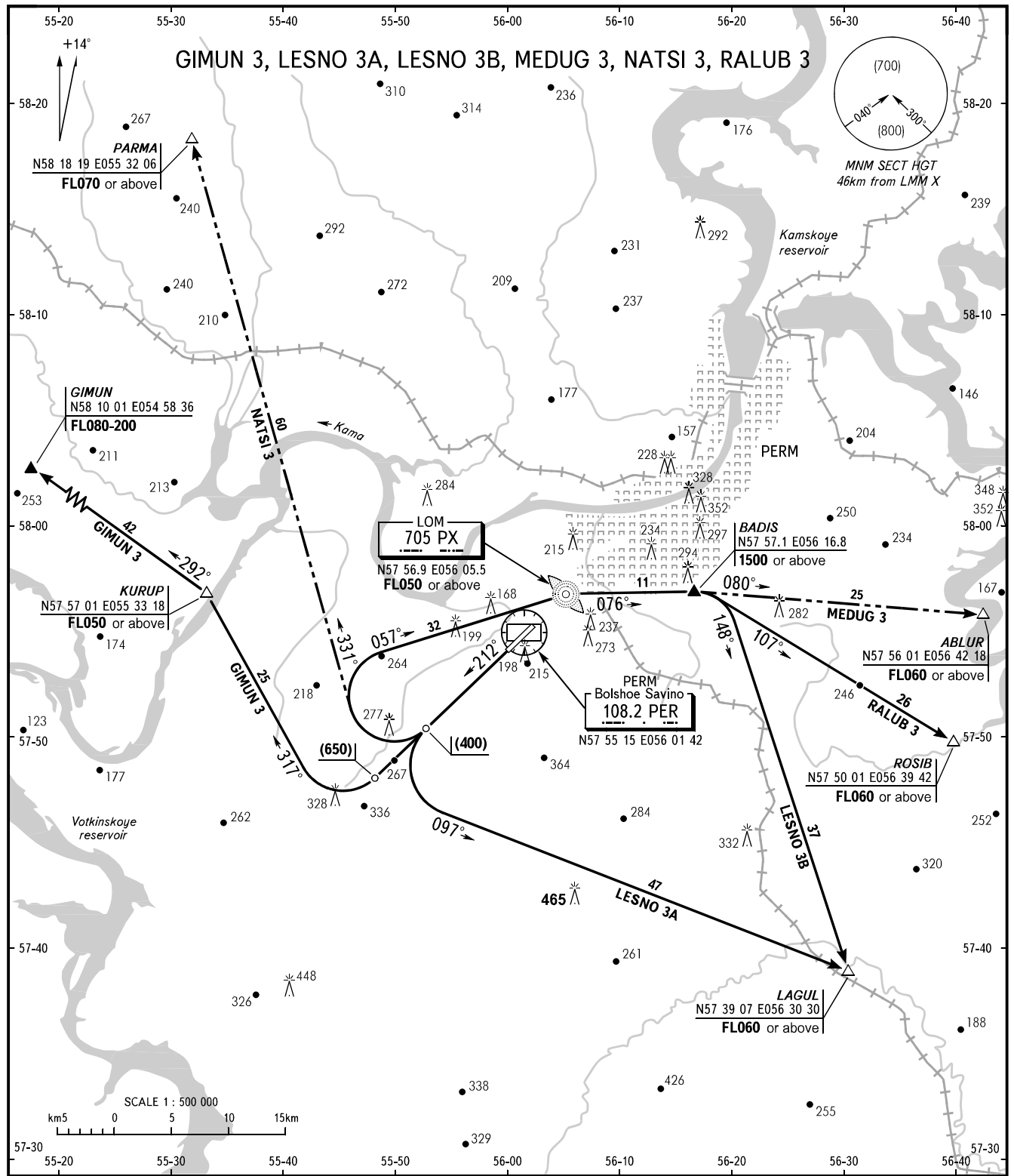


STANDARD DEPARTURE CHART
INSTRUMENT (SID) - ICAO

TRANSITION
HEIGHT : (900)

PERM, RUSSIA
BOLSHOE SAVINO
RWY 21



START	(Additionally serves as TOWER and TAXIING)	124.0	WARNING A minimum climb gradient of 4.0% is required up to (600) for these procedures.
APPROACH	(Additionally serves as RADAR)	127.1	
CONTROL	Sector NORTH	135.1	
	Sector SOUTH	133.7	

BEARINGS AND TRACKS ARE MAGNETIC
ALTITUDES, HEIGHTS AND ELEVATIONS ARE IN METRES
DISTANCES ARE IN KILOMETRES

AIRAC AMDT 02/12

Federal Air Transport Agency

CHANGE: VORDME, SID GIMUN 3