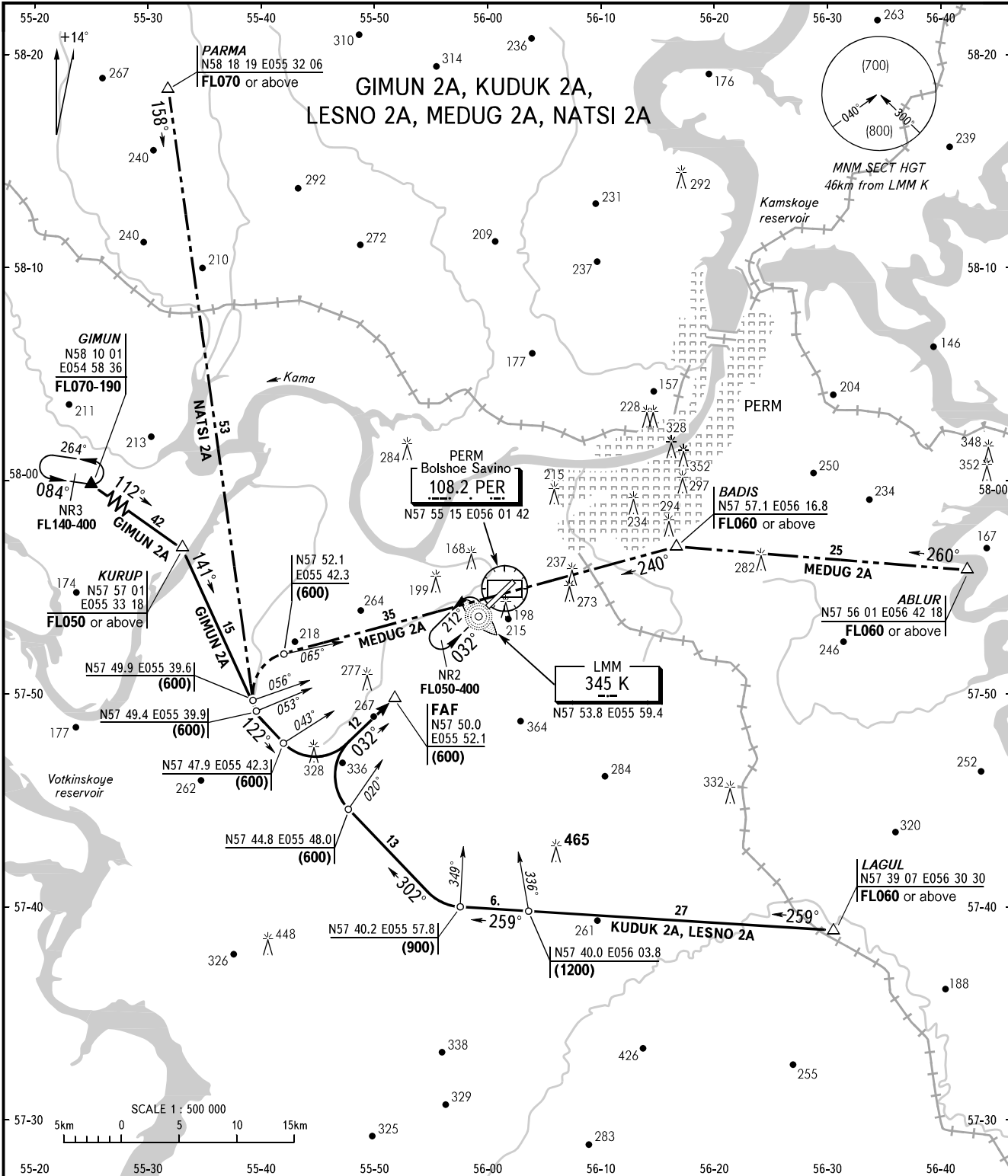


STANDARD ARRIVAL CHART  
INSTRUMENT (STAR) - ICAO

TRANSITION  
LEVEL: **1**

PERM, RUSSIA  
BOLSHOE SAVINO  
RWY 03



APPROACH (Additionally serves as RADAR) **127.1**  
START (Additionally serves as TOWER and TAXIING) **124.0**

- 1** TRANSITION LEVEL:  
 - FL050 when atmospheric pressure is 749mm mercury column or above;  
 - FL060 when atmospheric pressure is less than 749mm and is 722mm or above;  
 - FL070 when atmospheric pressure is less than 722mm mercury column.

- WARNING:**  
 1. Traffic circuit width is 15km for simultaneous flights in area NR2 (over LMM).  
 2. Out-of-sequence approach shall be carried out according to the rectangular approach pattern 8km wide or from base turn on outbound track descending and establishing on landing track.

BEARINGS AND TRACKS ARE MAGNETIC  
 ALTITUDES, HEIGHTS AND ELEVATIONS ARE IN METRES  
 DISTANCES ARE IN KILOMETRES

CHANGE: VORDME, STAR GIMUN 2A