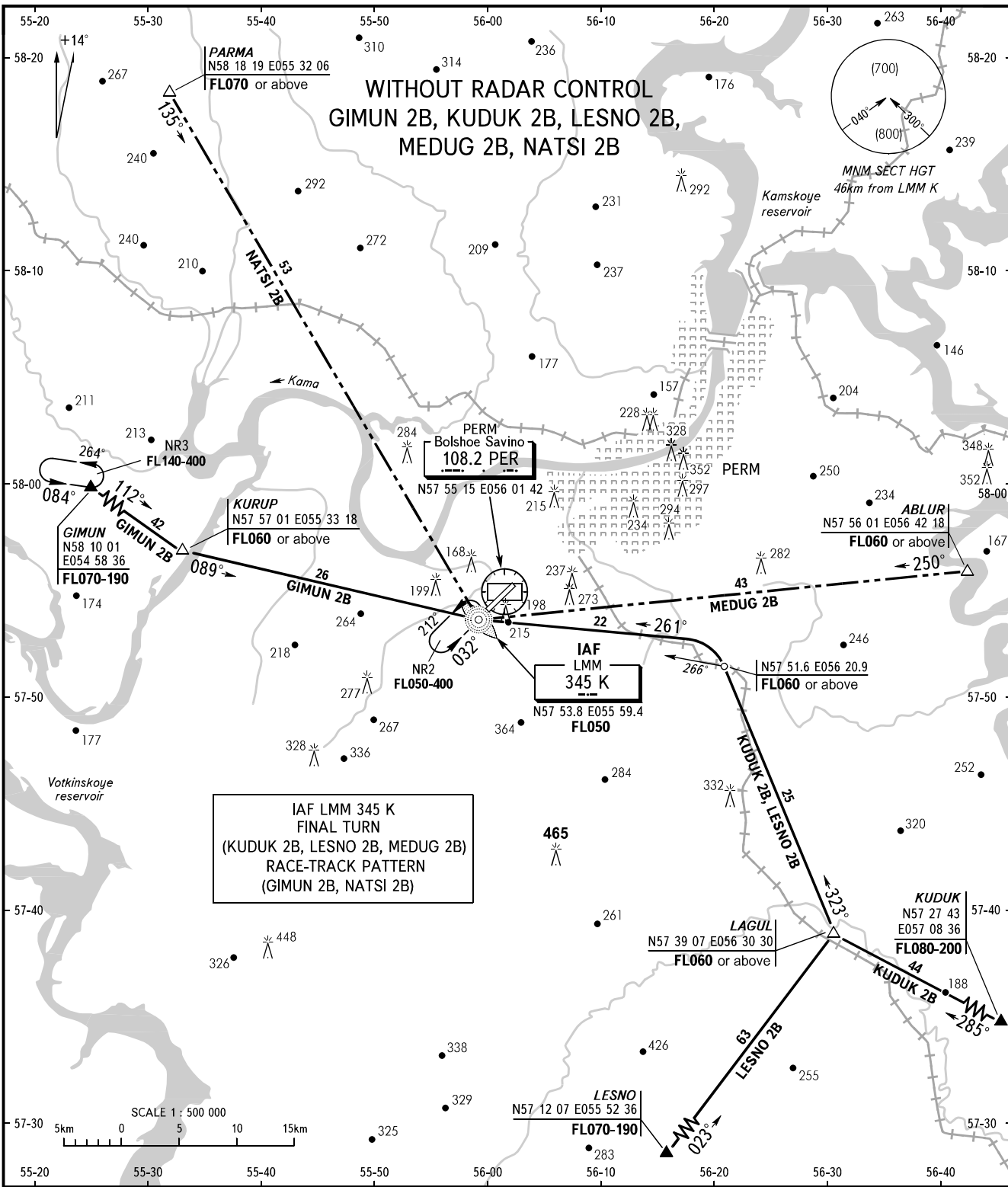


STANDARD ARRIVAL CHART
INSTRUMENT (STAR) - ICAO

PERM, RUSSIA
BOLSHOE SAVINO
RWY 03

TRANSITION
LEVEL: **1**



IAF LMM 345 K
FINAL TURN
(KUDUK 2B, LESNO 2B, MEDUG 2B)
RACE-TRACK PATTERN
(GIMUN 2B, NATSI 2B)

APPROACH (Additionally serves as RADAR) **127.1**
START (Additionally serves as TOWER and TAXIING) **124.0**

- 1** TRANSITION LEVEL:
- FL050 when atmospheric pressure is 749mm mercury column or above;
- FL060 when atmospheric pressure is less than 749mm and is 722mm or above;
- FL070 when atmospheric pressure is less than 722mm mercury column.

- WARNING:**
1. Traffic circuit width is 15km for simultaneous flights in area NR2 (over LMM).
2. Out-of-sequence approach shall be carried out according to the rectangular approach pattern 8km wide or from base turn on outbound track descending and establishing on landing track.

BEARINGS AND TRACKS ARE MAGNETIC
ALTITUDES, HEIGHTS AND ELEVATIONS ARE IN METRES
DISTANCES ARE IN KILOMETRES

CHANGE: VORDME, STAR GIMUN 2B