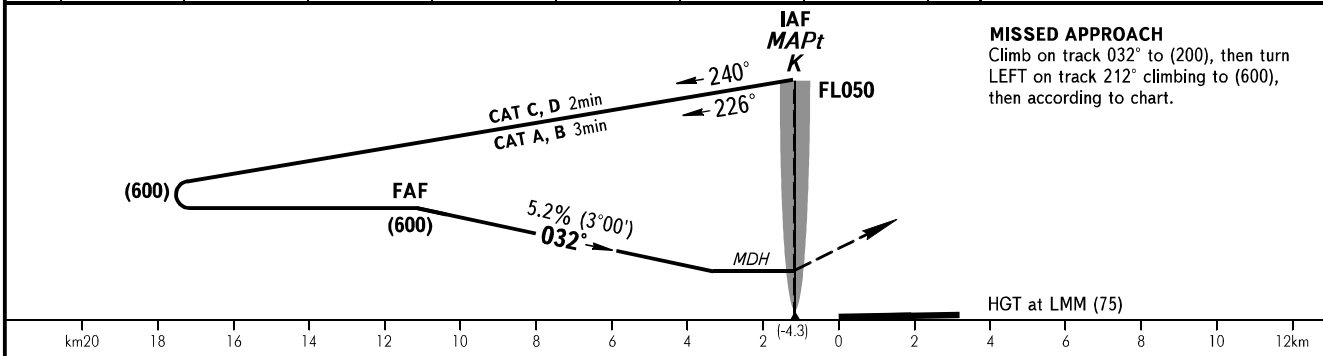
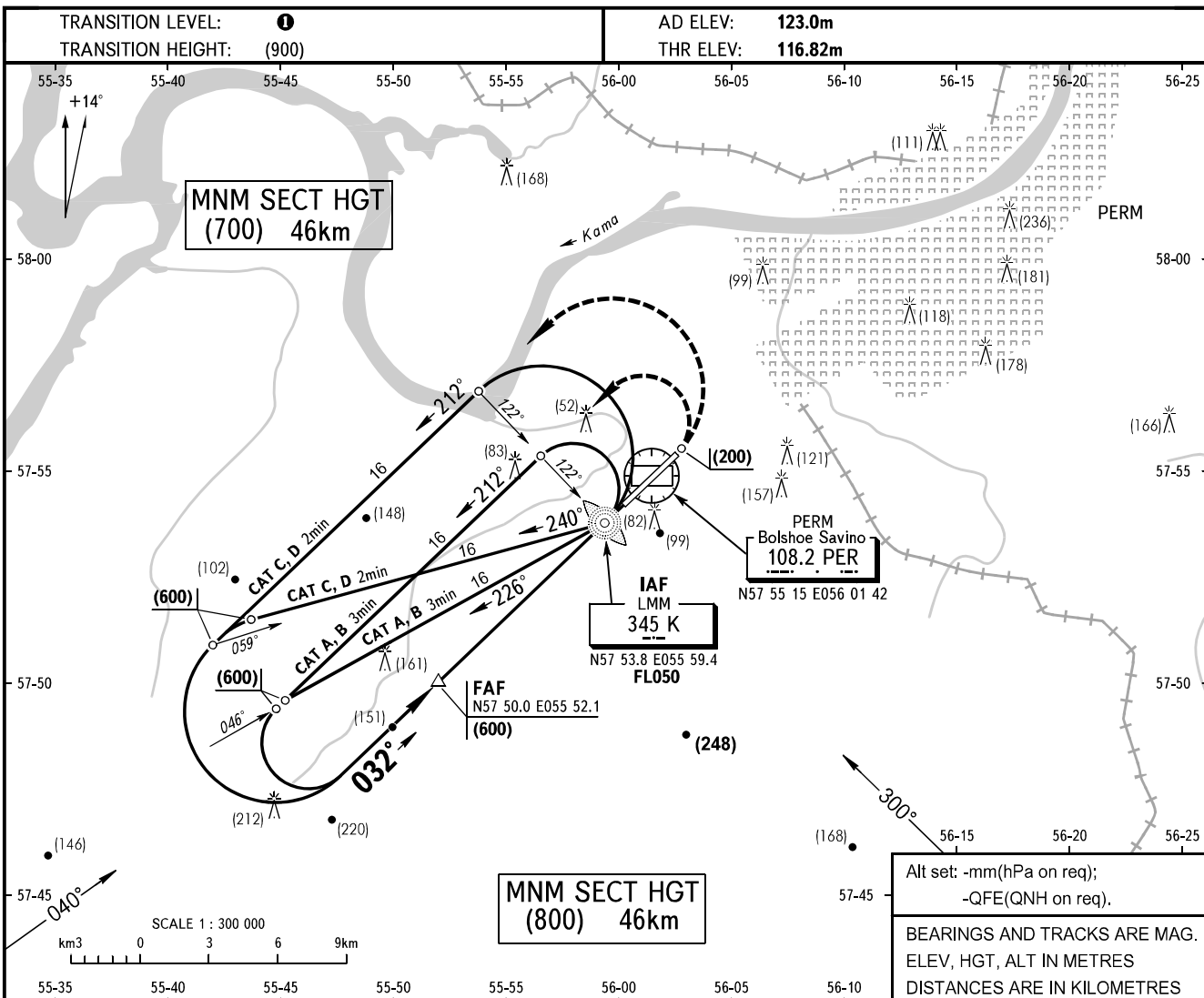


**INSTRUMENT
APPROACH
CHART - ICAO**

APPROACH (Additionally serves as RADAR) 127.1
START (Additionally serves as TOWER and TAXIING) 124.0

**PERM, RUSSIA
BOLSHOE SAVINO
NDB RWY 03**



OCA/H		A	B	C	D
Straight-in					
	Approach				
NDB	With FAF	306(189)	306(189)	306(189)	306(189)
	WO FAF	487(370)	487(370)	487(370)	487(370)

TRANSITION LEVEL:
- FL050 when atmospheric pressure is 749mm mercury column or above;
- FL060 when atmospheric pressure is less than 749mm and is 722mm or above;
- FL070 when atmospheric pressure is less than 722mm mercury column.

WARNING
FAF DIST is 13.9km by SRE.
Descending shall be carried out by controller's instruction.

GROUND SPEED	km/h	150	180	210	240	270	300	330	360	390	420	450
FAF-MAPt (LMM) 10000m	min:sec	4.00	3.20	2.51	2.30	2.13	2.00	1.49	1.39	1.32	1.26	1.20
RATE OF DESCENT	m/s	2.2	2.6	3.1	3.5	3.9	4.4	4.8	5.2	5.6	6.0	6.5

CHANGE: VORDME