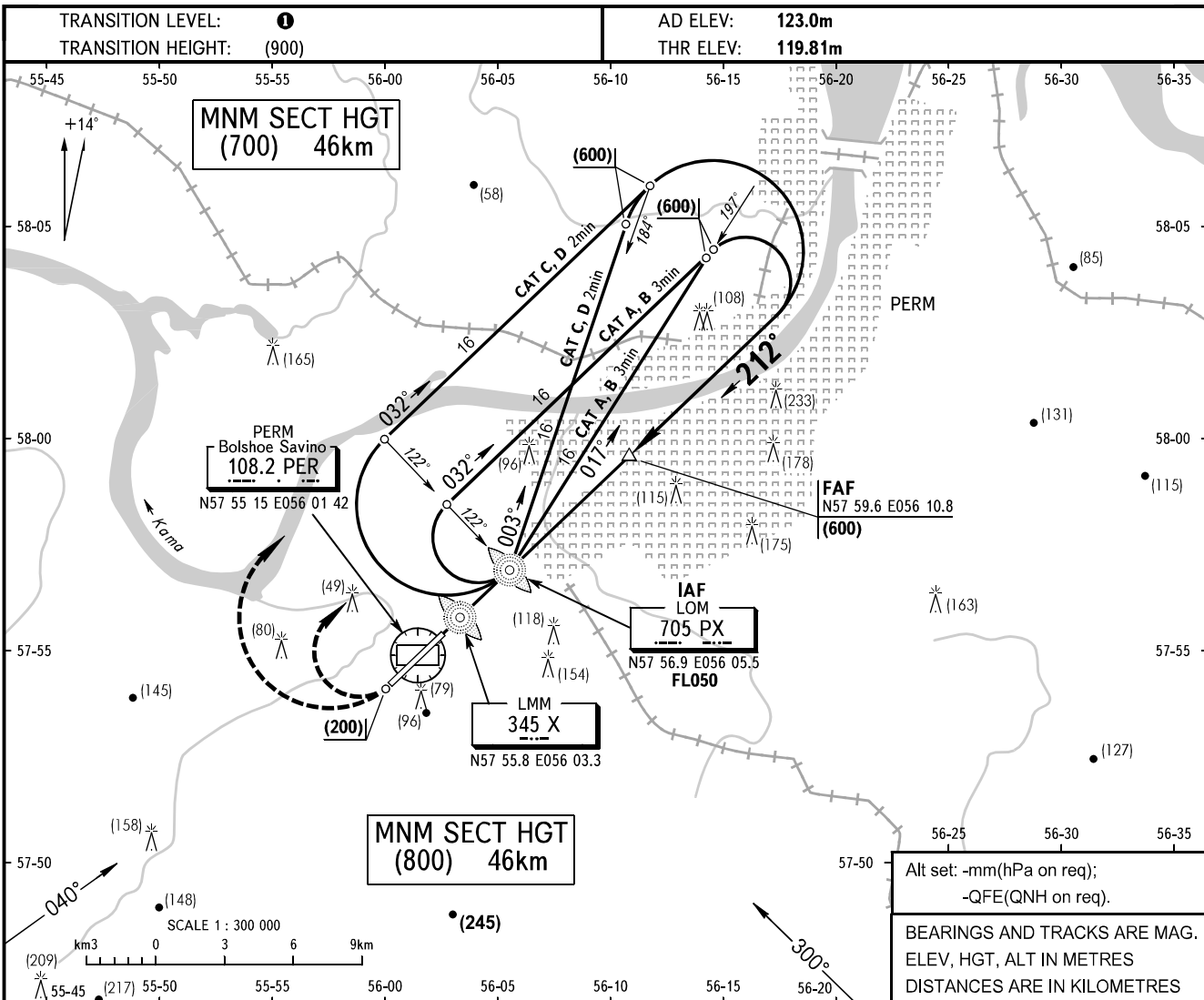


**INSTRUMENT  
APPROACH  
CHART - ICAO**

APPROACH (Additionally serves as RADAR) **127.1**  
START (Additionally serves as TOWER and TAXIING) **124.0**

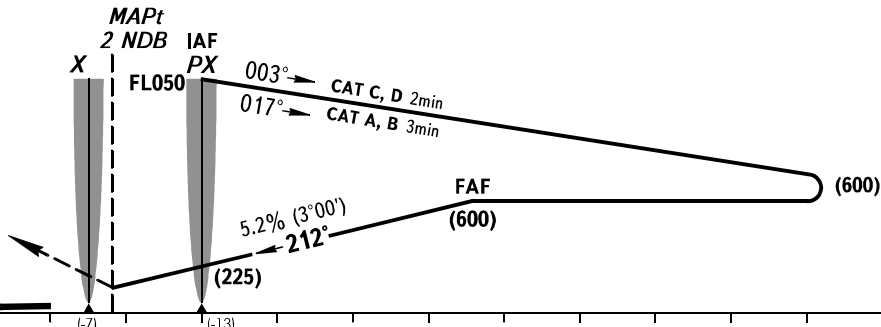
**PERM, RUSSIA**  
**BOLSHOE SAVINO**  
**2 NDB, NDB RWY 21**



Alt set: -mm(hPa on req);  
-QFE(QNH on req).  
BEARINGS AND TRACKS ARE MAG.  
ELEV, HGT, ALT IN METRES  
DISTANCES ARE IN KILOMETRES

**MISSED APPROACH**

Climb on track 212° to (200), then turn RIGHT on track 032° climbing to (600), then according to chart.



OCA/H		A	B	C	D
Straight-in	<b>2 NDB</b>	221(101)	221(101)	221(101)	221(101)
	<b>WO FAF</b>	502(382)	502(382)	502(382)	502(382)
Approach	<b>LOM</b>	220(100)	220(100)	220(100)	220(100)
	<b>LMM</b>	291(171)	291(171)	291(171)	291(171)

- 1** TRANSITION LEVEL:  
- FL050 when atmospheric pressure is 749mm mercury column or above;  
- FL060 when atmospheric pressure is less than 749mm and is 722mm or above;  
- FL070 when atmospheric pressure is less than 722mm mercury column.

**WARNING**  
FAF DIST is 11.8km by SRE.  
Descending shall be carried out by controller's instruction.

GROUND SPEED	km/h	150	180	210	240	270	300	330	360	390	420	450
LOM-THR 4010m	min:sec	1.36	1.20	1.09	1.00	0.53	0.48	0.44	0.40	0.37	0.34	0.32
RATE OF DESCENT	m/s	2.2	2.6	3.1	3.5	3.9	4.4	4.8	5.2	5.6	6.0	6.5

CHANGE: VORDME