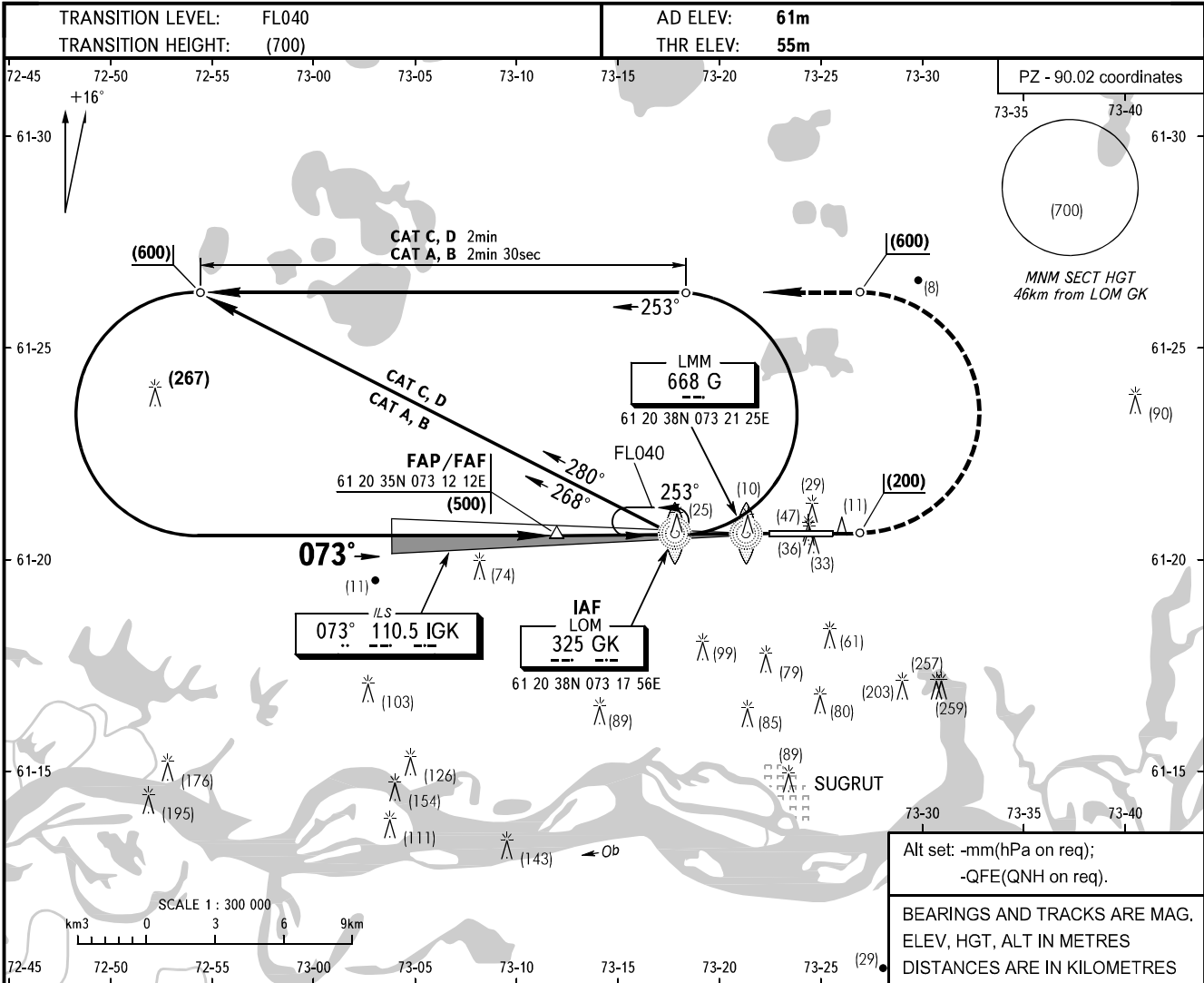


**INSTRUMENT
APPROACH
CHART - ICAO**

APPROACH	129.300
KRUG	120.300
TOWER	120.800

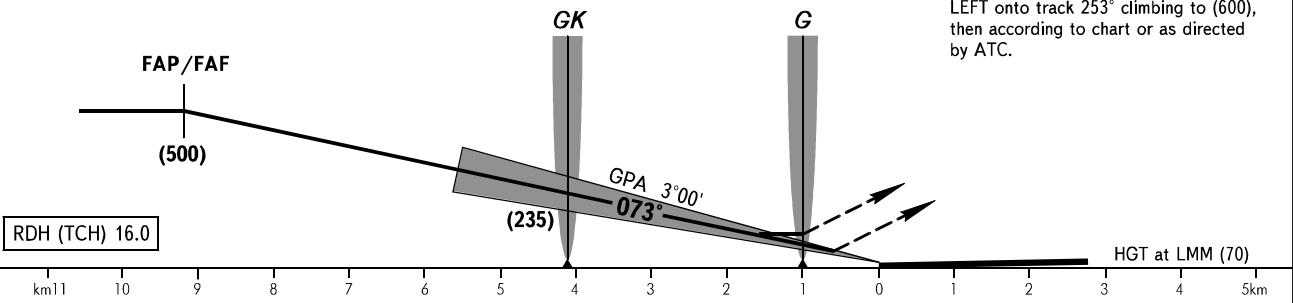
SURGUT, RUSSIA
SURGUT
ILS, LOC RWY 07



Allt set: -mm(hPa on req);
-QFE(QNH on req).
BEARINGS AND TRACKS ARE MAG.
ELEV, HGT, ALT IN METRES
DISTANCES ARE IN KILOMETRES

For LOC approach FAF is AZM 252° MAG
DIST 10.9 from TAR (61 20.8N 073 24.6E).

MISSED APPROACH
Climb on track 073° to (200), then turn LEFT onto track 253° climbing to (600), then according to chart or as directed by ATC.



OCA/H		A	B	C	D	WARNING LOM is at 51m left of RCL.
Straight-in	CAT I	97(42)	100(45)	103(48)	107(52)	
	LOC with FAF	155(100)	155(100)	155(100)	155(100)	
Approach						

GROUND SPEED	km/h	120	150	180	210	240	270	300	330	360	390	420
LOM-THR 4130m	min:sec	2.04	1.39	1.23	1.11	1.02	0.55	0.50	0.45	0.41	0.38	0.35
RATE OF DESCENT (Grad 5.2%)	m/s	1.8	2.2	2.6	3.1	3.6	4.0	4.4	4.9	5.3	5.8	6.3