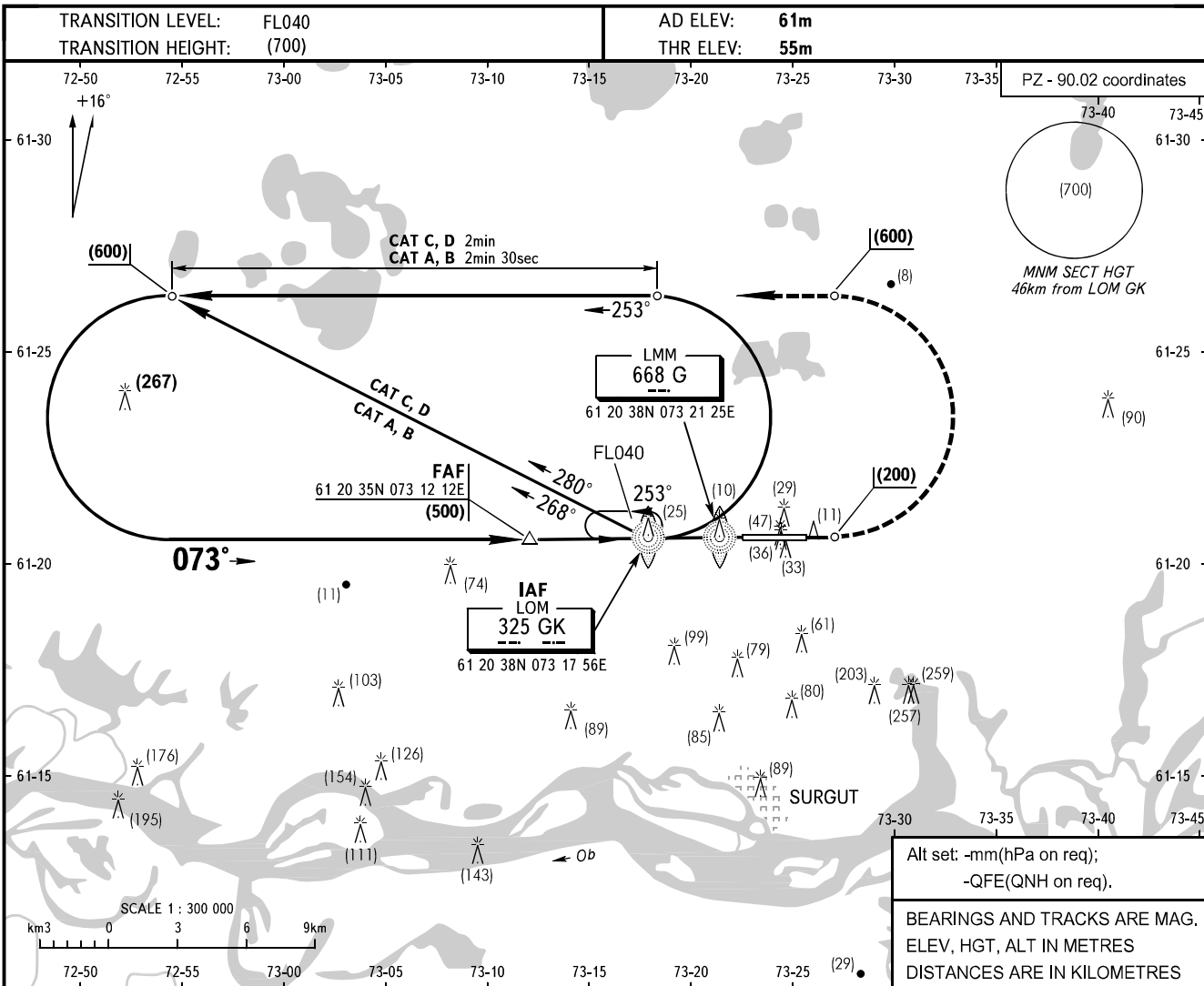


**INSTRUMENT
APPROACH
CHART - ICAO**

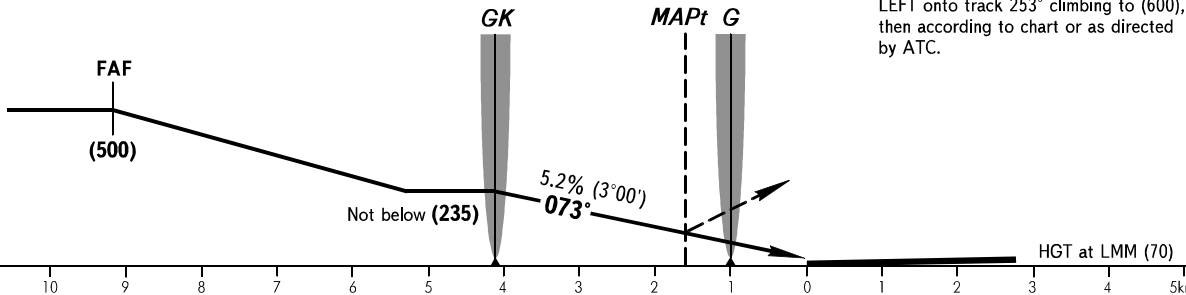
APPROACH	129.300
KRUG	120.300
TOWER	120.800

SURGUT, RUSSIA
SURGUT
2 NDB RWY 07



For 2 NDB, NDB approach FAF is AZM 252° MAG
DIST 10.9 from TAR (61 20.8N 073 24.6E).

MISSED APPROACH
Climb on track 073° to (200), then turn LEFT onto track 253° climbing to (600), then according to chart or as directed by ATC.



OCA/H		A	B	C	D	WARNING LOM is at 51m left of RCL.														
2 NDB		161(106)	161(106)	161(106)	161(106)															
Straight-in Approach																				
	GROUND SPEED	km/h	120	150	180	210	240	270	300	330	360	390	420							
	LOM-MAPt 2410m	min:sec	1.12	0.58	0.48	0.41	0.36	0.32	0.29	0.26	0.24	0.22	0.21							
RATE OF DESCENT	m/s	1.8	2.2	2.6	3.0	3.5	3.9	4.3	4.8	5.2	5.6	6.1								

CHANGE: Table data