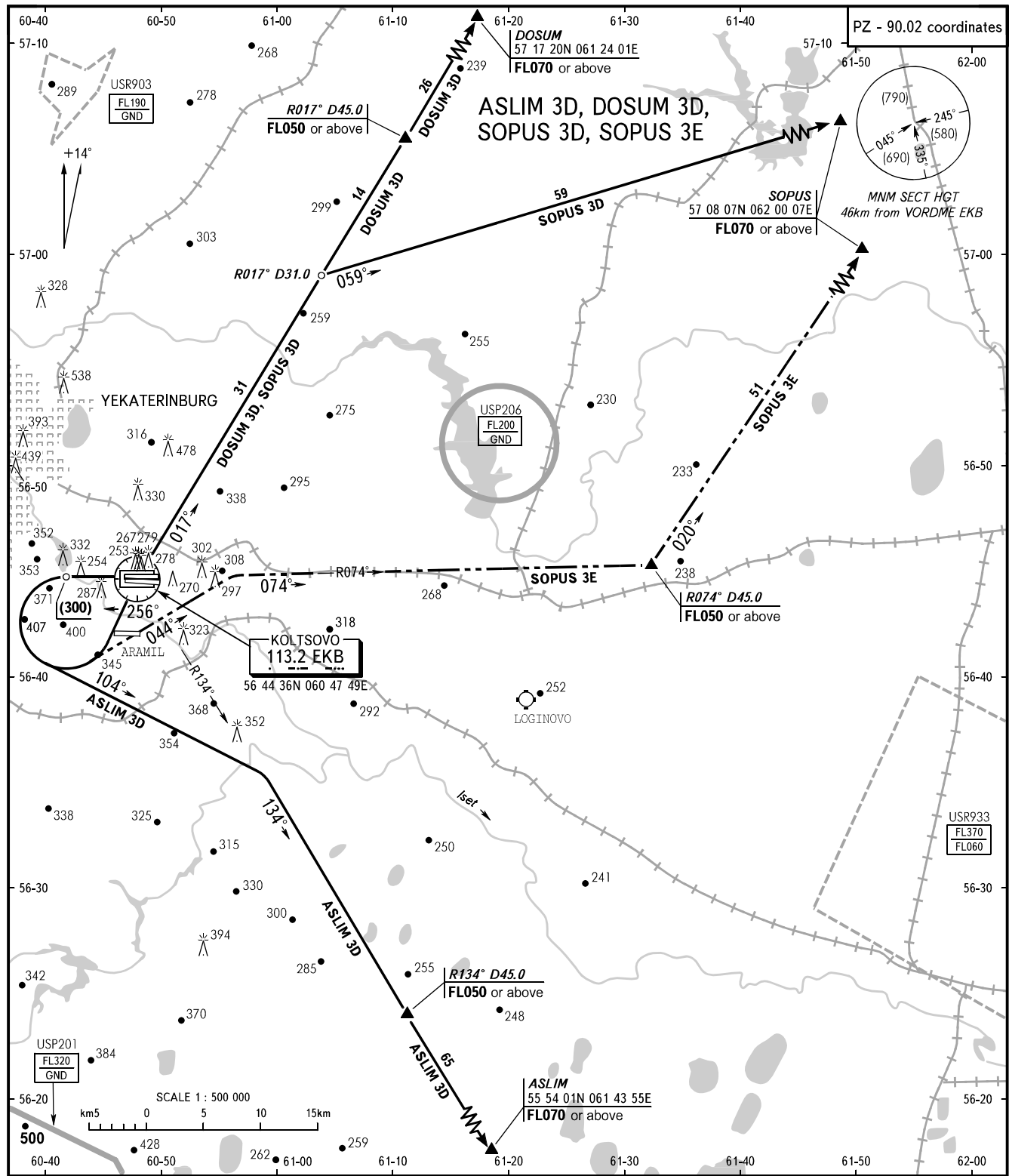


STANDARD DEPARTURE CHART
INSTRUMENT (SID) - ICAO

TRANSITION
HEIGHT : (900)

YEKATERINBURG, RUSSIA
KOLTSOVO
RWY 26R



TOWER	120.000
RADAR	118.700
APPROACH	125.900
CONTROL: Sector: URAL 1	122.200
URAL 3	127.300

WARNING
All ACFT shall take off using noise abatement procedures in accordance with the Aeroplane Flight Manual.

BEARINGS AND TRACKS ARE MAGNETIC
ALTITUDES, HEIGHTS AND ELEVATIONS ARE IN METRES
DISTANCES ARE IN KILOMETRES

CHANGE: TR 044°, 104° after (300)