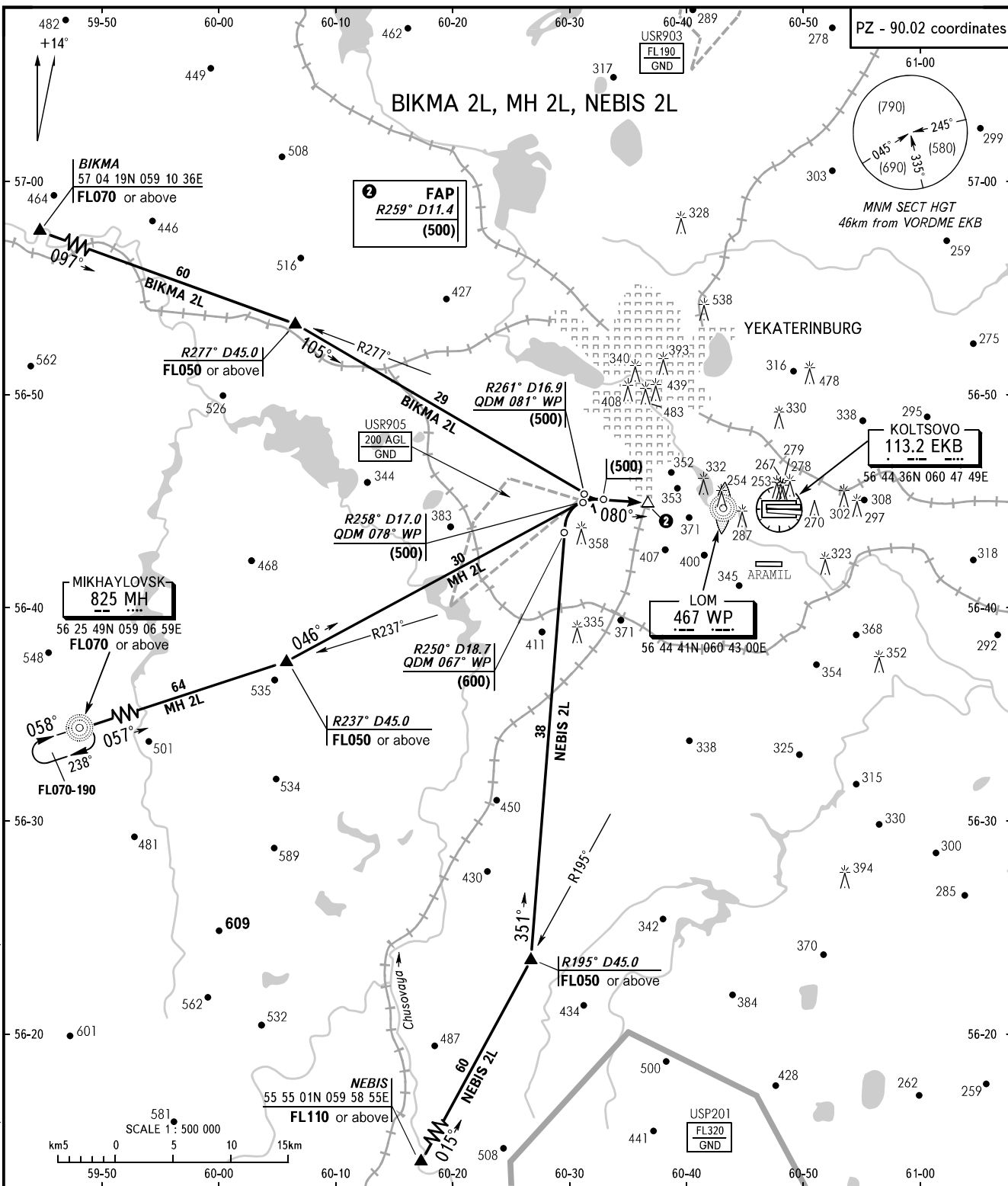


STANDARD ARRIVAL CHART  
INSTRUMENT (STAR) - ICAO

YEKATERINBURG, RUSSIA  
KOLTSOVO  
RWY 08R

TRANSITION  
LEVEL: ①

PZ - 90.02 coordinates



APPROACH	125.9
RADAR	118.7
TOWER	120.0

- ① TRANSITION LEVEL:  
 - FL050 when atmospheric pressure is 733mm mercury column or above;  
 - FL060 when atmospheric pressure is less than 733mm mercury column and is above 706mm mercury column.

BEARINGS AND TRACKS ARE MAGNETIC  
 ALTITUDES, HEIGHTS AND ELEVATIONS ARE IN METRES  
 DISTANCES ARE IN KILOMETRES

CHANGE: DIST BRG FM NDB MH, R FM EKB, BRG FM CRP R237 D45.0, R area