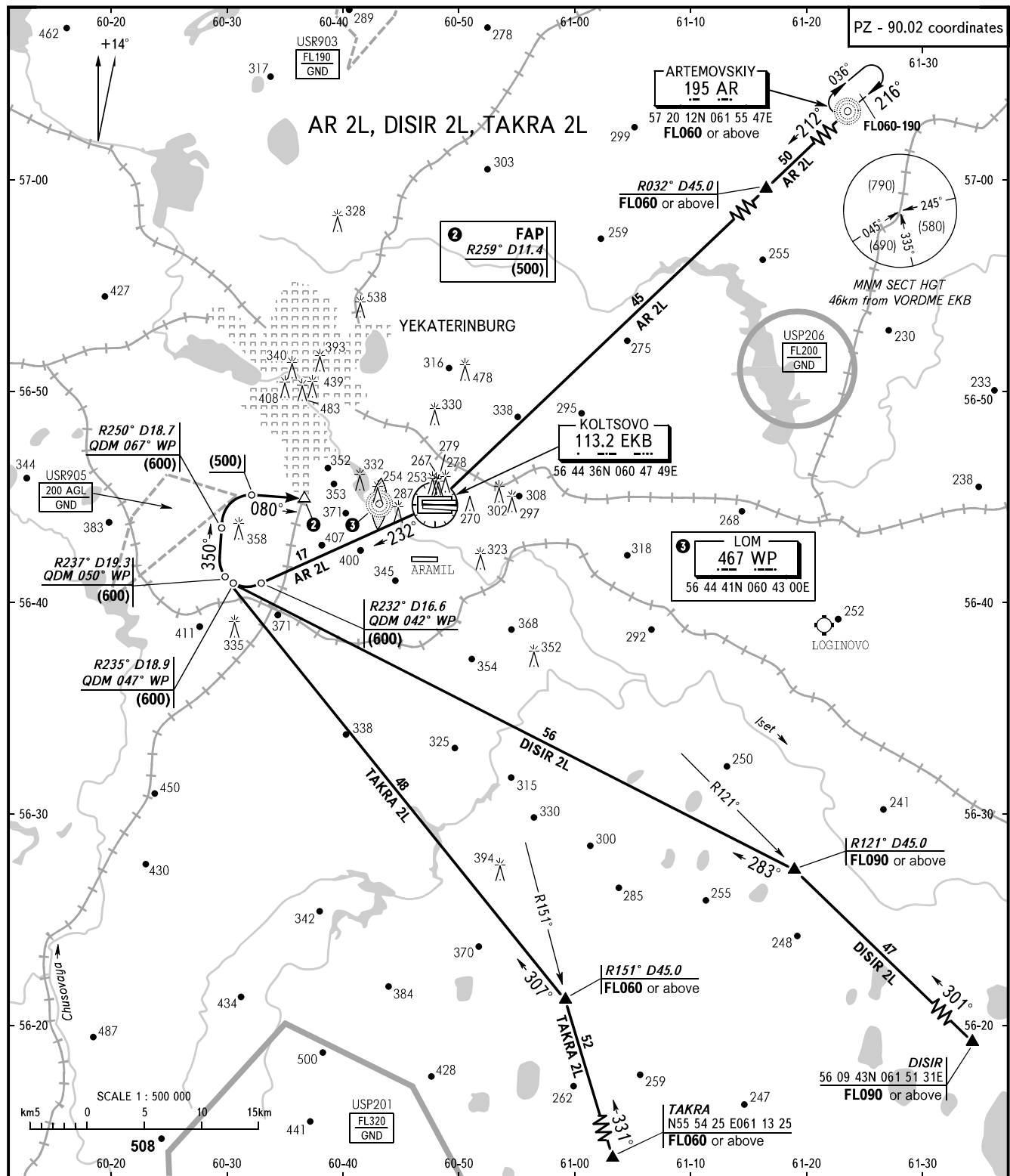


YEKATERINBURG, RUSSIA
KOLTSOVO
RWY 08R

STANDARD ARRIVAL CHART
INSTRUMENT (STAR) - ICAO

TRANSITION
LEVEL: **1**



APPROACH	125.9
RADAR	118.7
TOWER	120.0

- 1** TRANSITION LEVEL:
 - FL050 when atmospheric pressure is 733mm mercury column or above;
 - FL060 when atmospheric pressure is less than 733mm mercury column and is above 706mm mercury column.

WARNING
 Cross CRP R121° D45.0 below FL090 - by
 ATS unit clearance.

BEARINGS AND TRACKS ARE MAGNETIC
 ALTITUDES, HEIGHTS AND ELEVATIONS ARE IN METRES
 DISTANCES ARE IN KILOMETRES

CHANGE: DIST FM NDB AR, R areas