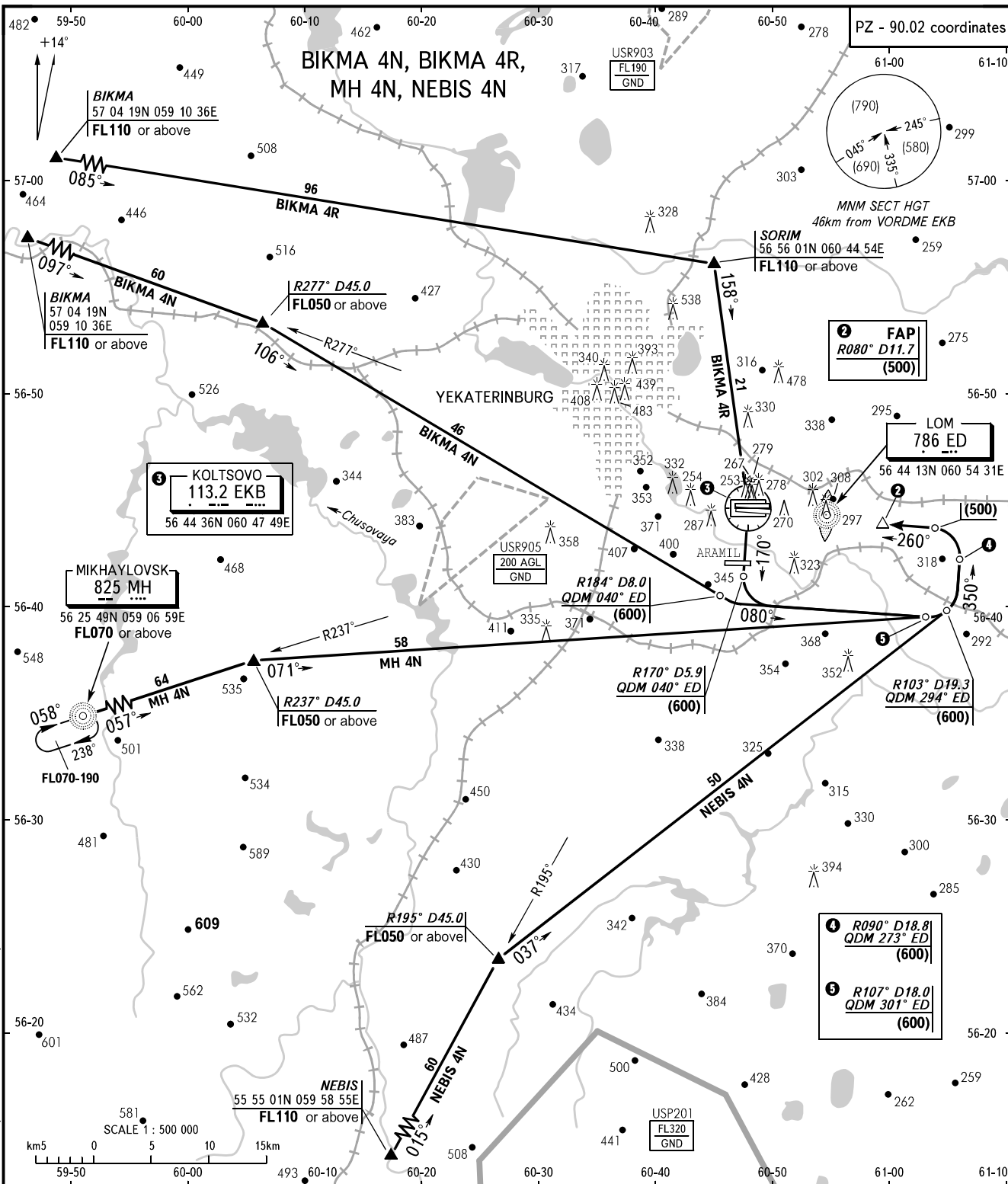


STANDARD ARRIVAL CHART
INSTRUMENT (STAR) - ICAO

YEKATERINBURG, RUSSIA
KOLTSOVO
RWY 26L

TRANSITION
LEVEL: 1

PZ - 90.02 coordinates



3 KOLTSOVO
113.2 EKB
56 44 36N 060 47 49E

MIKHAYLOVSK
825 MHH
56 25 49N 059 06 59E
FL070 or above

2 FAP
R080° D11.7
(500)

LOM
786 ED

USR905
200 AGL
GND

R184° D8.0
QDM 040° ED
(600)

R170° D5.9
QDM 040° ED
(600)

(500)

R103° D19.3
QDM 294° ED
(600)

4 R090° D18.8
QDM 273° ED
(600)

5 R107° D18.0
QDM 301° ED
(600)

NEBIS
55 55 01N 059 58 55E
FL110 or above

USP201
FL320
GND

SCALE 1: 500 000
0 5 10 15 km

APPROACH 125.9
RADAR 118.7
TOWER 120.0

1 TRANSITION LEVEL:
- FL050 when atmospheric pressure is 733mm mercury column or above;
- FL060 when atmospheric pressure is less than 733mm mercury column and is above 706mm mercury column.

BEARINGS AND TRACKS ARE MAGNETIC
ALTITUDES, HEIGHTS AND ELEVATIONS ARE IN METRES
DISTANCES ARE IN KILOMETRES

CHANGE: DIST BRG FM NDB MH, R FM EKB, BRG FM CRP R237 D45.0, R area