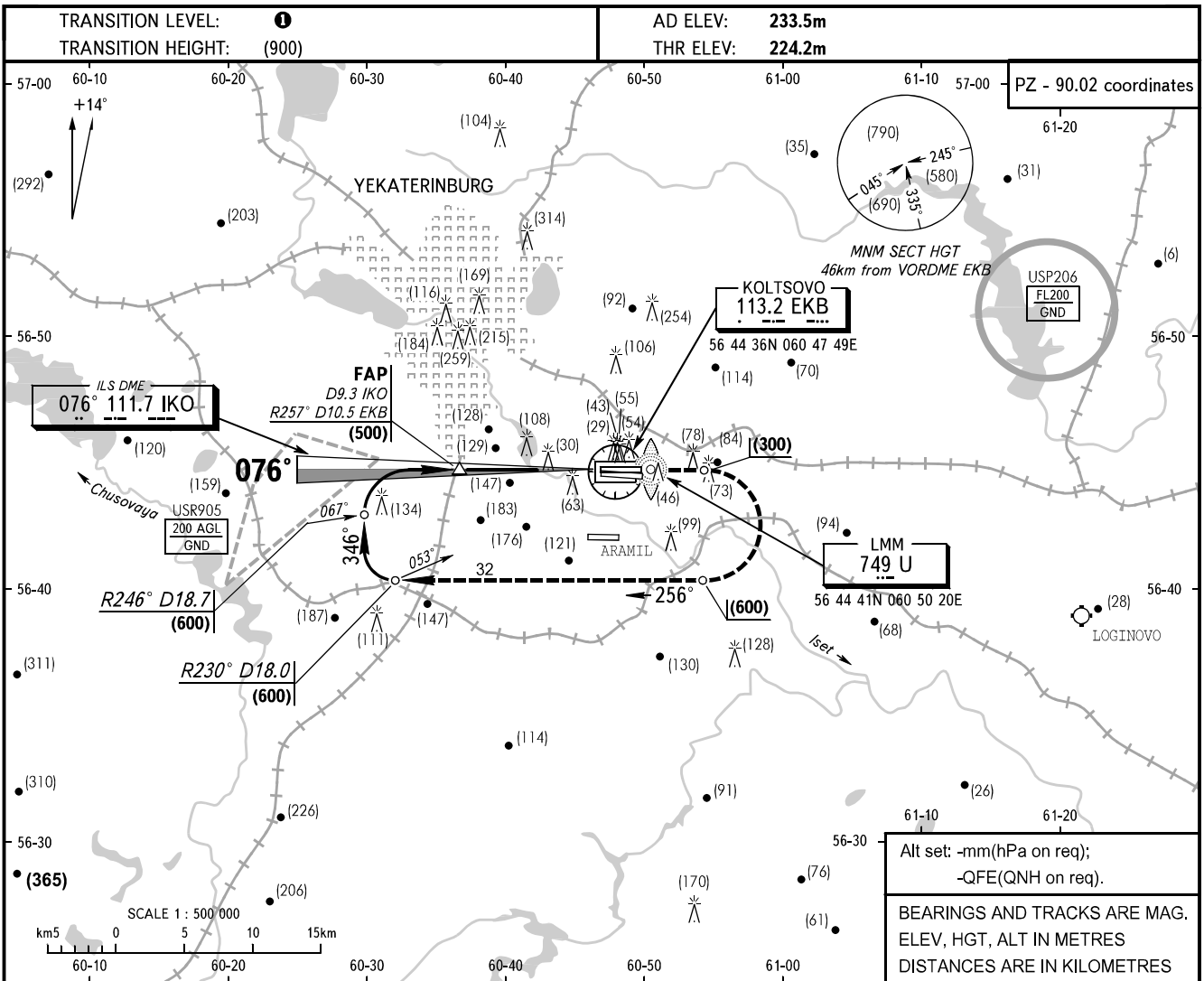


**INSTRUMENT
APPROACH
CHART - ICAO**

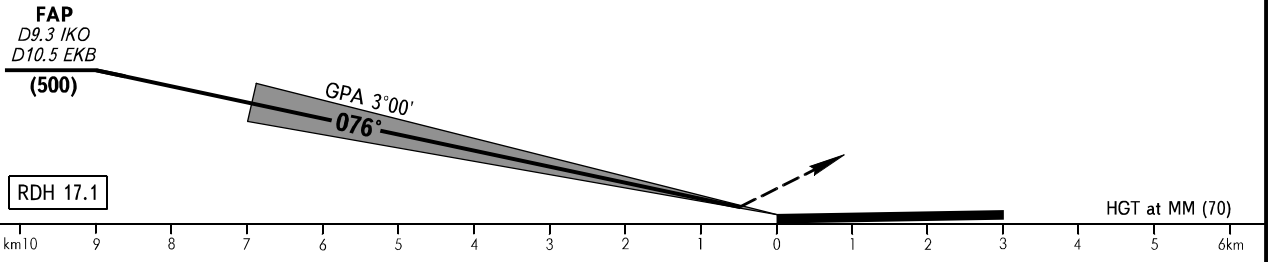
APPROACH	125.9
RADAR	118.7
TOWER	120.0

**YEKATERINBURG, RUSSIA
KOLTSOVO
ILS DME RWY 08L**



Alt set: -mm(hPa on req);
-QFE(QNH on req).
BEARINGS AND TRACKS ARE MAG.
ELEV, HGT, ALT IN METRES
DISTANCES ARE IN KILOMETRES

MISSED APPROACH
Climb on track 076° to (300), then
turn RIGHT on track 256° climbing
to (600), then according to chart.



OCA/H		A	B	C	D							
Straight-in Approach	ILS	266(42)	269(45)	272(48)	275(51)							
GROUND SPEED	km/h	150	180	210	240	270	300	330	360	390	420	450
OM-THR 3770m	min:sec	1.30	1.15	1.05	0.57	0.50	0.45	0.41	0.38	0.35	0.32	0.30
RATE OF DESCENT	m/s	2.2	2.6	3.0	3.5	3.9	4.3	4.8	5.2	5.6	6.1	6.5

1 TRANSITION LEVEL:
- FL050 when atmospheric pressure is 733mm mercury column or above;
- FL060 when atmospheric pressure is less than 733mm mercury column and is above 706mm mercury column.

CHANGE: New chart