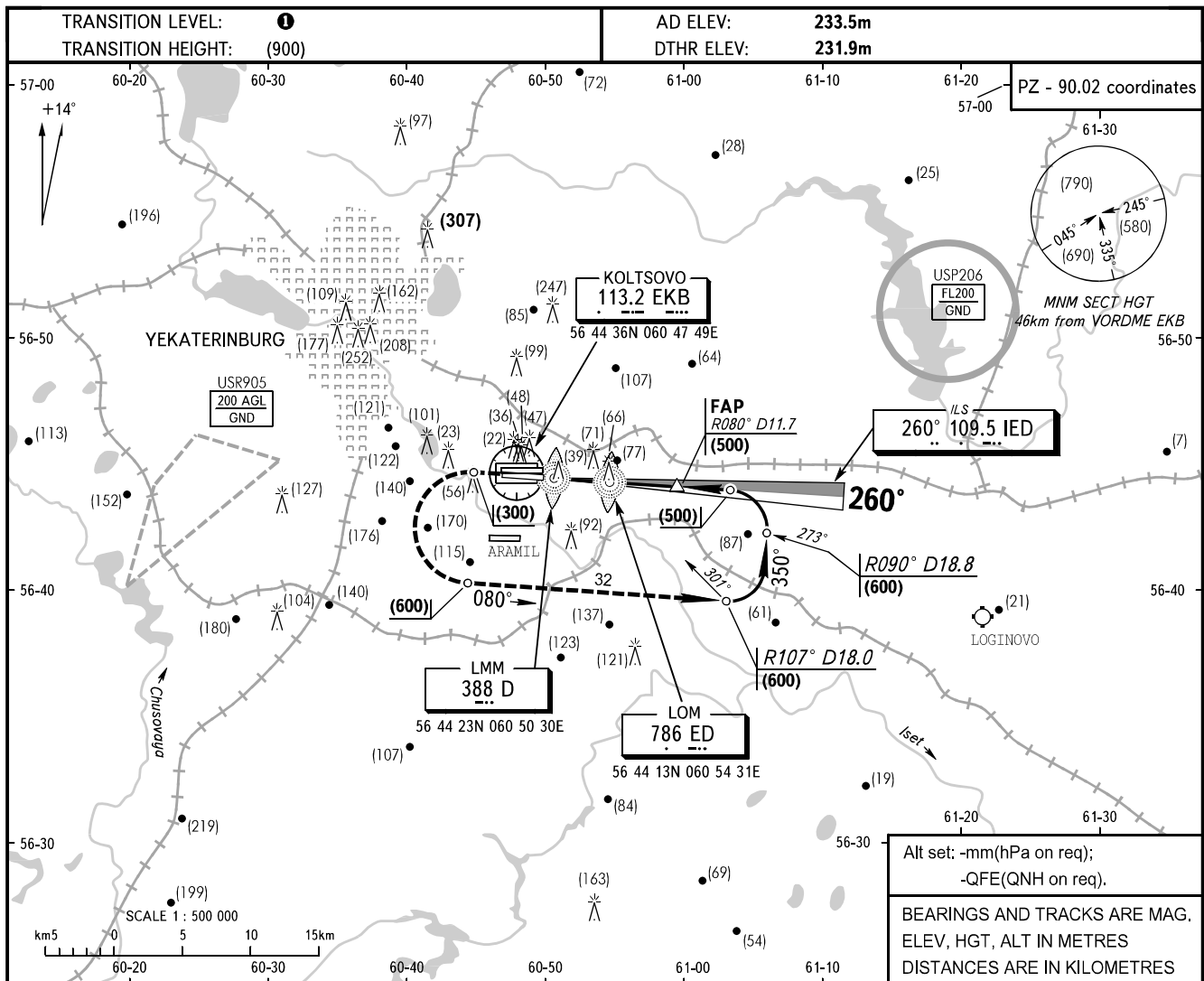


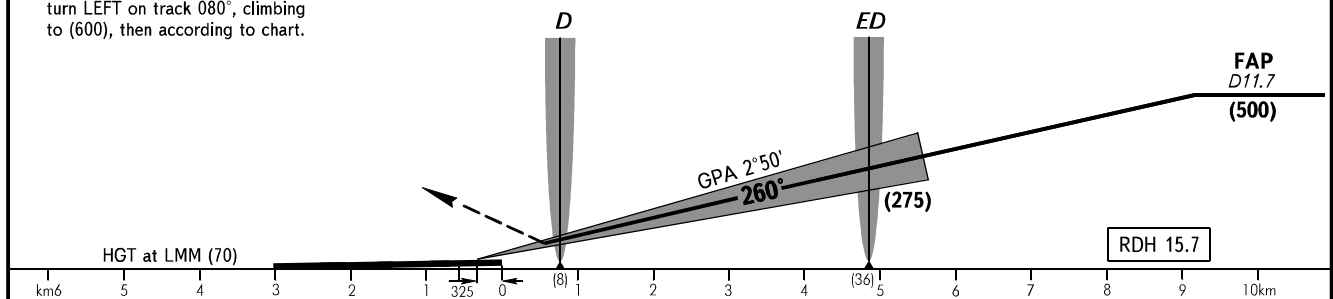
**INSTRUMENT  
APPROACH  
CHART - ICAO**

|          |              |
|----------|--------------|
| APPROACH | <b>125.9</b> |
| RADAR    | <b>118.7</b> |
| TOWER    | <b>120.0</b> |

**YEKATERINBURG, RUSSIA  
KOLTSOVO  
ILS RWY 26L**



**MISSED APPROACH**  
Climb on track 260° to (300), then turn LEFT on track 080°, climbing to (600), then according to chart.



| OCA/H           |            | A       | B       | C       | D       |      |      |      |      |      |      |      |      |
|-----------------|------------|---------|---------|---------|---------|------|------|------|------|------|------|------|------|
| Straight-in     | <b>ILS</b> | 276(44) | 278(46) | 281(49) | 285(53) |      |      |      |      |      |      |      |      |
|                 | Approach   |         |         |         |         |      |      |      |      |      |      |      |      |
| GROUND SPEED    |            | km/h    | 150     | 180     | 210     | 240  | 270  | 300  | 330  | 360  | 390  | 420  | 450  |
| LOM-THR 5190m   |            | min:sec | 2.05    | 1.44    | 1.29    | 1.18 | 1.09 | 1.02 | 0.57 | 0.52 | 0.48 | 0.45 | 0.42 |
| RATE OF DESCENT |            | m/s     | 2.0     | 2.5     | 2.9     | 3.3  | 3.7  | 4.1  | 4.5  | 4.9  | 5.3  | 5.7  | 6.1  |

**① TRANSITION LEVEL:**  
- FL050 when atmospheric pressure is 733mm mercury column or above;  
- FL060 when atmospheric pressure is less than 733mm mercury column and is above 706mm mercury column.

**WARNING**  
Distance and crossing height of LOM and LMM are given in reference to displaced THR, THR is displaced by 325m towards ARP. RWY length 2701m is available for landing.

CHANGE: New chart