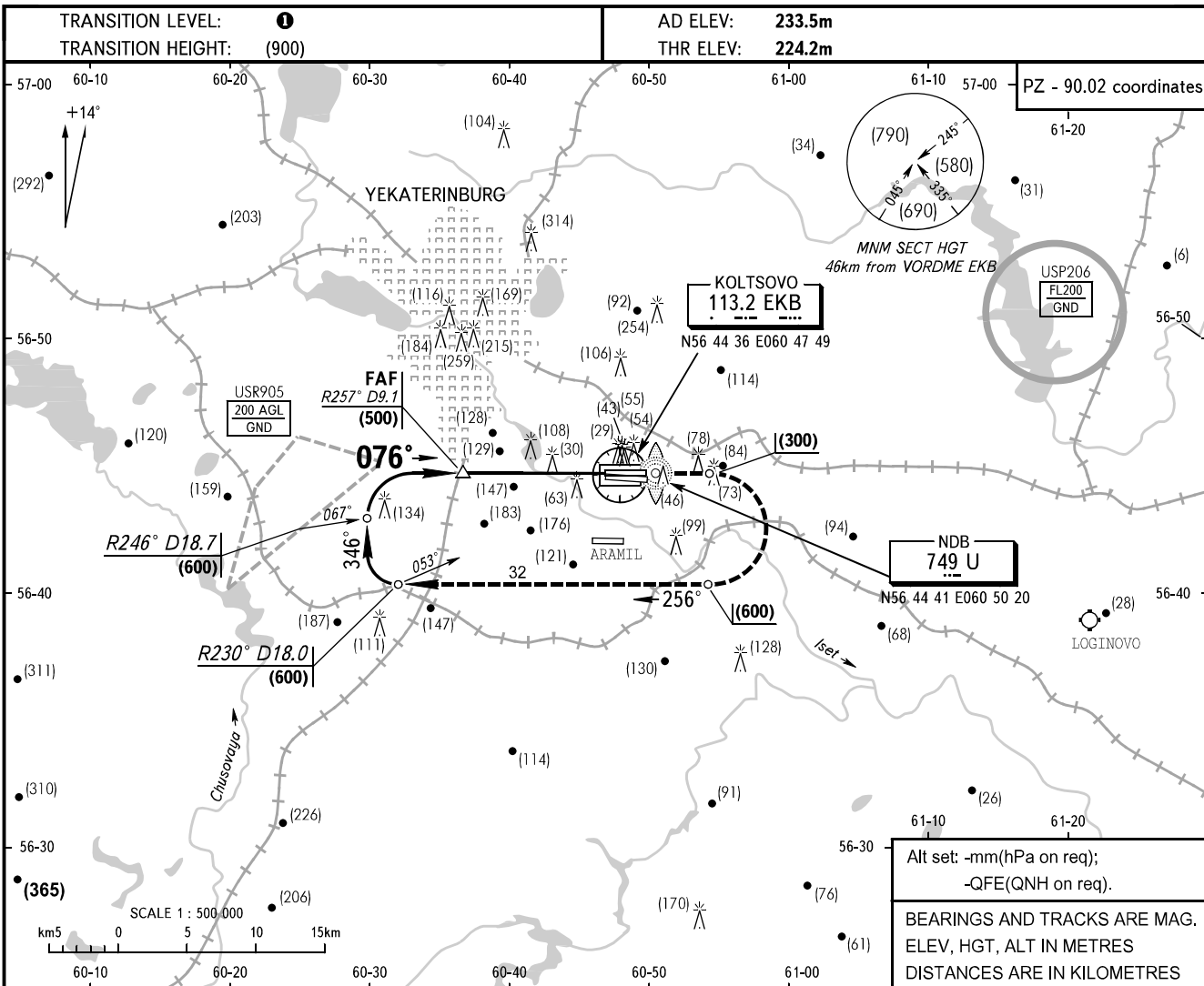


**INSTRUMENT  
APPROACH  
CHART - ICAO**

APPROACH	<b>125.9</b>
RADAR	<b>118.7</b>
TOWER	<b>120.0</b>

**YEKATERINBURG, RUSSIA  
KOLTSOVO  
NDB RWY 08L**



OCA/H		A	B	C	D	1 TRANSITION LEVEL: - FL050 when atmospheric pressure is 733mm mercury column or above; - FL060 when atmospheric pressure is less than 733mm mercury column and is above 706mm mercury column.							
Straight-in	<b>NDB With FAF</b>	446(222)	446(222)	446(222)	446(222)	<b>WARNING:</b> 1. Descent shall be commenced by instruction of ATS unit. 2. For back course NDB approach FAF is AZM 257° DIST 9.5 from TAR (56 44 35N 060 48 11E).							
	<b>NDB WO FAF</b>	557(333)	557(333)	557(333)	557(333)								
Approach													
GROUND SPEED		km/h	150	180	210	240	270	300	330	360	390	420	450
RATE OF DESCENT		m/s	2.5	3.1	3.6	4.1	4.6	5.1	5.6	6.1	6.6	7.1	7.6

CHANGE: OCA/H, OM-THR