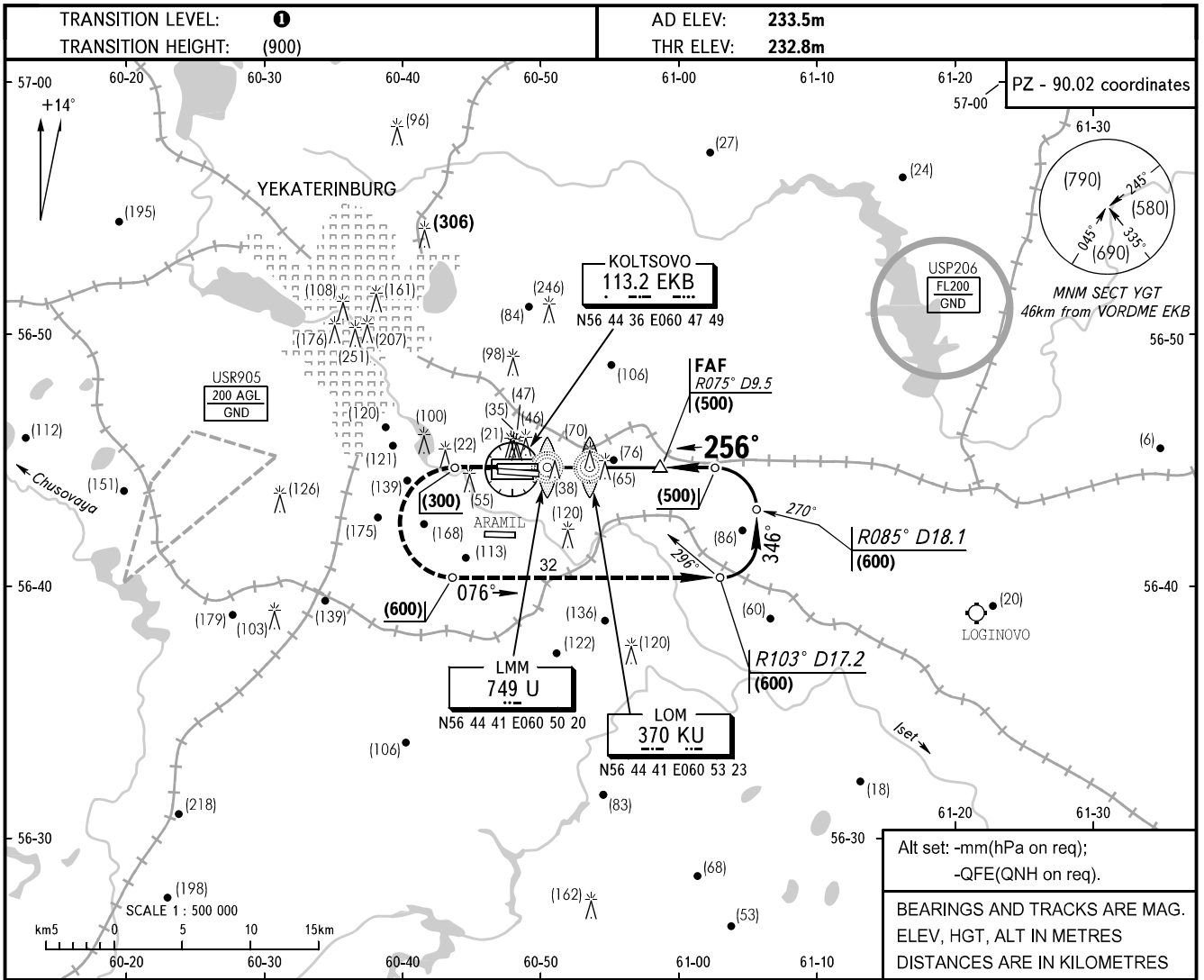


**INSTRUMENT
APPROACH
CHART - ICAO**

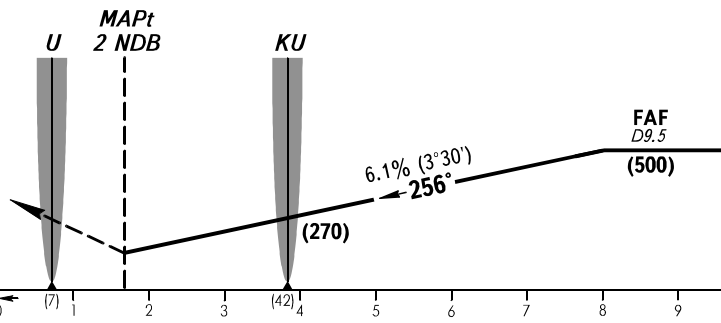
APPROACH	125.9
RADAR	118.7
TOWER	120.0

YEKATERINBURG, RUSSIA
KOLTSOVO
2 NDB RWY 26R



Alt set: -mm(hPa on req);
-QFE(QNH on req).
BEARINGS AND TRACKS ARE MAG.
ELEV, HGT, ALT IN METRES
DISTANCES ARE IN KILOMETRES

MISSED APPROACH
Climb on track 256° to (300), then turn LEFT on track 076°, climbing to (600), then according to chart.



OCA/H		A	B	C	D
Straight-in	2 NDB	371(138)	371(138)	371(138)	371(138)
	Approach				

1 TRANSITION LEVEL:
- FL050 when atmospheric pressure is 733mm mercury column or above;
- FL060 when atmospheric pressure is less than 733mm mercury column and is above 706mm mercury column.
WARNING
Distance and crossing height of LOM and LMM are given in reference to displaced THR. THR is displaced by 250m towards ARP. RWY length 2754m is available for landing.

GROUND SPEED	km/h	150	180	210	240	270	300	330	360	390	420	450
LOM-THR 4080m	min:sec	1.38	1.22	1.10	1.01	0.54	0.49	0.45	0.41	0.38	0.35	0.33
RATE OF DESCENT	m/s	2.5	3.1	3.6	4.1	4.6	5.1	5.6	6.1	6.6	7.1	7.6