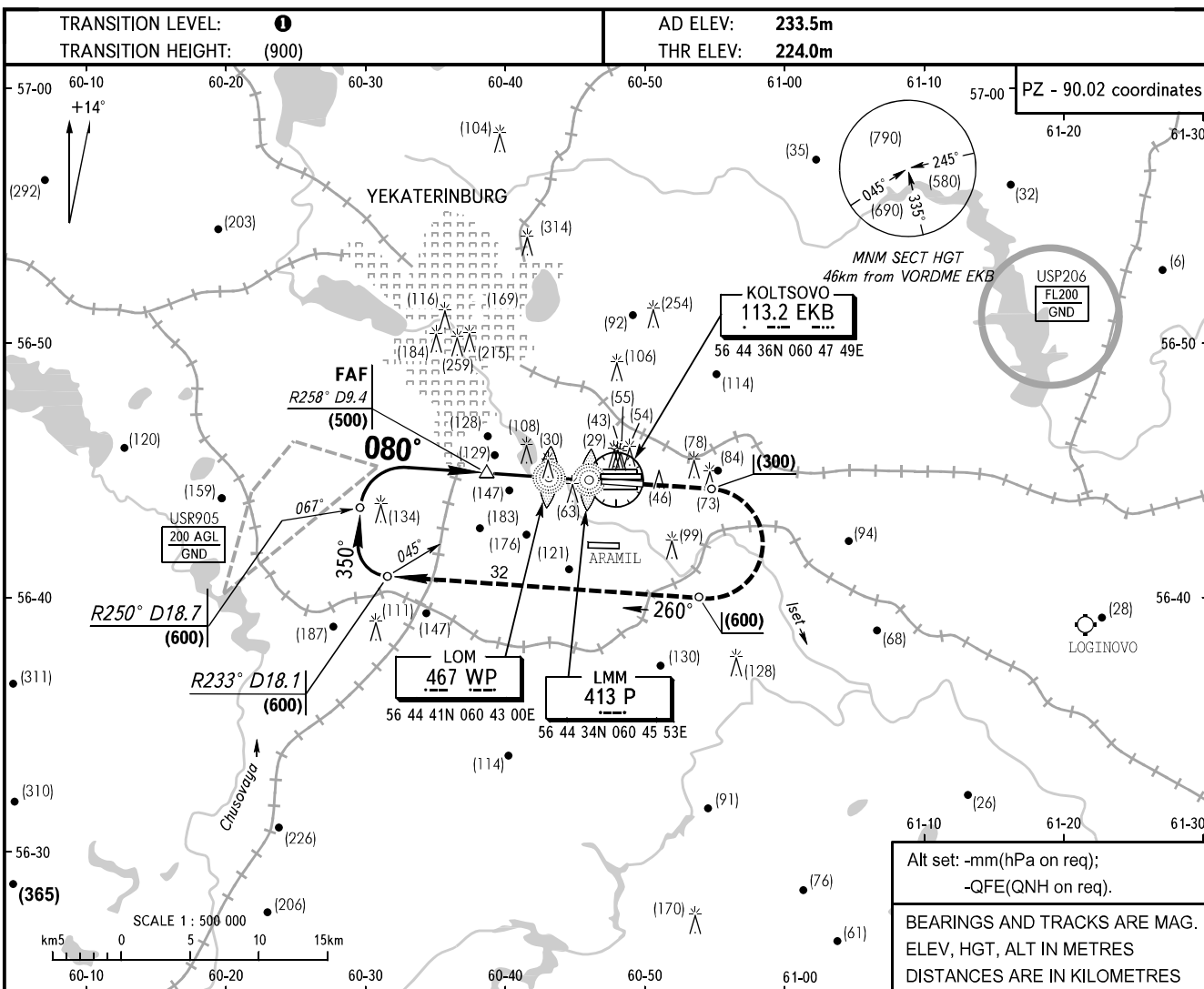


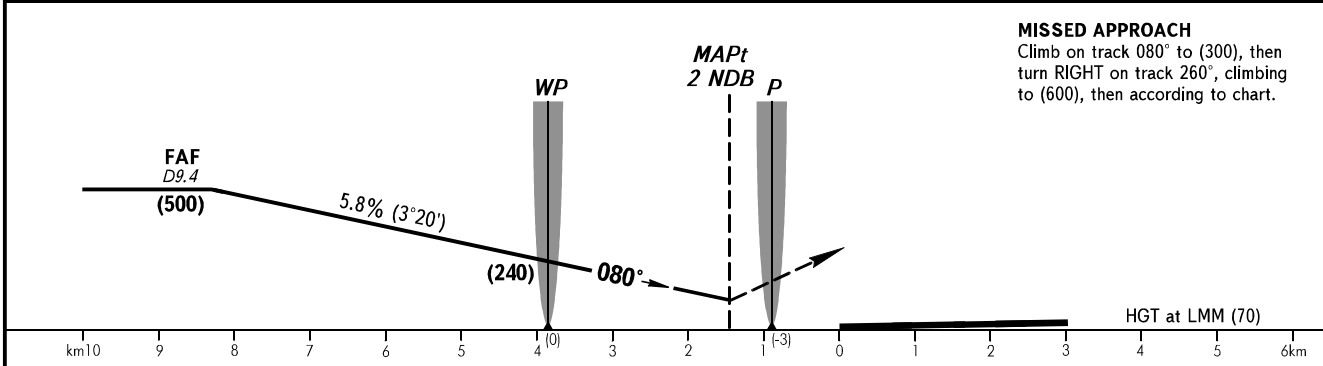
**INSTRUMENT
APPROACH
CHART - ICAO**

APPROACH	125.9
RADAR	118.7
TOWER	120.0

**YEKATERINBURG, RUSSIA
KOLTSOVO
2 NDB RWY 08R**



Alt set: -mm(hPa on req);
-QFE(QNH on req).
BEARINGS AND TRACKS ARE MAG.
ELEV, HGT, ALT IN METRES
DISTANCES ARE IN KILOMETRES



MISSED APPROACH
Climb on track 080° to (300), then turn RIGHT on track 260°, climbing to (600), then according to chart.

OCA/H		A	B	C	D							
Straight-in	2 NDB With FAF	325(101)	325(101)	325(101)	325(101)							
	2 NDB WO FAF	521(297)	521(297)	521(297)	521(297)							
Approach												
GROUND SPEED	km/h	150	180	210	240	270	300	330	360	390	420	450
LOM-THR 3850m	min:sec	1.32	1.17	1.06	0.58	0.51	0.46	0.42	0.39	0.36	0.33	0.31
RATE OF DESCENT	m/s	2.4	2.9	3.4	3.9	4.4	4.8	5.3	5.8	6.3	6.8	7.3

1 TRANSITION LEVEL:
- FL050 when atmospheric pressure is 733mm mercury column or above;
- FL060 when atmospheric pressure is less than 733mm mercury column and is above 706mm mercury column.
WARNING:
1. Descent shall be commenced by instruction of ATS unit.
2. For 2 NDB approach FAF is AZM 259° DIST 9.7 from TAR (N56 44 35 E060 48 11).

CHANGE: New chart