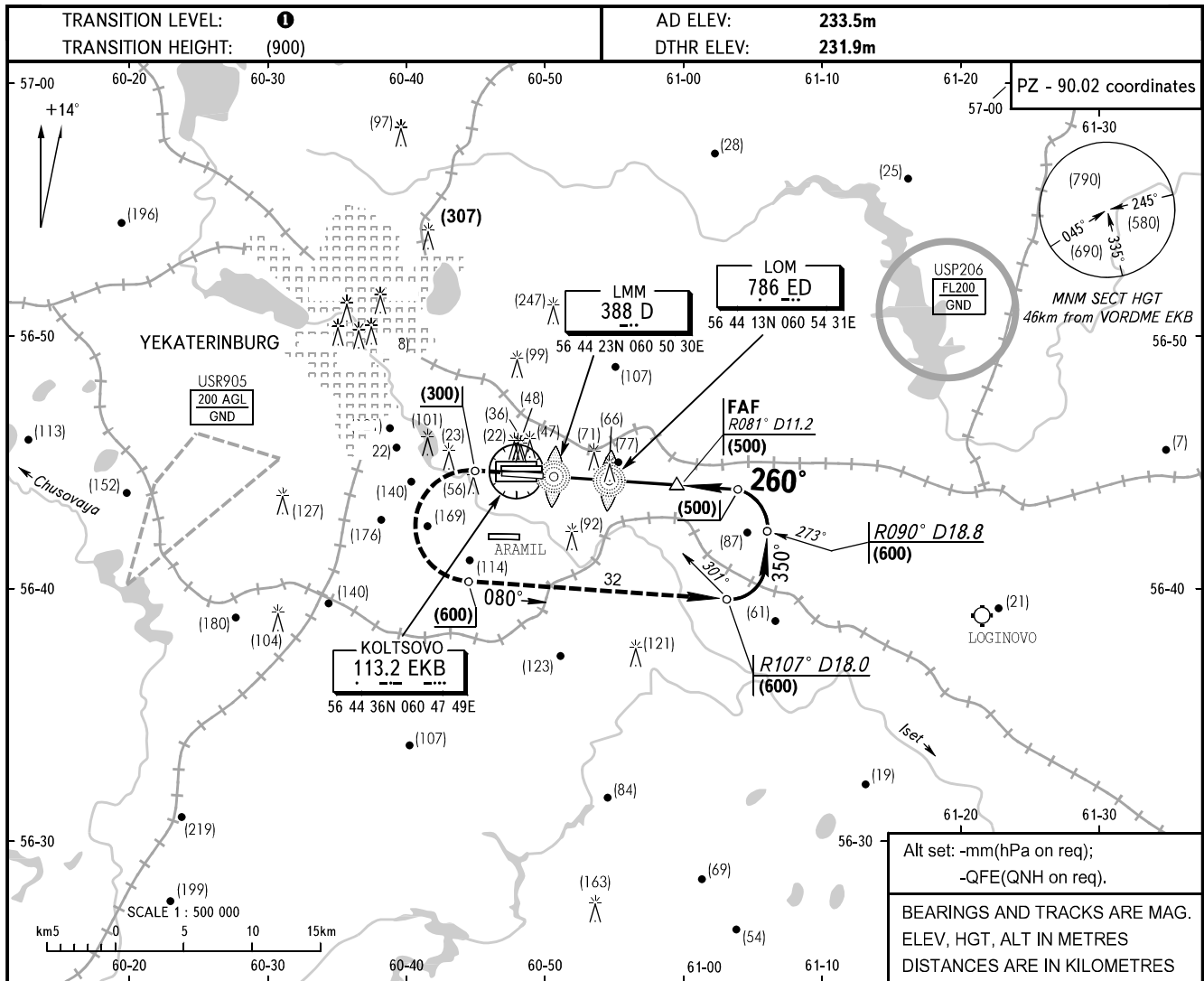


INSTRUMENT
APPROACH
CHART - ICAO

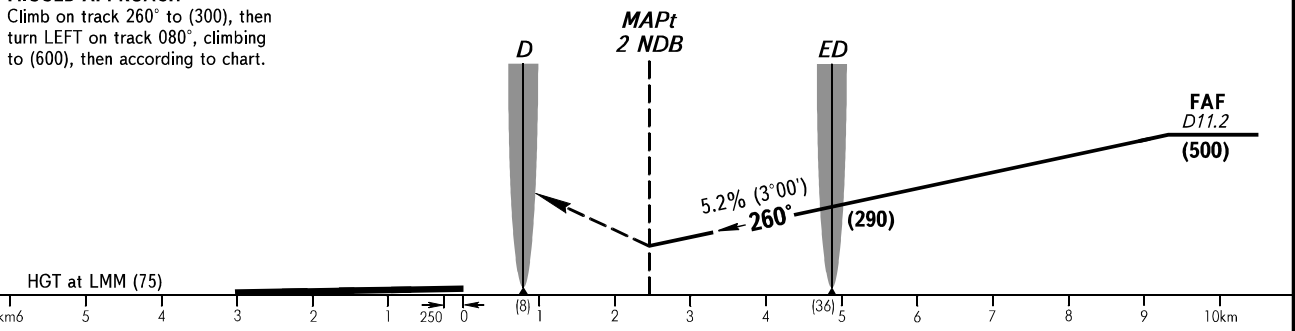
APPROACH	125.9
RADAR	118.7
TOWER	120.0

YEKATERINBURG, RUSSIA
KOLTSOVO
2 NDB RWY 26L



MISSED APPROACH

Climb on track 260° to (300), then turn LEFT on track 080°, climbing to (600), then according to chart.



OCA/H		A	B	C	D								
Straight-in	2 NDB	376(144)	376(144)	376(144)	376(144)								
	Approach												
GROUND SPEED		km/h	150	180	210	240	270	300	330	360	390	420	450
LOM-THR 5190m		min:sec	2.05	1.44	1.29	1.18	1.09	1.02	0.57	0.52	0.48	0.45	0.42
RATE OF DESCENT		m/s	2.2	2.6	3.0	3.5	3.9	4.3	4.8	5.2	5.6	6.1	6.5

- 1 TRANSITION LEVEL:
- FL050 when atmospheric pressure is 733mm mercury column or above;
- FL060 when atmospheric pressure is less than 733mm mercury column and is above 706mm mercury column.

WARNING
Distance and crossing height of LOM and LMM are given in reference to displaced THR. THR is displaced by 325m towards ARP. RWY length 2701m is available for landing.