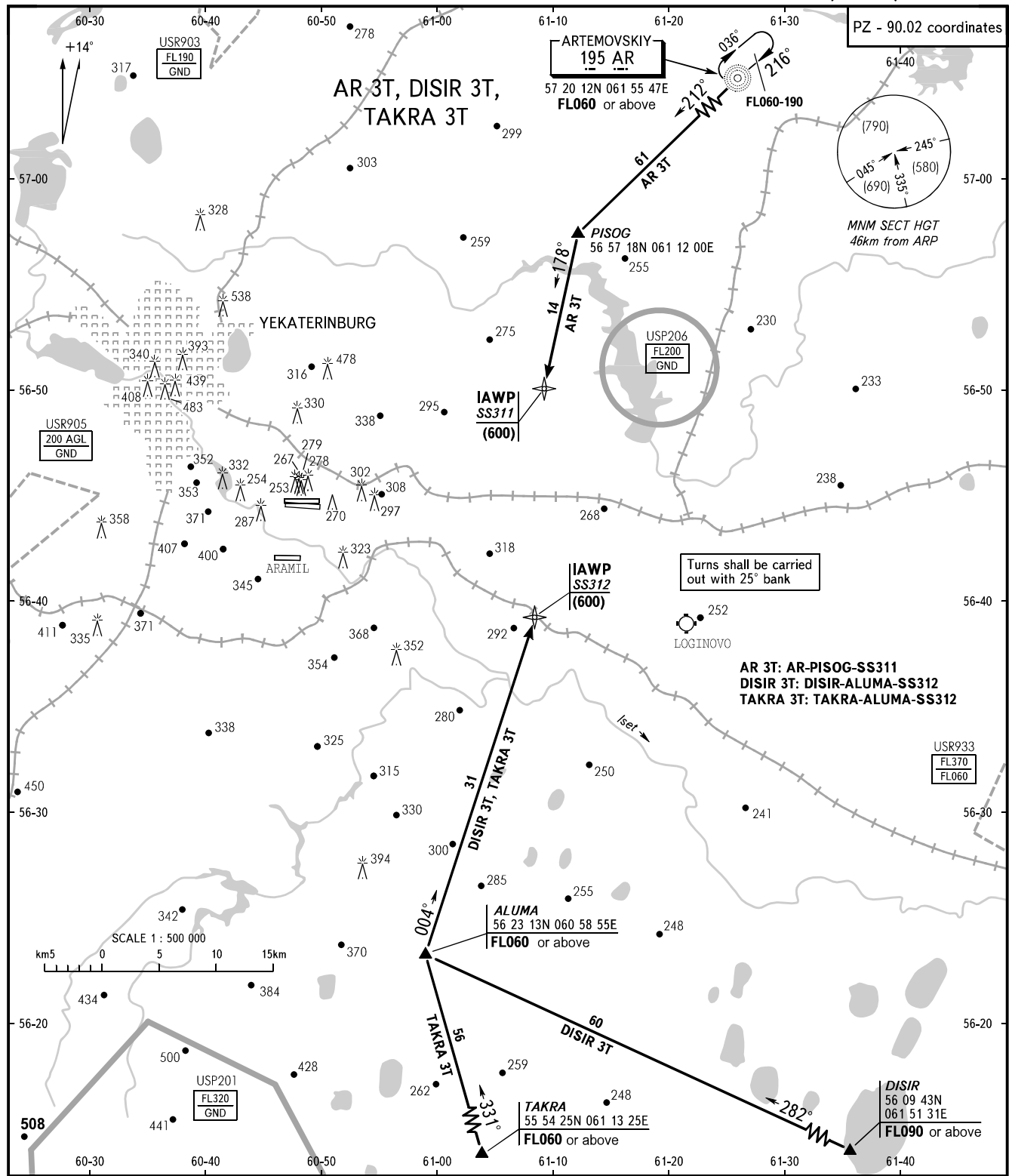


STANDARD ARRIVAL CHART
INSTRUMENT (STAR) - ICAO

YEKATERINBURG, RUSSIA
KOLTSOVO
RNAV (GNSS) RWY 26R

TRANSITION
LEVEL: 1



APPROACH	125.9	<p>1 TRANSITION LEVEL:</p> <ul style="list-style-type: none"> - FL050 when atmospheric pressure is 733mm mercury column or above; - FL060 when atmospheric pressure is less than 733mm mercury column and is above 706mm mercury column.
RADAR	118.7	
TOWER	120.0	

BEARINGS AND TRACKS ARE MAGNETIC
ALTITUDES, HEIGHTS AND ELEVATIONS ARE IN METRES
DISTANCES ARE IN KILOMETRES

AIRAC AMDT 13/12

Federal Air Transport Agency

CHANGE: DIST FM NDB AR, R areas