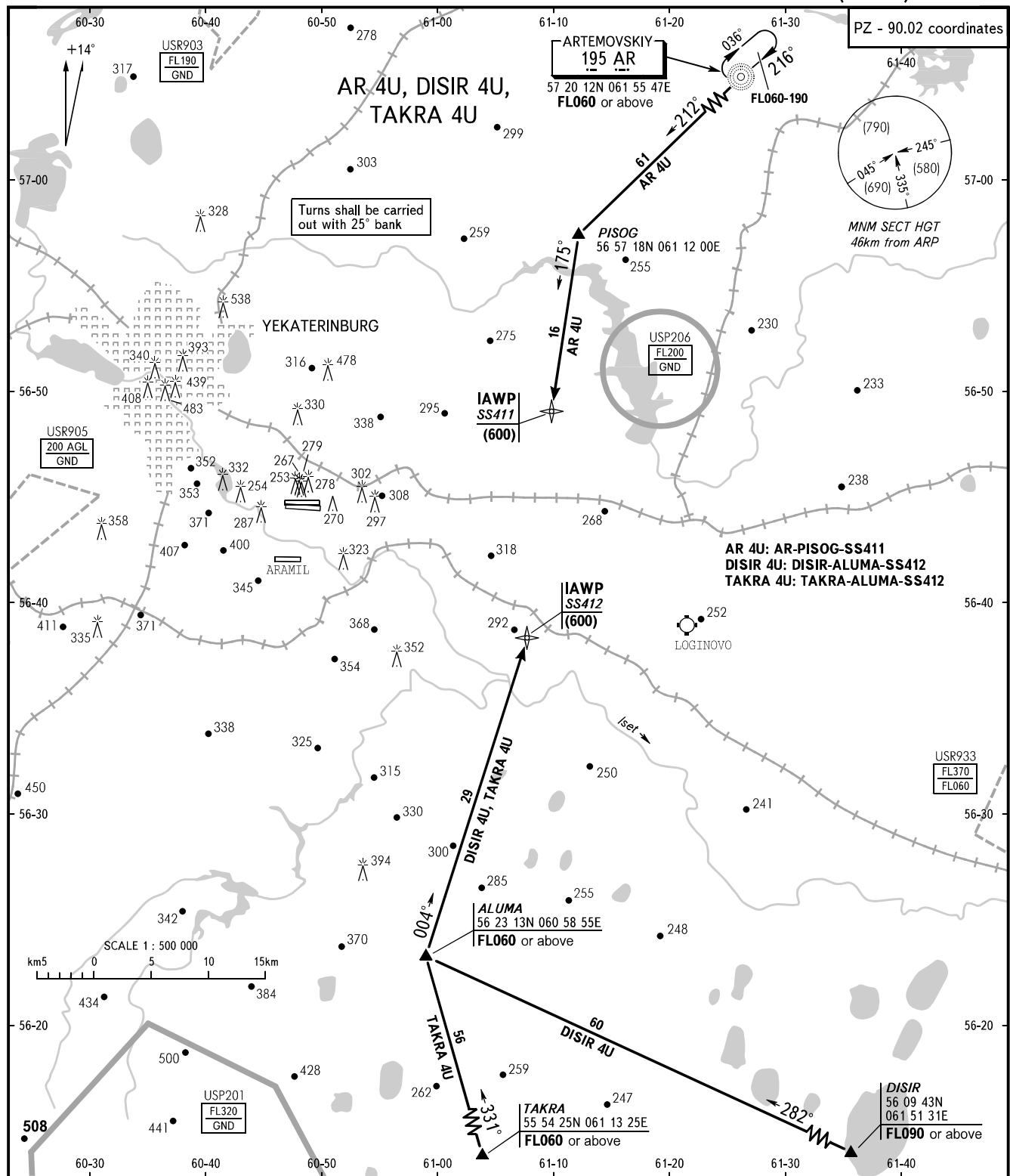


STANDARD ARRIVAL CHART
INSTRUMENT (STAR) - ICAO

YEKATERINBURG, RUSSIA
KOLTSOVO
RNAV (GNSS) RWY 26L

TRANSITION
LEVEL : 1



- 1 TRANSITION LEVEL:
 - FL050 when atmospheric pressure is 733mm mercury column or above;
 - FL060 when atmospheric pressure is less than 733mm mercury column and is above 706mm mercury column.

APPROACH 125.9
 RADAR 118.7
 TOWER 120.0

BEARINGS AND TRACKS ARE MAGNETIC
 ALTITUDES, HEIGHTS AND ELEVATIONS ARE IN METRES
 DISTANCES ARE IN KILOMETRES

CHANGE: DIST FM NDB AR, R areas