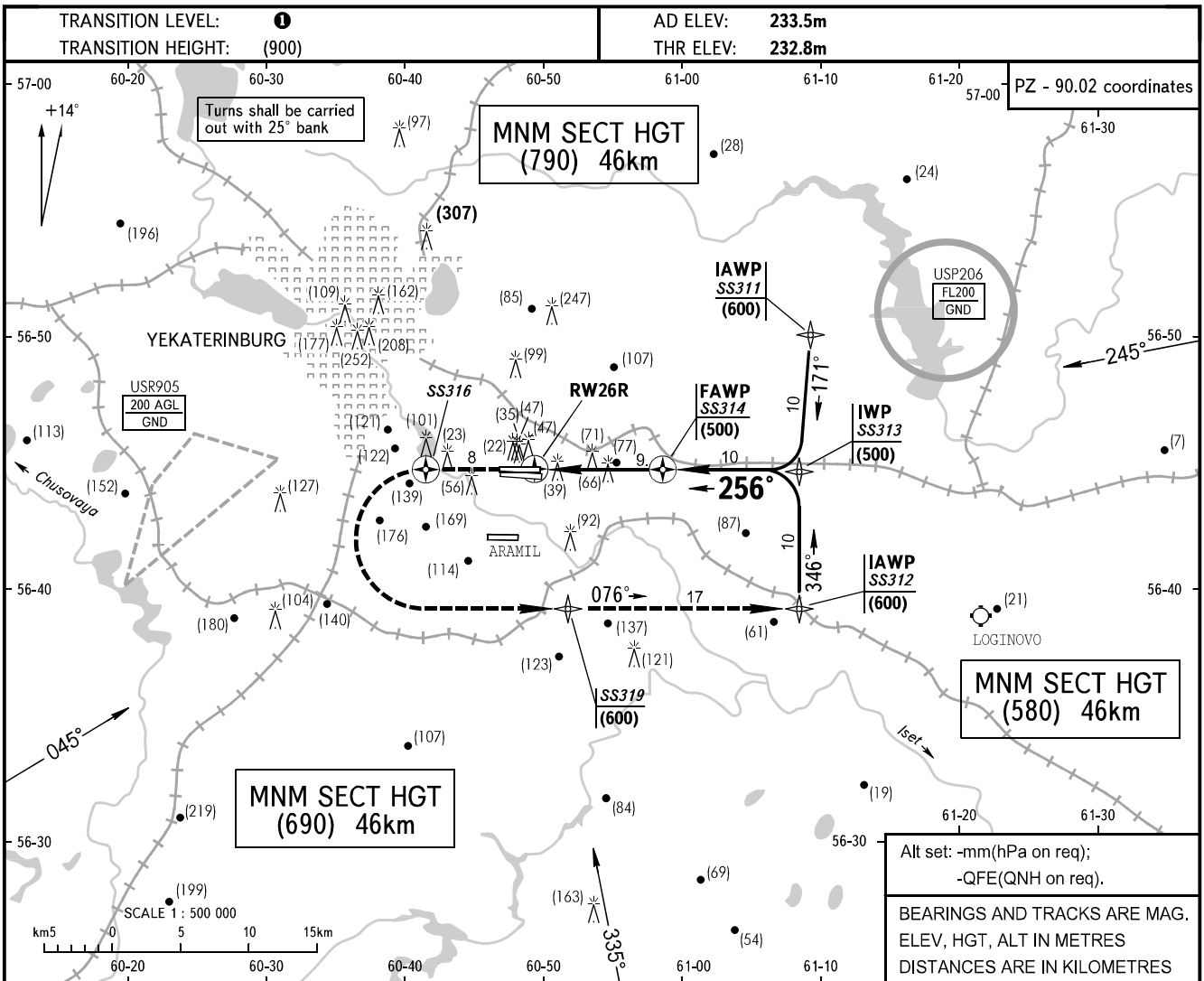


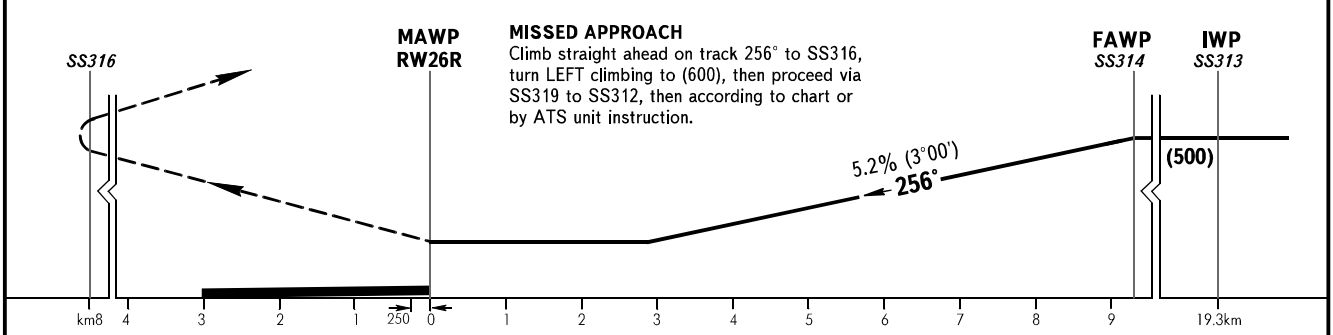
**INSTRUMENT
APPROACH
CHART - ICAO**

APPROACH	125.9
RADAR	118.7
TOWER	120.0

**YEKATERINBURG, RUSSIA
KOLTSOVO
RNAV (GNSS) RWY 26R**



Distance to RWY26R	9.3	8.0	7.0	6.0	5.0	4.0	3.0	2.0	1.0
HAT	(500)	(435)	(380)	(330)	(275)	(225)	(175)	(120)	(70)



OCA/H		A	B	C	D			
Straight-in Approach	GNSS	383(150)	383(150)	383(150)	383(150)			
GROUND SPEED		km/h	130	170	190	230	260	300
RATE OF DESCENT		m/s	1.9	2.5	2.7	3.3	3.8	4.3

1 TRANSITION LEVEL:
- FL050 when atmospheric pressure is 733mm mercury column or above;
- FL060 when atmospheric pressure is less than 733mm mercury column and is above 706mm mercury column.

WARNING
Distance and crossing height of LOM and LMM are given in reference to displaced THR. THR is displaced by 250m towards ARP. RWY length 2754m is available for landing.

CHANGE: ELE, FL in areas, OBST