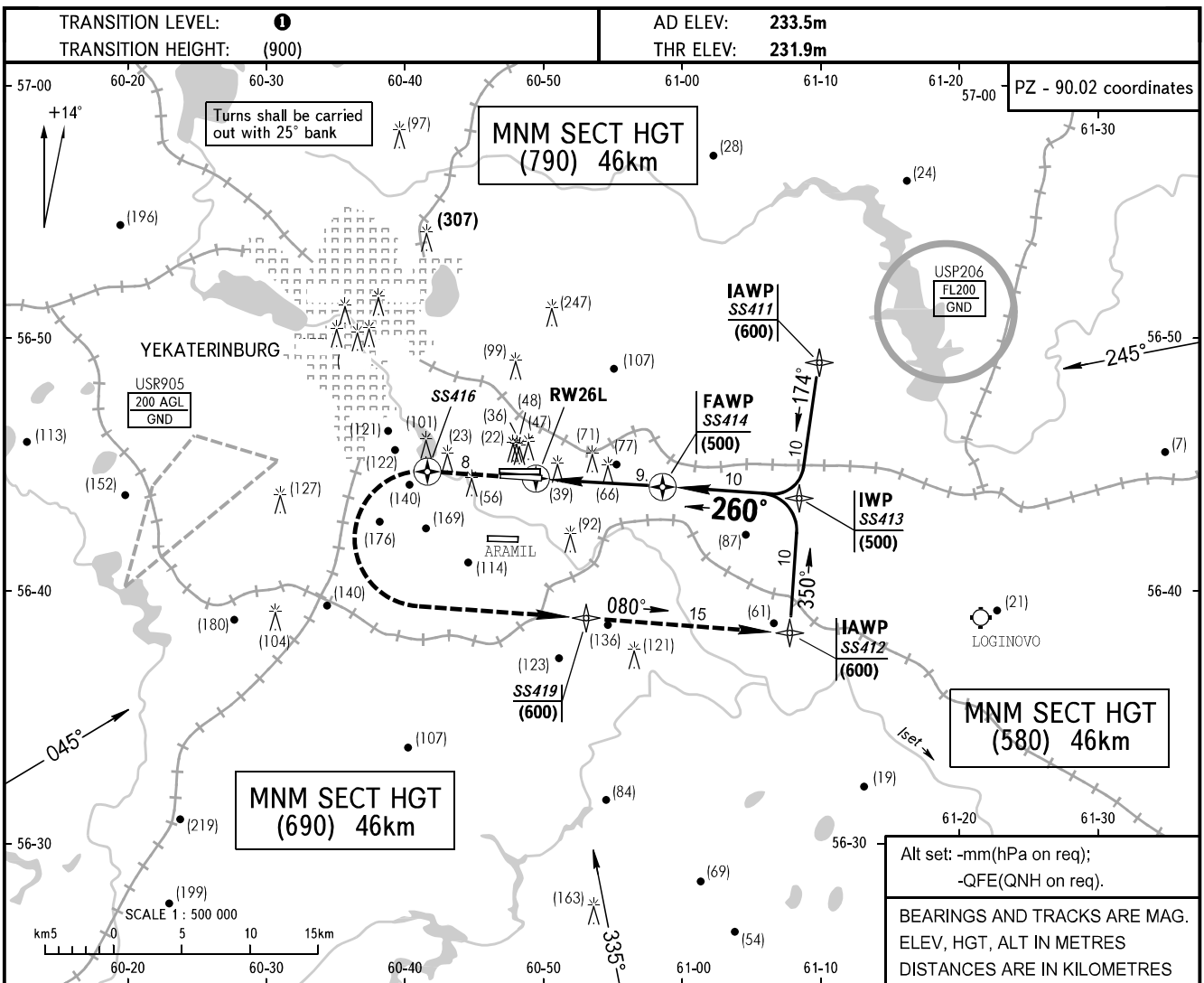


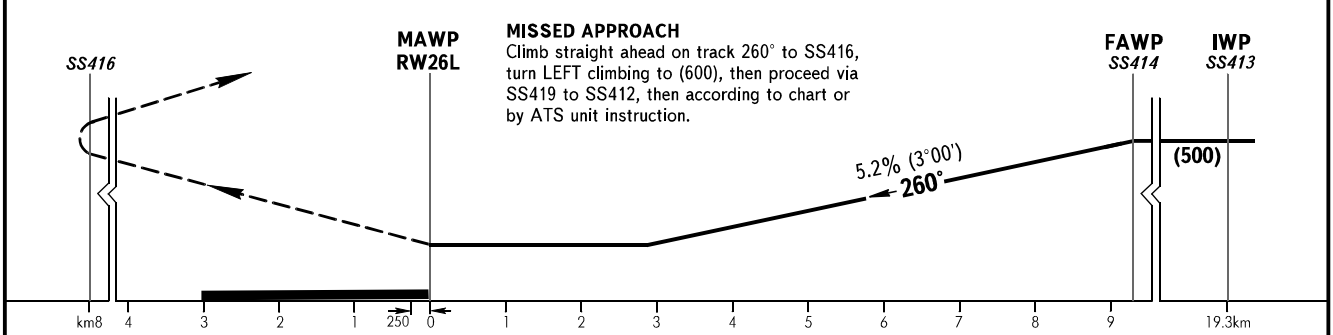
**INSTRUMENT
APPROACH
CHART - ICAO**

**YEKATERINBURG, RUSSIA
KOLTSOVO
RNAV (GNSS) RWY 26L**

APPROACH	125.9
RADAR	118.7
TOWER	120.0



Distance to RWY26L	9.3	8.0	7.0	6.0	5.0	4.0	3.0	2.0	1.0
HAT	(500)	(435)	(380)	(330)	(275)	(225)	(175)	(120)	(70)



OCA/H		A	B	C	D	1 TRANSITION LEVEL: - FL050 when atmospheric pressure is 733mm mercury column or above; - FL060 when atmospheric pressure is less than 733mm mercury column and is above 706mm mercury column. WARNING: Distance and crossing height of LOM and LMM are given in reference to displaced THR. THR is displaced by 325m towards ARP. RWY length 2701m is available for landing.	
Straight-in Approach	GNSS	382(150)	382(150)	382(150)	382(150)		
GROUND SPEED	km/h	130	170	190	230	260	300
RATE OF DESCENT	m/s	1.9	2.5	2.7	3.3	3.8	4.3

CHANGE: ELEV, FL in areas, OBS