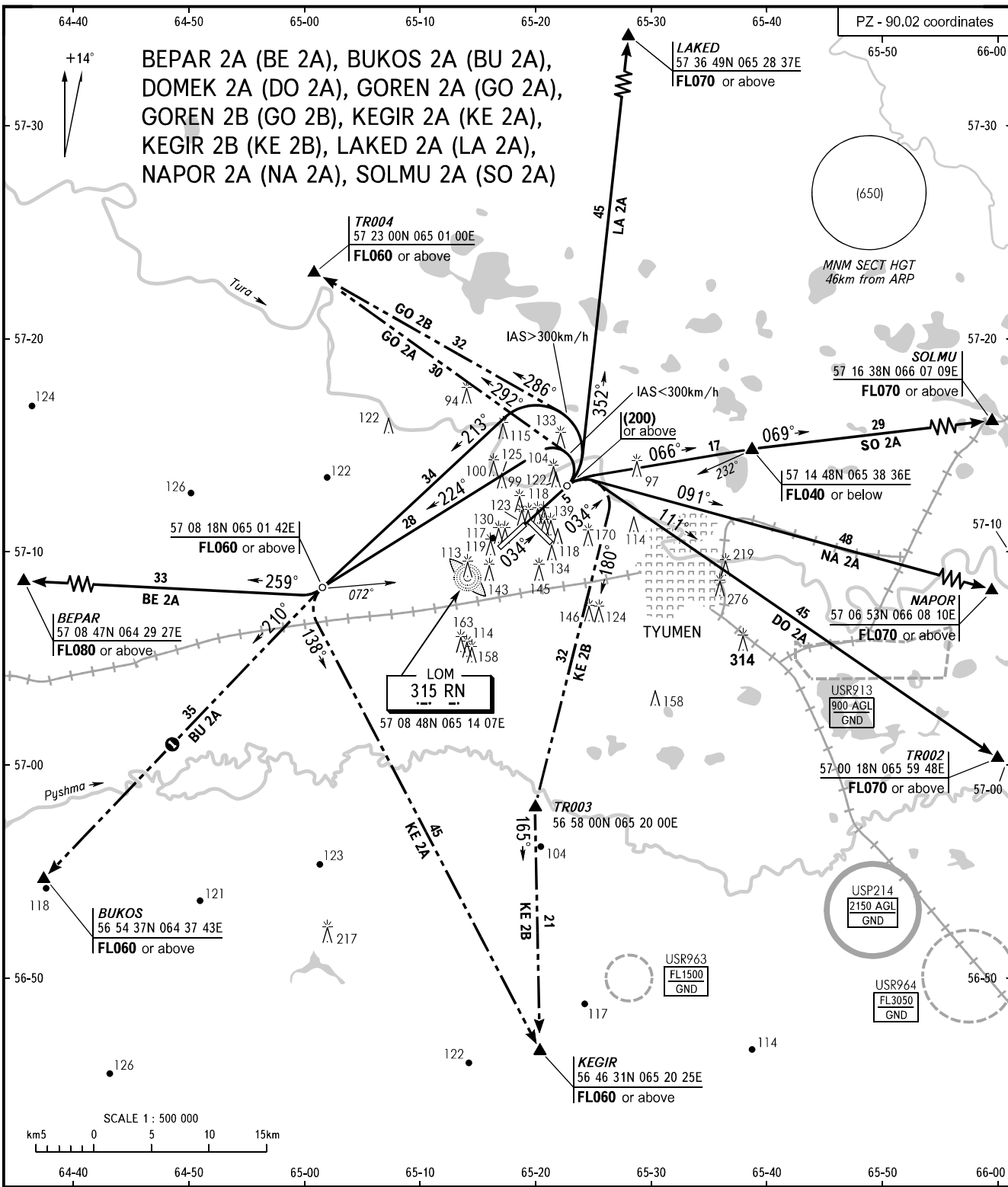


STANDARD DEPARTURE CHART
INSTRUMENT (SID) - ICAO

TRANSITION
HEIGHT : (700)

TYUMEN, RUSSIA
ROSHCHINO
RWY 03



START 118.200
APPROACH 126.100

① Only for Russian users of airspace.

WARNING:

1. For departure via CRP TR003 ACFT with IAS ≥ 300km/h shall execute the initial turn with a radius not more than 3.5km.
2. It is allowed to carry out the initial turn at height less than (200), except DO 2A, SO 2A, NA 2A routes, in accordance with Aeroplane Flight Manual for specified ACFT type notifying ATC.

BEARINGS AND TRACKS ARE MAGNETIC
ALTITUDES, HEIGHTS AND ELEVATIONS ARE IN METRES
DISTANCES ARE IN KILOMETRES

CHANGE: New chart