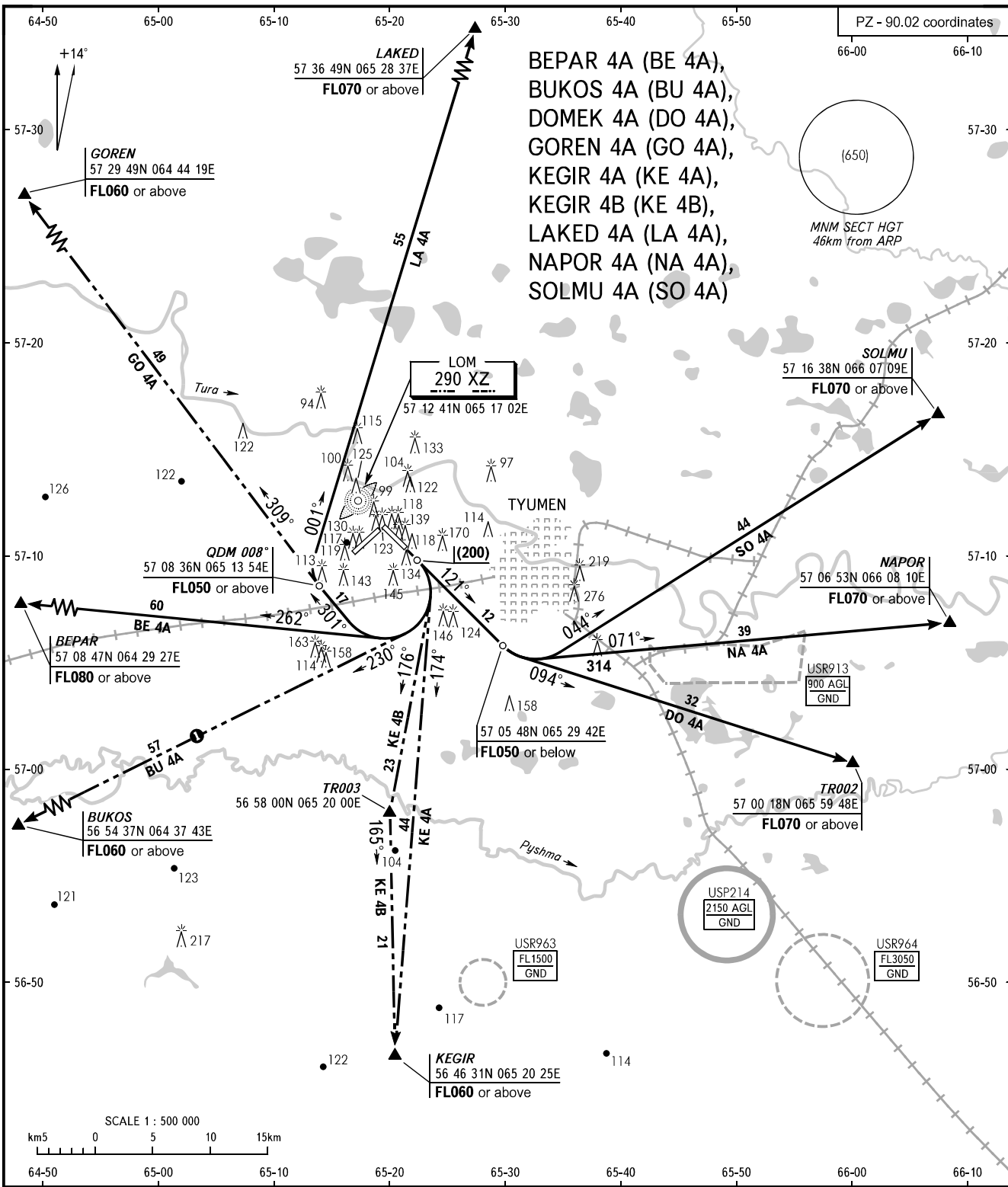


STANDARD DEPARTURE CHART
INSTRUMENT (SID) - ICAO

TRANSITION
HEIGHT : (700)

TYUMEN, RUSSIA
ROSHCHINO
RWY 12



BEPAR 4A (BE 4A),
BUKOS 4A (BU 4A),
DOMEK 4A (DO 4A),
GOREN 4A (GO 4A),
KEGIR 4A (KE 4A),
KEGIR 4B (KE 4B),
LAKED 4A (LA 4A),
NAPOR 4A (NA 4A),
SOLMU 4A (SO 4A)

START 118.200
APPROACH 126.100

① Only for Russian users of airspace.
WARNING
It is allowed to carry out the initial turn at height less than (200), except SID DO 4A, NA 4A, SO 4A in accordance with Aeroplane Flight Manual for the ACFT type in question notifying ATS unit.

BEARINGS AND TRACKS ARE MAGNETIC
ALTITUDES, HEIGHTS AND ELEVATIONS ARE IN METRES
DISTANCES ARE IN KILOMETRES

CHANGE: New chart