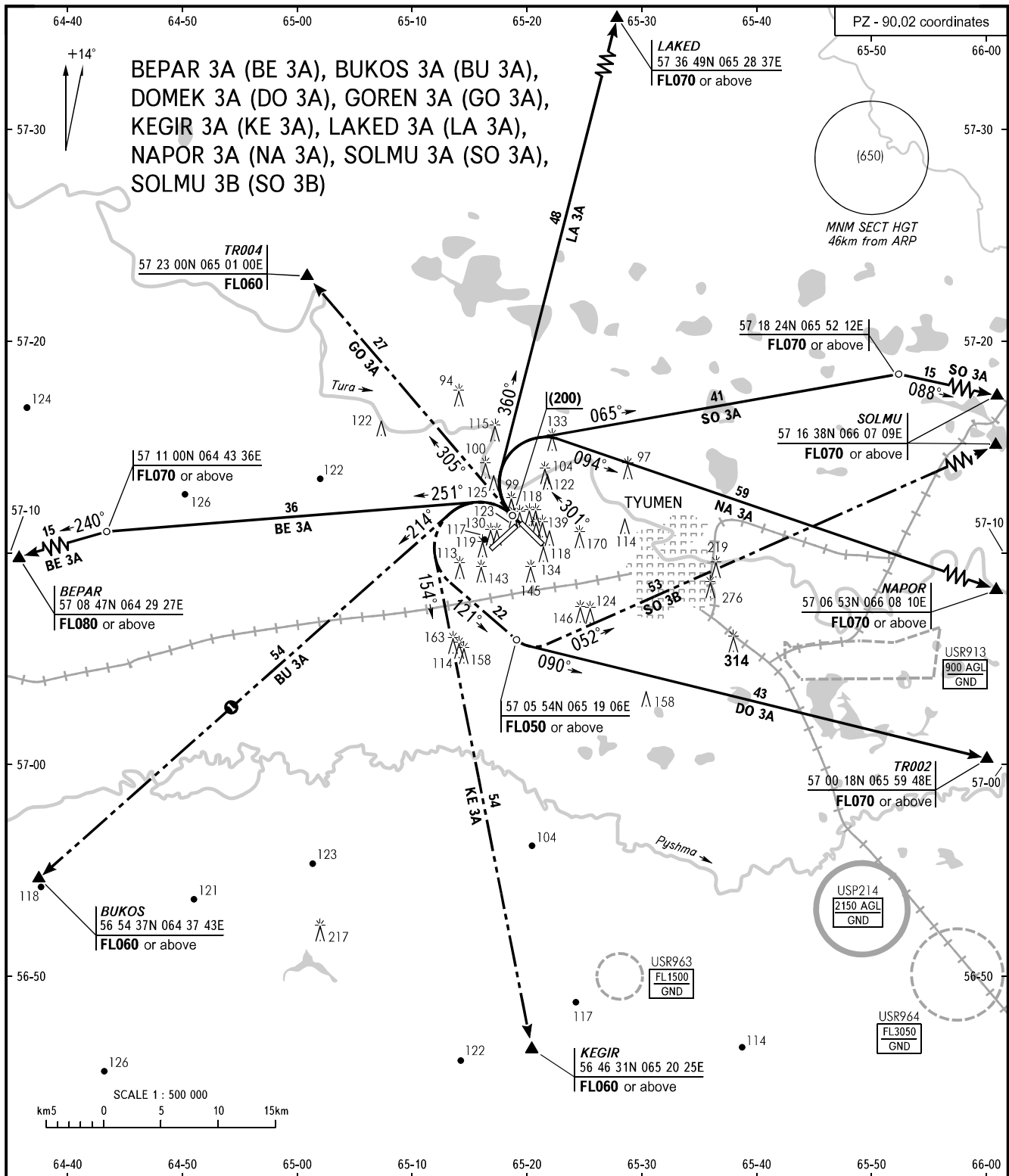


STANDARD DEPARTURE CHART  
INSTRUMENT (SID) - ICAO

TRANSITION  
HEIGHT : (700)

TYUMEN, RUSSIA  
ROSHCHINO  
RWY 30



START 118.200  
APPROACH 126.100

① Only for Russian users of airspace.

**WARNING**

It is allowed to carry out the initial turn at height less than (200), except SID DO 3A, SO 3B, NA 3A, SO 3A in accordance with Aeroplane Flight Manual for the ACFT type in question notifying ATS unit.

BEARINGS AND TRACKS ARE MAGNETIC  
ALTITUDES, HEIGHTS AND ELEVATIONS ARE IN METRES  
DISTANCES ARE IN KILOMETRES