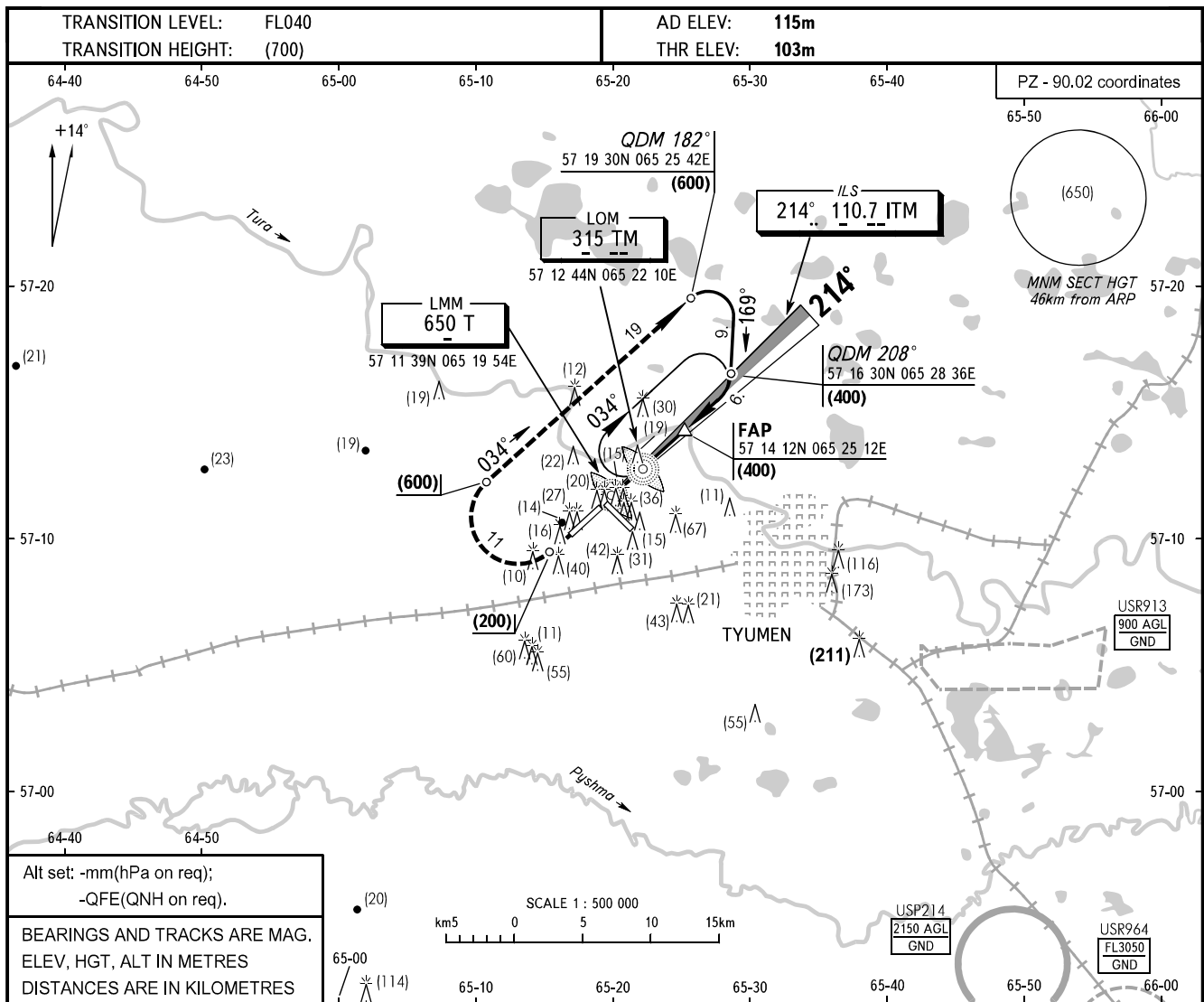


**INSTRUMENT
APPROACH
CHART - ICAO**

APPROACH	126.100
START	118.200

TYUMEN, RUSSIA
ROSHCHINO
ILS, 2 NDB RWY 21



MISSED APPROACH
Climb on track 214° to (200), then turn RIGHT onto track 034° climbing to (600), then according to chart.

Holding pattern over LOM. After crossing LOM 180° turn RIGHT, outbound 034°, minimum holding FL by ATC.

FAP (400)

MAPt 2 NDB

TM (210)

GPA 2°40'

RDH 15.5

HGT at LMM (70)

OCA/H		A	B	C	D
Straight-in	ILS	144(41)	148(45)	151(48)	154(51)
	2 NDB	203(100)	203(100)	203(100)	203(100)
Approach					

WARNING
Automatic ILS approach is carried out till HGT 60m.

GROUND SPEED	km/h	150	180	210	240	270	300	330	360	390	420	450
LOM-THR 4170m	min:sec	1.40	1.23	1.11	1.03	0.55	0.50	0.45	0.42	0.38	0.36	0.33
RATE OF DESCENT (Grad 4.7%)	m/s	2.0	2.4	2.7	3.1	3.5	3.9	4.3	4.7	5.1	5.5	5.9

CHANGE: WARNING, ELEV