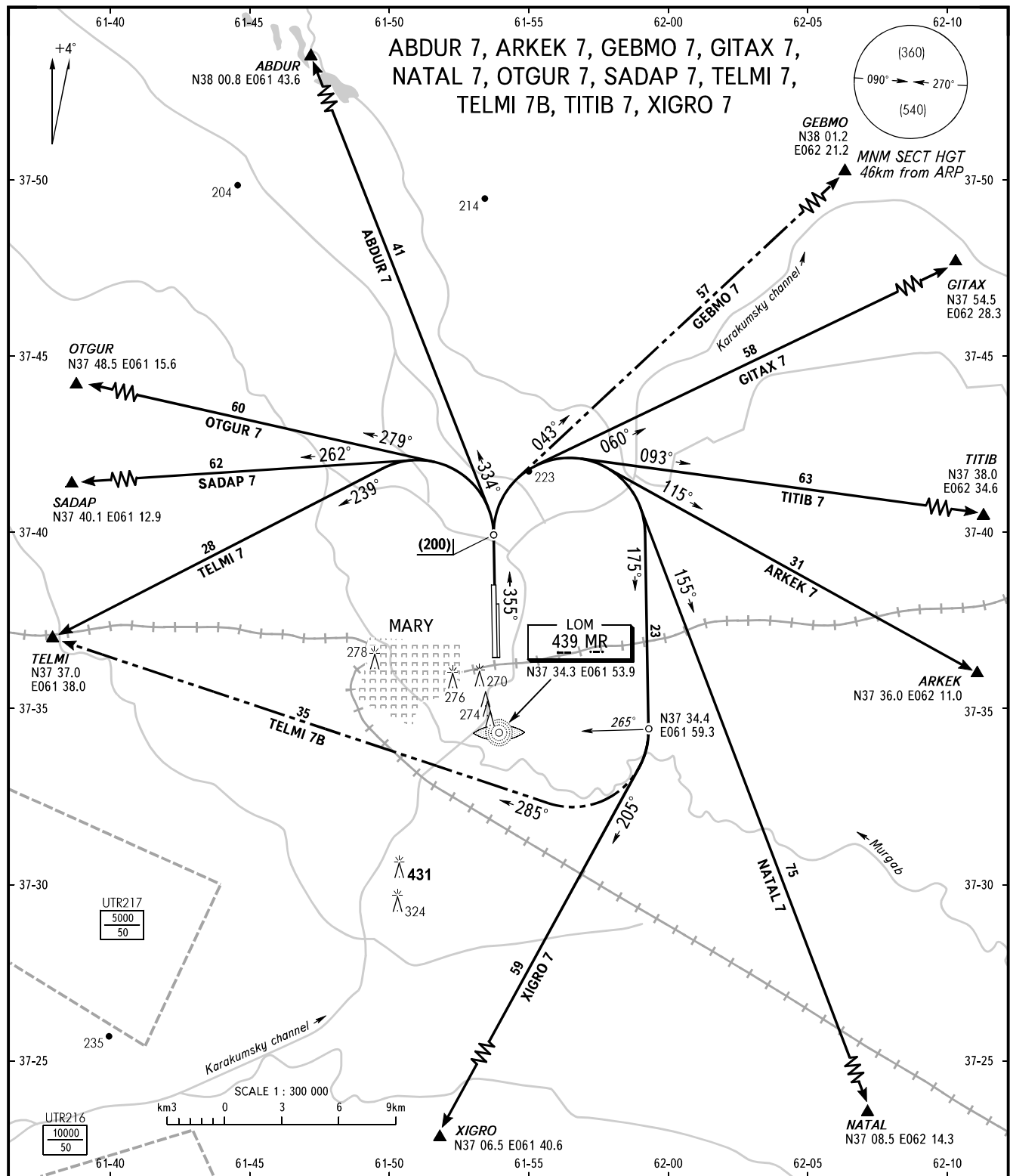


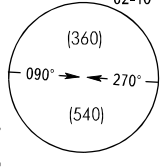
STANDARD DEPARTURE CHART  
INSTRUMENT (SID) - ICAO

TRANSITION  
HEIGHT : (900)

MARY, TURKMENISTAN  
MARY  
RWY 36R



ABDUR 7, ARKEK 7, GEBMO 7, GITAX 7,  
NATAL 7, OTGUR 7, SADAP 7, TELMI 7,  
TELMi 7B, TITIB 7, XIGRO 7



MARY	START	122.2
	RADAR	124.0
ASHGABAT	CONTROL	135.2

**WARNING**  
Altitudes of crossing AWY entry points are as directed by ATC.

BEARINGS AND TRACKS ARE MAGNETIC  
ALTITUDES, HEIGHTS AND ELEVATIONS ARE IN METRES AT 6000 OR BELOW  
DISTANCES ARE IN KILOMETRES  
FLIGHT LEVELS (FL) ARE IN FEET AT FL 210 OR ABOVE