

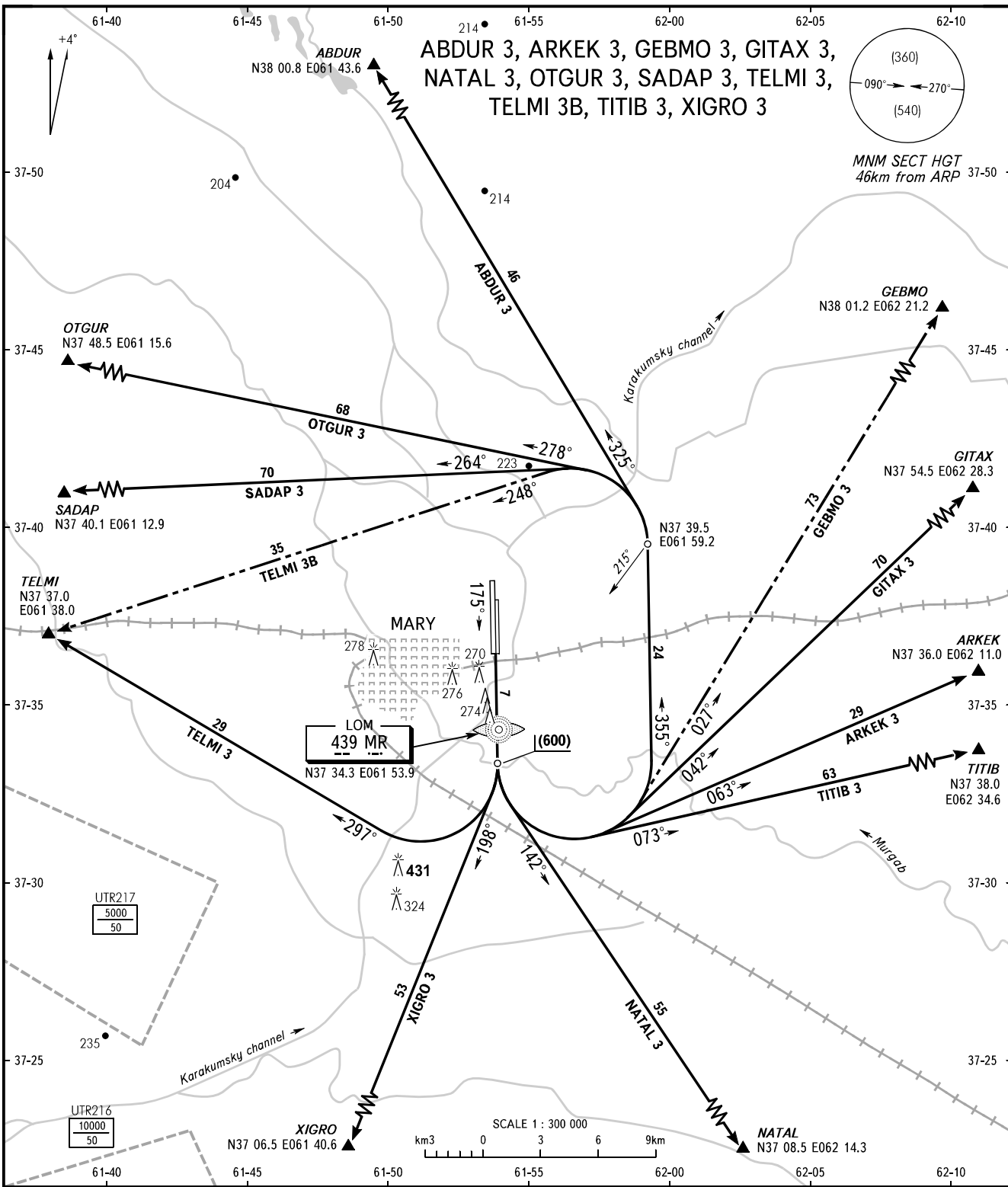
STANDARD DEPARTURE CHART
INSTRUMENT (SID) - ICAO

TRANSITION
HEIGHT : (900)

MARY, TURKMENISTAN

MARY

RWY 18R



MARY	START	122.2
	RADAR	124.0
ASHGABAT	CONTROL	135.2

WARNING
Altitudes of crossing AWY entry points are as directed by ATC.

BEARINGS AND TRACKS ARE MAGNETIC
ALTITUDES, HEIGHTS AND ELEVATIONS ARE IN METRES AT 6000 OR BELOW
DISTANCES ARE IN KILOMETRES
FLIGHT LEVELS (FL) ARE IN FEET AT FL 210 OR ABOVE

CHANGE: New chart