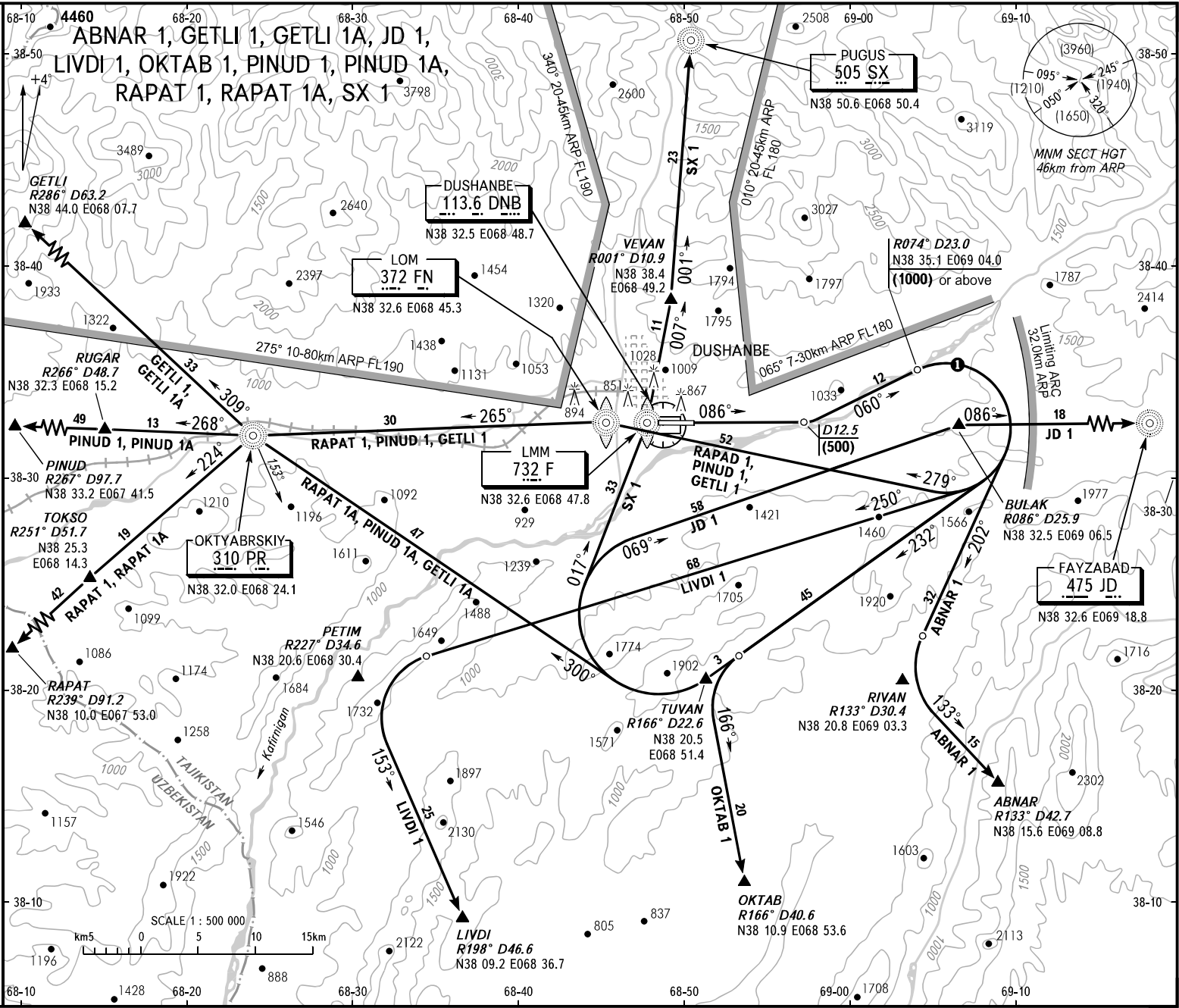


STANDARD DEPARTURE CHART
INSTRUMENT (SID) - ICAO

TRANSITION
HEIGHT : (1800)

DUSHANBE, TAJIKISTAN
DUSHANBE
RWY 09



TOWER
APPROACH
CONTROL
119.2
127.1
133.1

ⓘ Turns shall be executed at IAS not more than 450km/h and with a bank not less than 20°.

WARNING
On R086° DME DNB climb to not below (500) at 12.5km DME DNB, then on track 060° climb to not below (1000) at 23.0km DME DNB. Then carry out the appropriate SID procedure.
Climb gradient up to (1000) is 4.5%.

BEARINGS AND TRACKS ARE MAGNETIC
ALTITUDES, HEIGHTS AND ELEVATIONS ARE IN METRES
DISTANCES ARE IN KILOMETRES