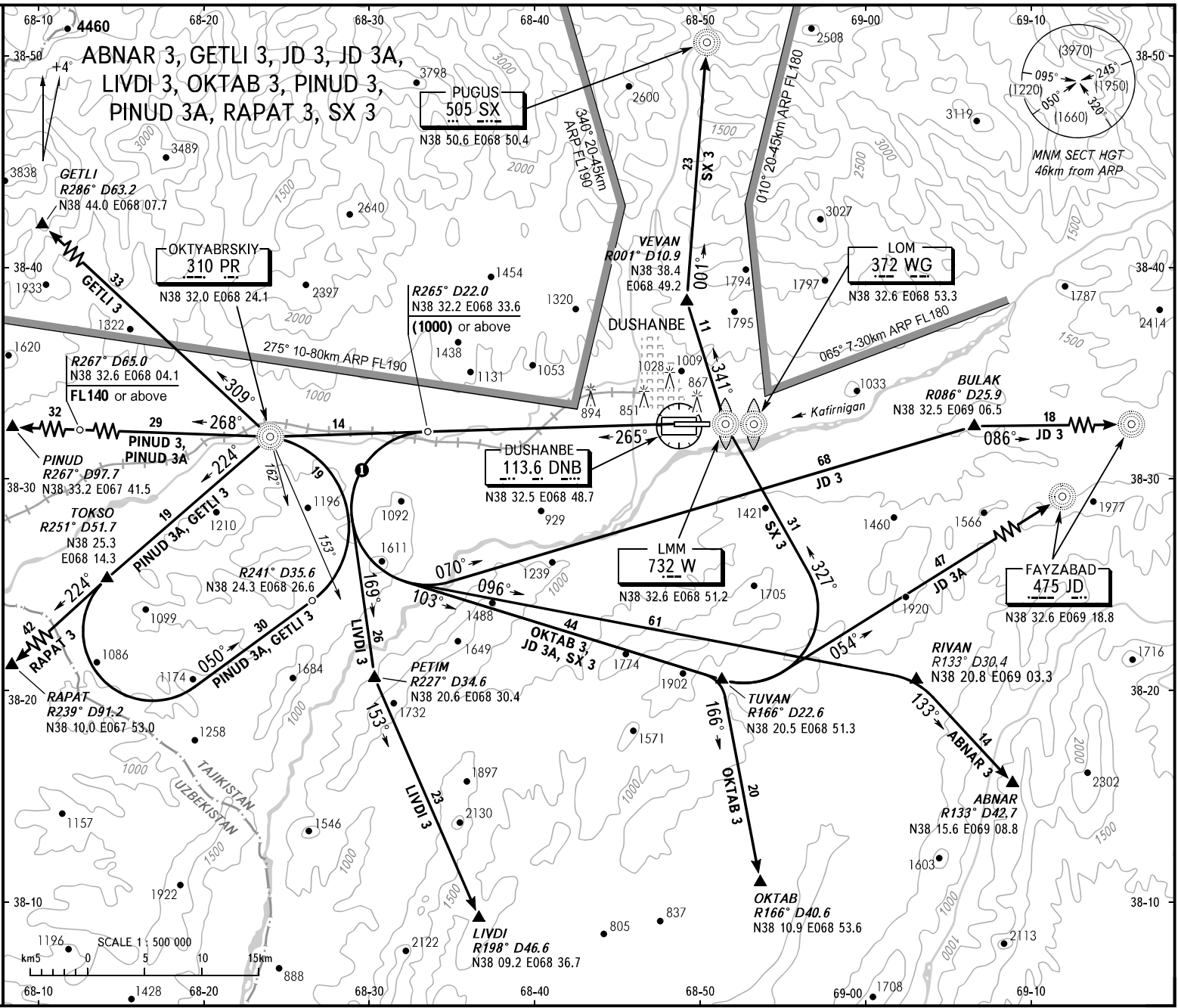


STANDARD DEPARTURE CHART
INSTRUMENT (SID) - ICAO

TRANSITION
HEIGHT : (1800)

DUSHANBE, TAJIKISTAN
DUSHANBE
RWY 27



TOWER
APPROACH
CONTROL

119.2
127.1
133.1

BEARINGS AND TRACKS ARE MAGNETIC
ALTITUDES, HEIGHTS AND ELEVATIONS ARE IN METRES
DISTANCES ARE IN KILOMETRES

① All turns till joining the corridor shall be executed at IAS not more than 450km/h (in any case IAS shall not be less than minimum IAS indicated in the Aeroplane Flight Manual for the aircraft type for the reasons of flight safety) and with a bank not less than 20°.

WARNING
On R265° DME DNB climb to not below (1000) at 22.0km DME DNB (climb gradient 4.5%), then carry out the appropriate SID procedure.