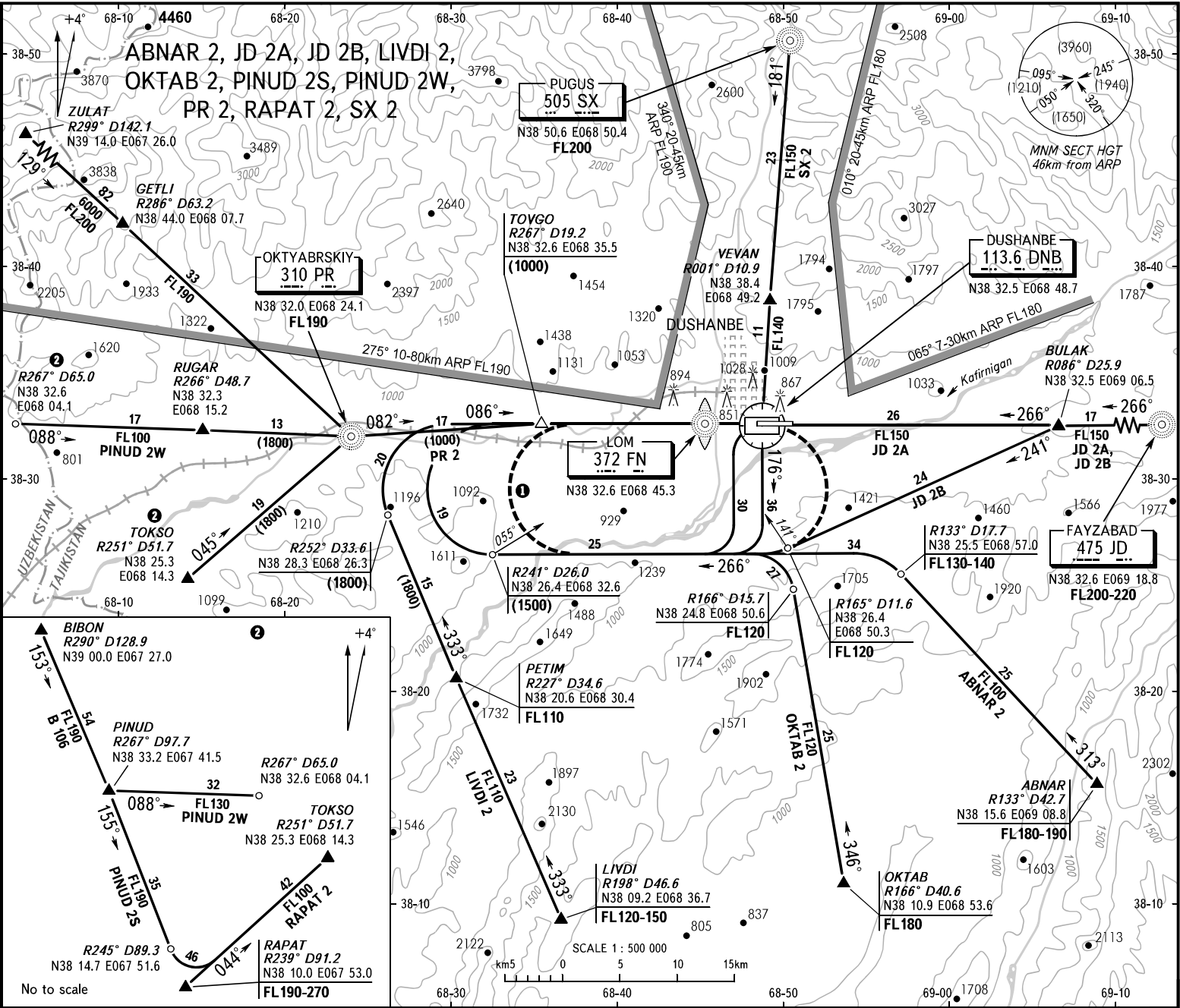


STANDARD ARRIVAL CHART
INSTRUMENT (STAR) - ICAO

TRANSITION
LEVEL: FL100

DUSHANBE, TAJIKISTAN
DUSHANBE
RWY 09



HOLDING PATTERN: - the minimum FL130, IAS maximum 425km/h;
- FL140, IAS maximum 445km/h;
- 200km DME DNB (2min).

WARNING:

1. For arrival routes via OKTYABRSKIY cross NDB PR at FL190, VORDME DNB at FL130. For arrival routes SX 2, JD 2A cross VORDME DNB at FL140, FL150 respectively. For arrival routes PR 2, SX 2, JD 2A VORDME DNB is IAF.
2. In case of radio communication failure maintain the last assigned FL till TOYGO, then proceed to VORDME DNB and join the holding pattern. After crossing VORDME DNB commence descent for approach procedure.
3. Due to hazardous terrain arrival routes are designated for IAS maximum 450km/h, bank angle 25° and descent gradient 5.2%.

APPROACH
TOWER
127.1
119.2

ABNAR 2, JD 2A, JD 2B, LIVDI 2,
OKTAB 2, PINUD 2S, PINUD 2W,
PR 2, RAPAT 2, SX 2

BEARINGS AND TRACKS ARE MAGNETIC
ALTITUDES, HEIGHTS AND ELEVATIONS ARE IN METRES
DISTANCES ARE IN KILOMETRES