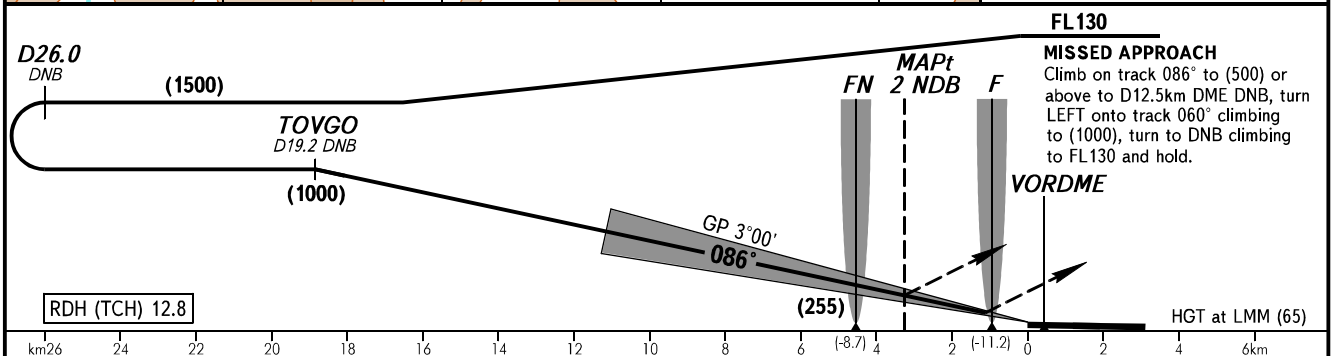
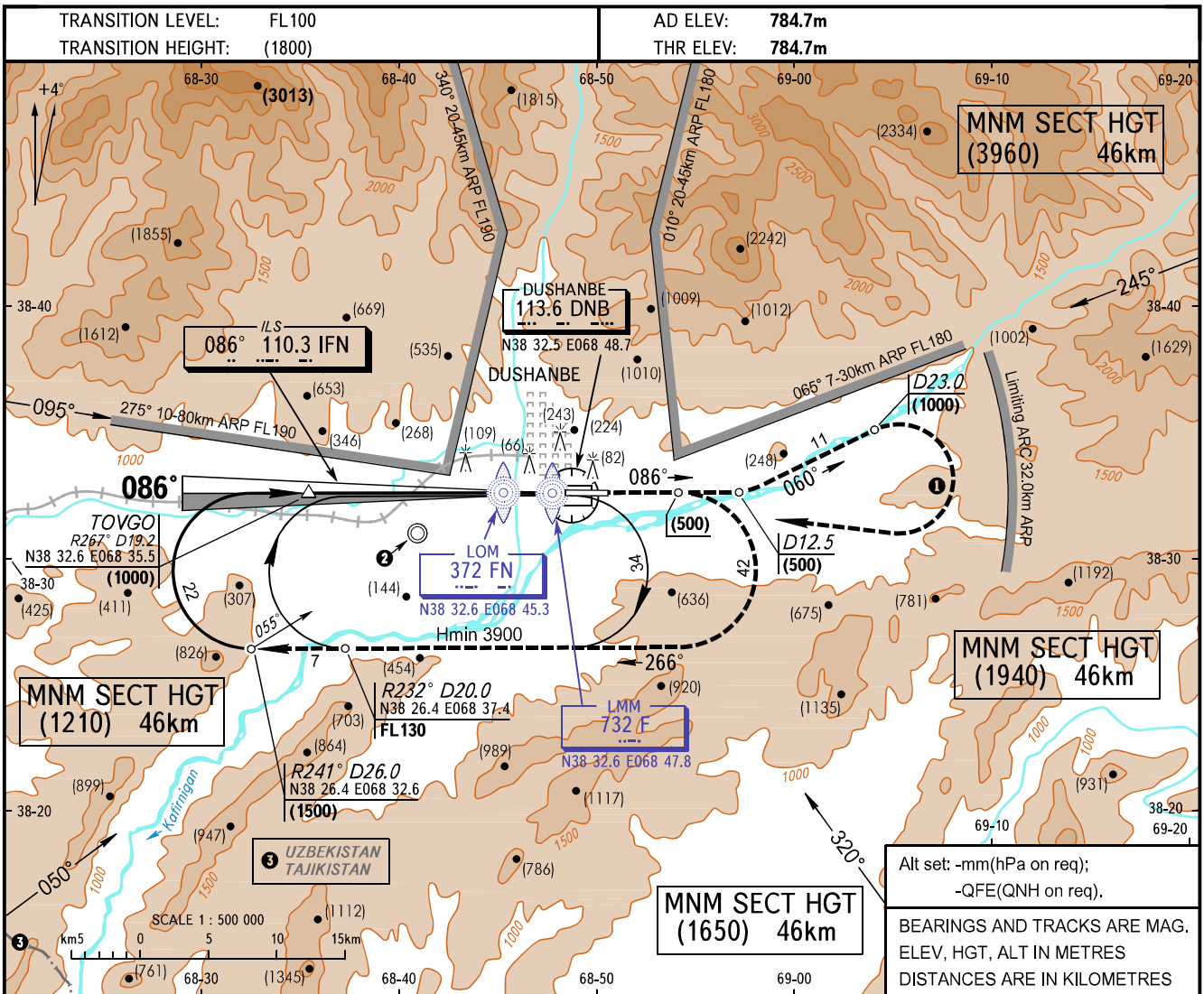


**INSTRUMENT  
APPROACH  
CHART - ICAO**

APPROACH **127.1**  
TOWER **119.2**

**DUSHANBE, TAJIKISTAN**  
DUSHANBE  
ILS/VORDME, 2 NDB/DME, 2 NDB RWY 09



OCA/H		A	B	C	D
Straight-in Approach	<b>ILS</b>	834(49)	837(52)	840(55)	843(58)
	<b>2 NDB/DME</b>	903(118)	903(118)	903(118)	903(118)
	<b>2 NDB</b>	1231(446)	1231(446)	1231(446)	1231(446)

**1** Turns shall be executed at IAS not more than 450km/h with a 25° bank.  
**2** Attention  
There is an aerodrome with the similar runway bearings.

**WARNING**  
Cross LMM at (75) by radio altimeter.

GROUND SPEED	km/h	150	180	210	240	270	300	330	360	390	420	450
LOM-THR 4546m	min:sec	1.49	1.31	1.18	1.08	1.01	0.55	0.50	0.46	0.42	0.39	0.36
RATE OF DESCENT (Grad 5.2%)	m/s	2.2	2.7	3.1	3.6	4.0	4.4	4.8	5.3	5.8	6.2	6.7