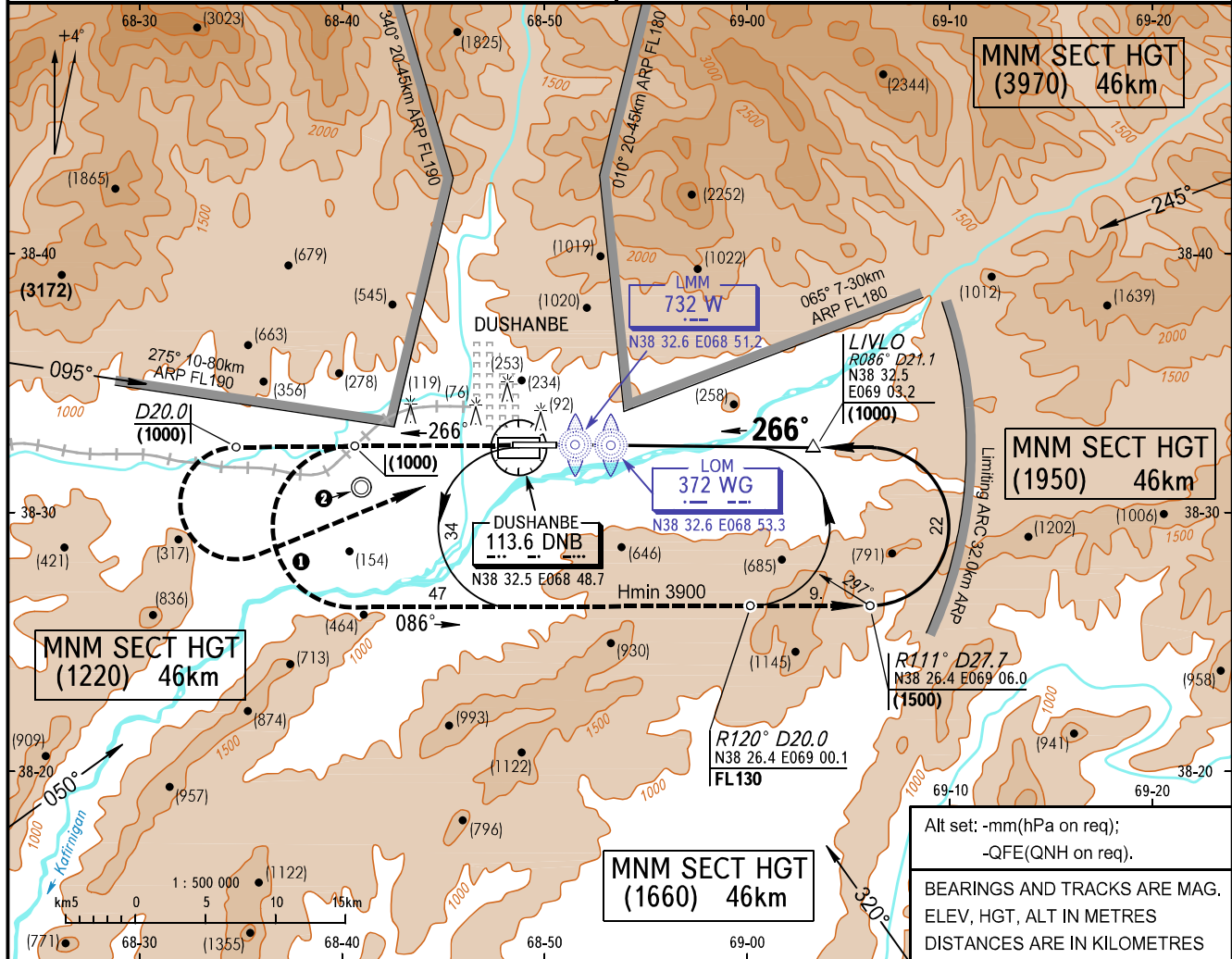


**INSTRUMENT
APPROACH
CHART - ICAO**

APPROACH **127.1**
TOWER **119.2**

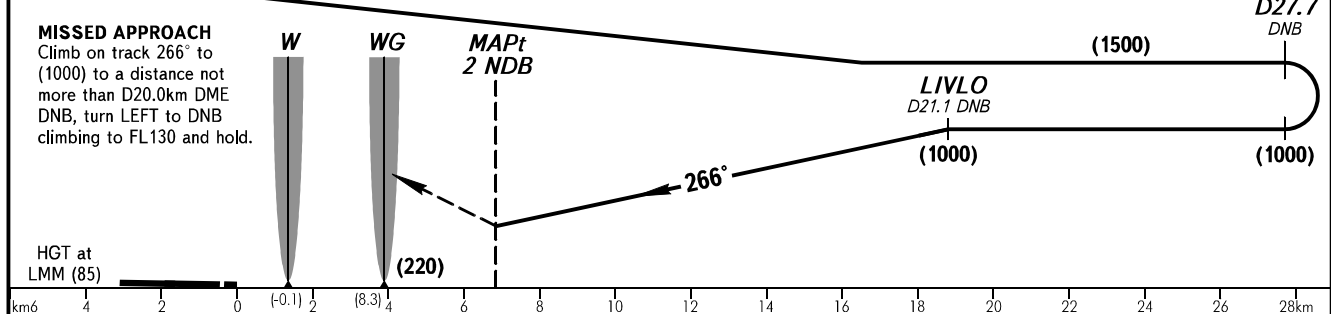
DUSHANBE, TAJIKISTAN
DUSHANBE
2 NDB/DME, 2 NDB RWY 27

TRANSITION LEVEL: FL100
TRANSITION HEIGHT: (1800)
AD ELEV: **784.7m**
THR ELEV: **774.7m**



Alt set: -mm(hPa on req);
-QFE(QNH on req).
BEARINGS AND TRACKS ARE MAG.
ELEV, HGT, ALT IN METRES
DISTANCES ARE IN KILOMETRES

FL130



		OCA/H	A	B	C	D							
Straight-in	Approach	2 NDB/DME	912(137)	912(137)	912(137)	912(137)							
		2 NDB	1183(408)	1183(408)	1183(408)	1183(408)							
GROUND SPEED		km/h	150	180	210	240	270	300	330	360	390	420	450
FAP-MAPt 11930m		min:sec	4.46	3.59	3.24	2.59	2.39	2.23	2.10	1.59	1.50	1.43	1.35
RATE OF DESCENT (Grad 5.2%)		m/s	2.1	2.6	3.0	3.4	3.8	4.3	4.7	5.1	5.5	5.9	6.4

① Turns shall be executed at IAS not more than 450km/h with a 25° bank.
② Attention
There is an aerodrome with the similar runway bearings.

CHANGE: OCA/H