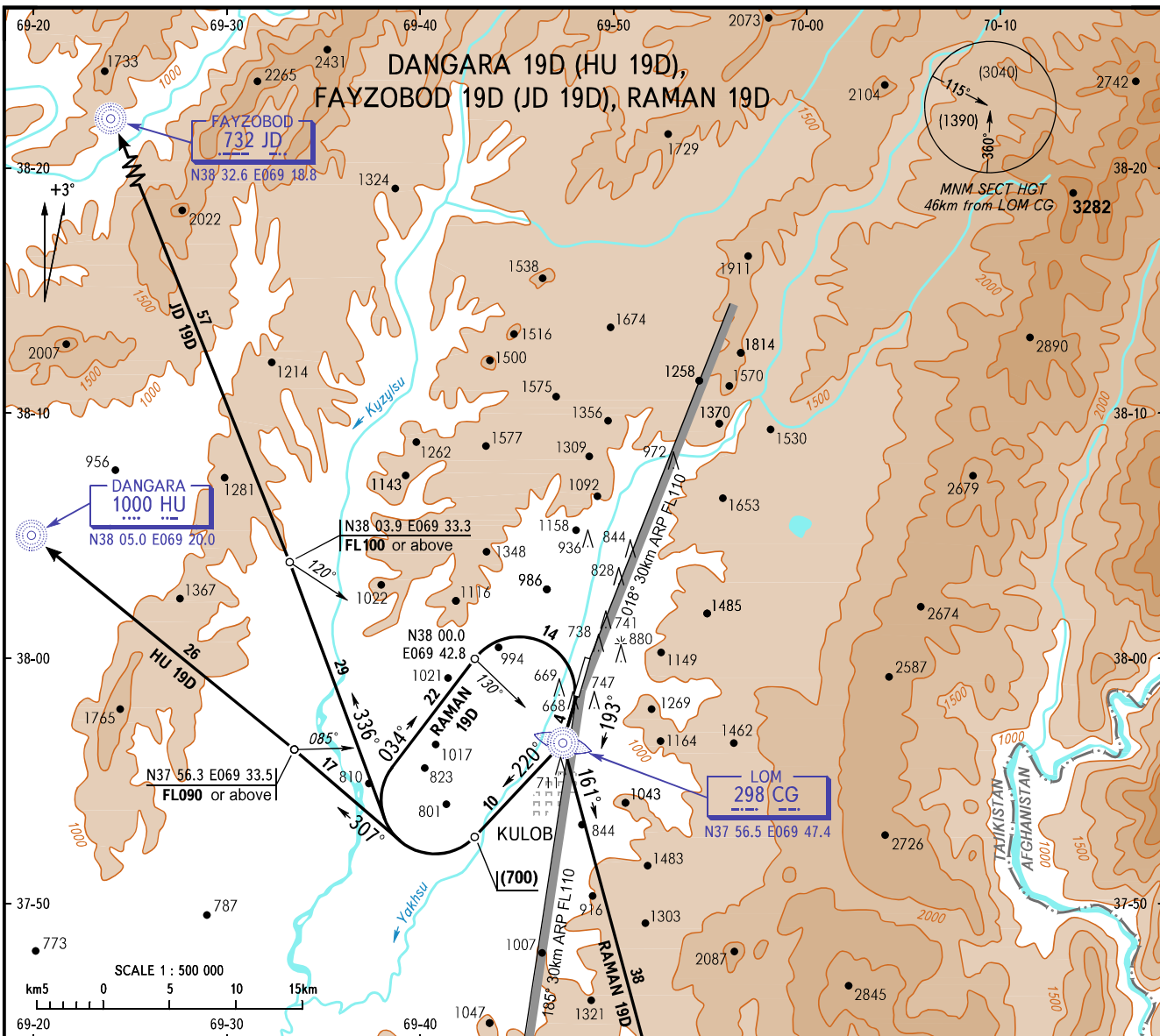


STANDARD DEPARTURE CHART
INSTRUMENT (SID) - ICAO

TRANSITION
HEIGHT : (1500)

KULOB, TAJIKISTAN
KULOB
RWY 19



SID	ROUTE	ALTITUDE
JD 19D (FAYZOBOD 19D)	Straight ahead to CG, turn RIGHT onto track 220° MAG climbing to (700), turn RIGHT onto track 336° MAG and proceed to JD climbing to FL130. Climb gradient is 3.9%.	Cross QDM 120° CG at FL100 or above.
RAMAN 19D	Straight ahead to CG, turn RIGHT onto track 220° MAG climbing to (700), turn RIGHT onto track 034° MAG and proceed to QDM 130° CG, turn RIGHT to CG climbing to FL130. Climb gradient is 4.6%.	Cross LOM CG at FL130 or above.
HU 19D (DANGARA 19D)	Straight ahead to CG, turn RIGHT onto track 220° MAG climbing to (700), turn RIGHT onto track 307° MAG and proceed to HU climbing to FL110. Climb gradient is 5.3%.	Cross QDM 085° CG at FL090 or above.

TOWER	118.5	km/h								
		300	350	400	450	500	550	600	650	700
m/s	GRAD 3.9%	3.3	3.8	4.4	4.9	5.5	6.0	6.6	7.1	7.6
	GRAD 4.6%	3.9	4.5	5.1	5.8	6.4	7.0	7.7	8.3	9.0
	GRAD 5.3%	4.5	5.2	5.9	6.6	7.2	8.0	8.6	9.3	10.1

- WARNING:**
- The minimum climb gradient is 5.2% up to (700).
 - IAS in climb is not more than 450km/h, bank angle is not less than 20°.
 - Crossing altitudes for entry points of airway are as directed by ATC unit.

BEARINGS AND TRACKS ARE MAGNETIC
ALTITUDES, HEIGHTS AND ELEVATIONS ARE IN METRES
DISTANCES ARE IN KILOMETRES