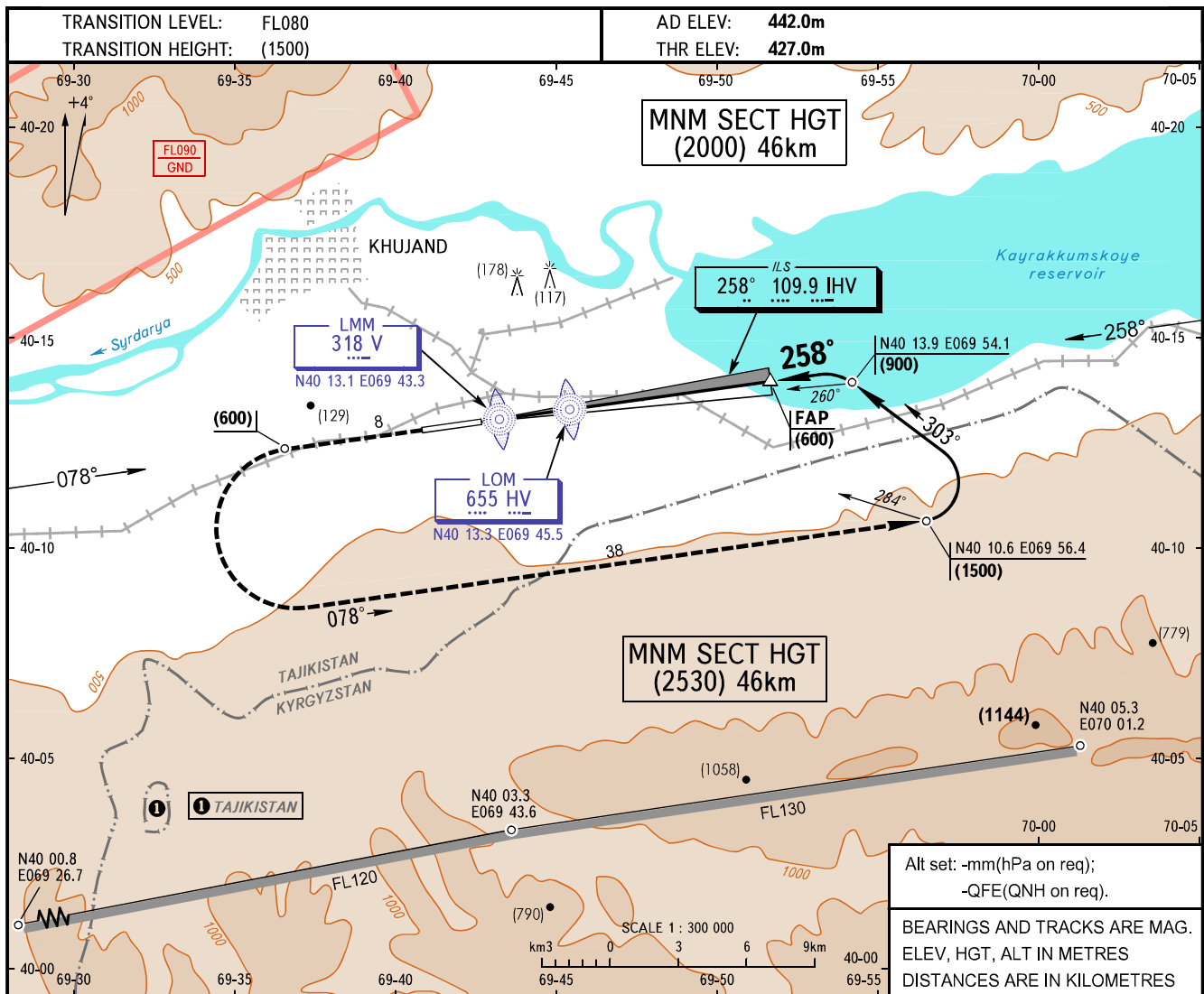


**INSTRUMENT
APPROACH
CHART - ICAO**

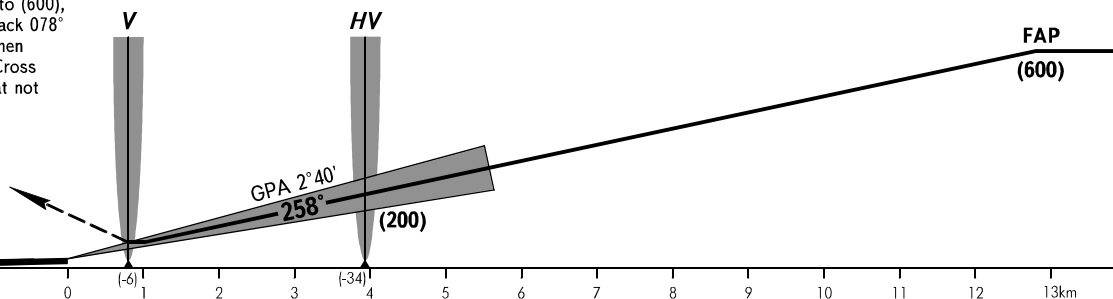
APPROACH	124.8
RADAR	120.3
TOWER	120.3

KHUJAND, TAJIKISTAN
KHUJAND
ILS, PAR RWY 26



MISSED APPROACH

Climb on track 258° to (600), then turn LEFT on track 078° climbing to (1500), then according to chart. Cross LMM (back course) at not below (200).



OCA/H		A	B	C	D							
Straight-in	ILS	470(43)	472(45)	475(48)	478(51)							
	PAR	491(64)	494(67)	497(70)	500(73)							
Approach												
GROUND SPEED	km/h	150	180	210	240	270	300	330	360	390	420	450
LOM-THR 3920m	min:sec	1.34	1.18	1.07	0.99	0.92	0.85	0.78	0.71	0.64	0.57	0.50
RATE OF DESCENT (Grad 4.7%)	m/s	2.0	2.4	2.8	3.1	3.6	3.9	4.3	4.7	5.1	5.4	6.0