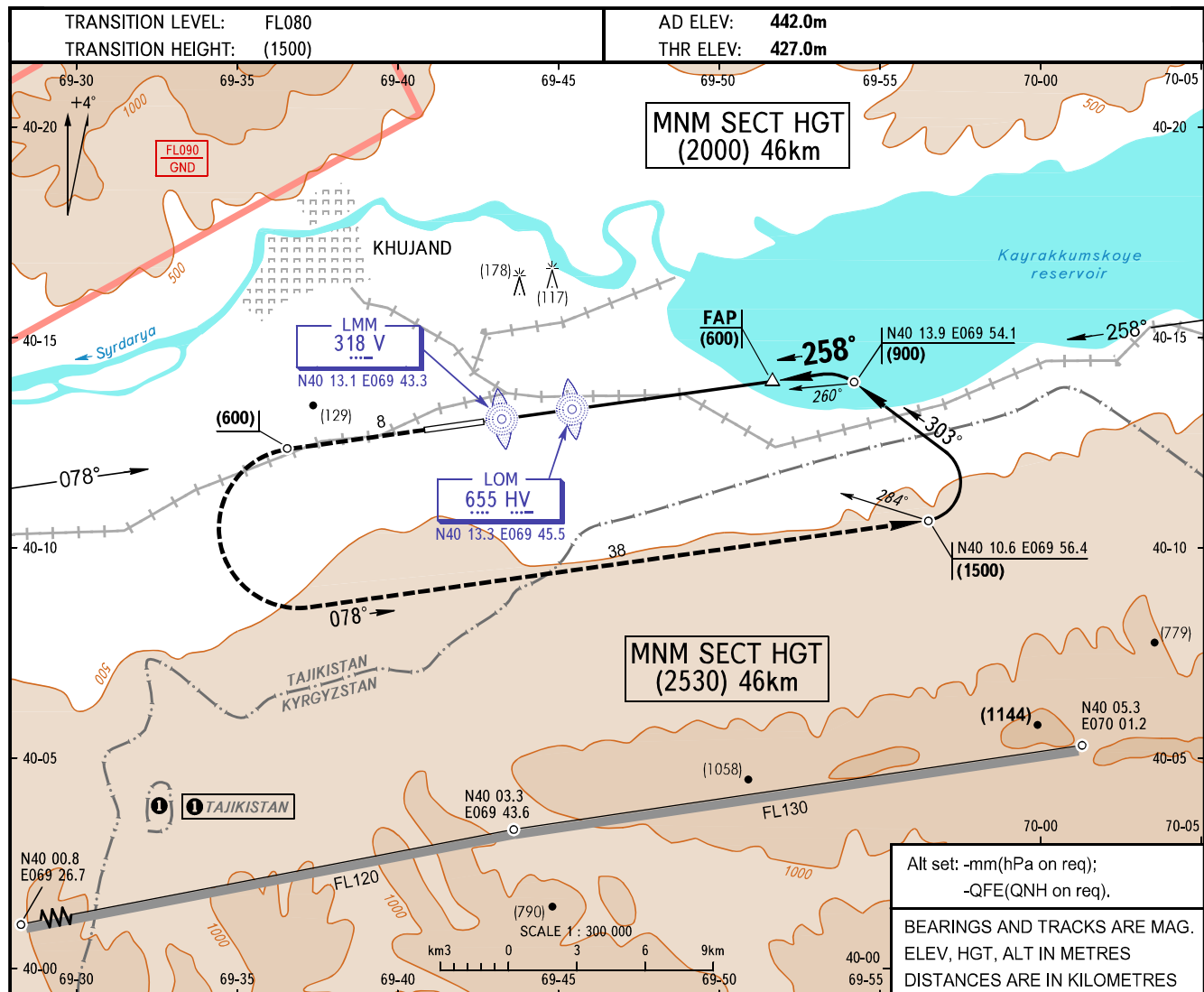


**INSTRUMENT
APPROACH
CHART - ICAO**

APPROACH	124.8
RADAR	120.3
TOWER	120.3

KHUJAND, TAJIKISTAN
KHUJAND
2 NDB RWY 26



MISSED APPROACH
Climb on track 258° to (600), then turn LEFT on track 078° climbing to (1500), then according to chart. Cross LMM (back course) at not below (200).

MAPt 2 NDB V **HV** **FAP (600)**

HGTat LMM(55)

4.7% (2° 40')
258°

km3 2 1 0 (-6) 1 2 3 4 (-34) 5 6 7 8 9 10 11 12 13km

OCA/H		A	B	C	D
Straight-in	2 NDB	526(99)	526(99)	526(99)	526(99)
	WO RAD CTL				
Approach					

GROUND SPEED	km/h	150	180	210	240	270	300	330	360	390	420	450
LOM-THR 3920m	min:sec	1.34	1.18	1.07	0.59	0.52	0.47	0.43	0.39	0.36	0.34	0.31
RATE OF DESCENT	m/s	2.0	2.4	2.8	3.1	3.6	3.9	4.3	4.7	5.1	5.4	6.0

Alt set: -mm(hPa on req);
-QFE(QNH on req).

BEARINGS AND TRACKS ARE MAG.
ELEV, HGT, ALT IN METRES
DISTANCES ARE IN KILOMETRES

SCALE 1 : 300 000

CHANGE: FL