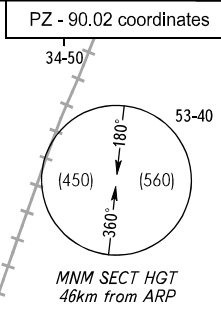
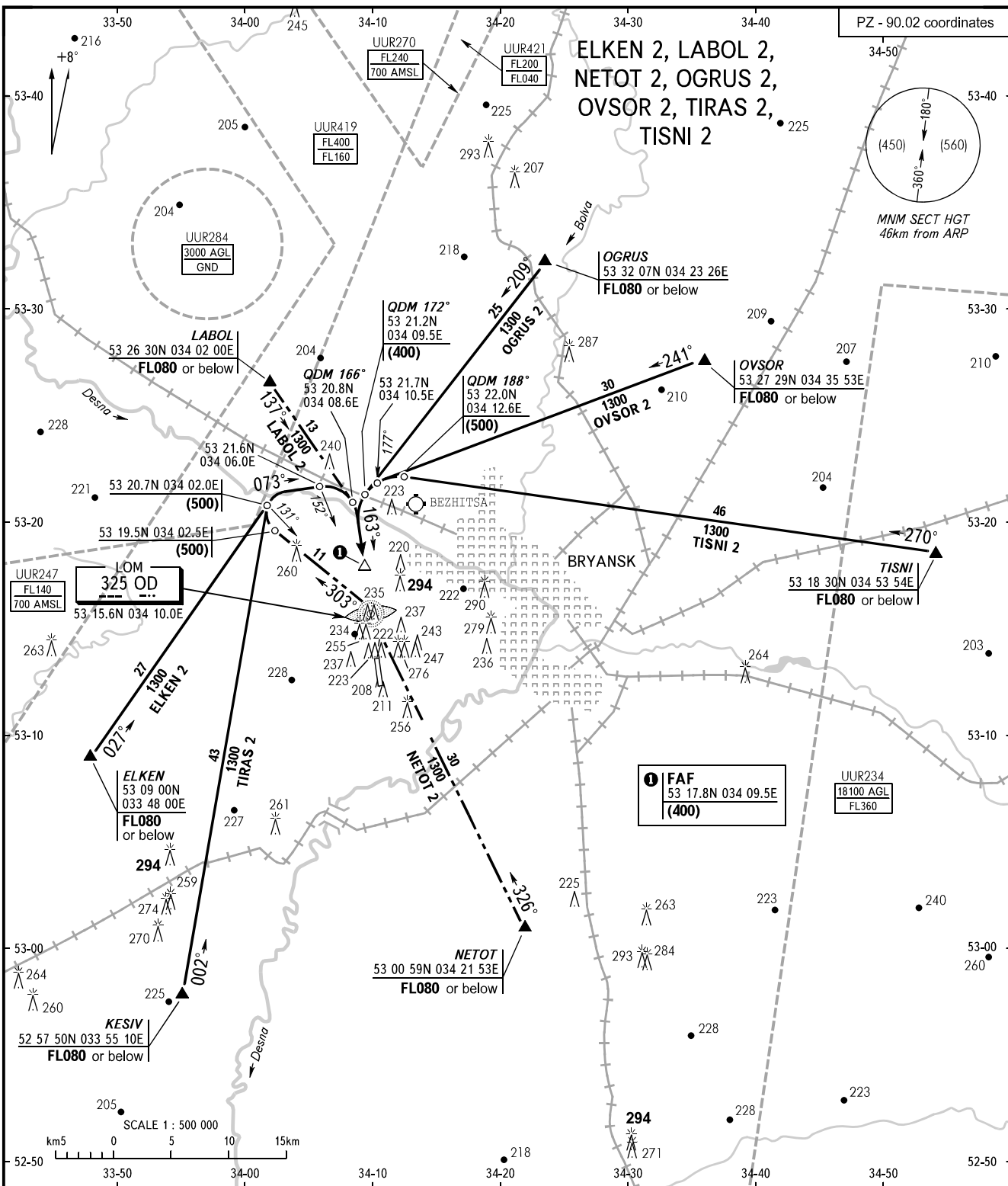


STANDARD ARRIVAL CHART
INSTRUMENT (STAR) - ICAO

BRYANSK, RUSSIA
BRYANSK
RWY 16

TRANSITION
LEVEL : FL040



TOWER 118.500

- WARNING:**
1. ACFT shall reach transition level FL040 at 10km before base turn and at 20km before FAF during straight-in approach.
 2. Proceed to LOM as directed by ATS unit, turn on track 343°, then according to the rectangular approach pattern.

BEARINGS AND TRACKS ARE MAGNETIC
ALTITUDES, HEIGHTS AND ELEVATIONS ARE IN METRES
DISTANCES ARE IN KILOMETRES

CHANGE: New chart