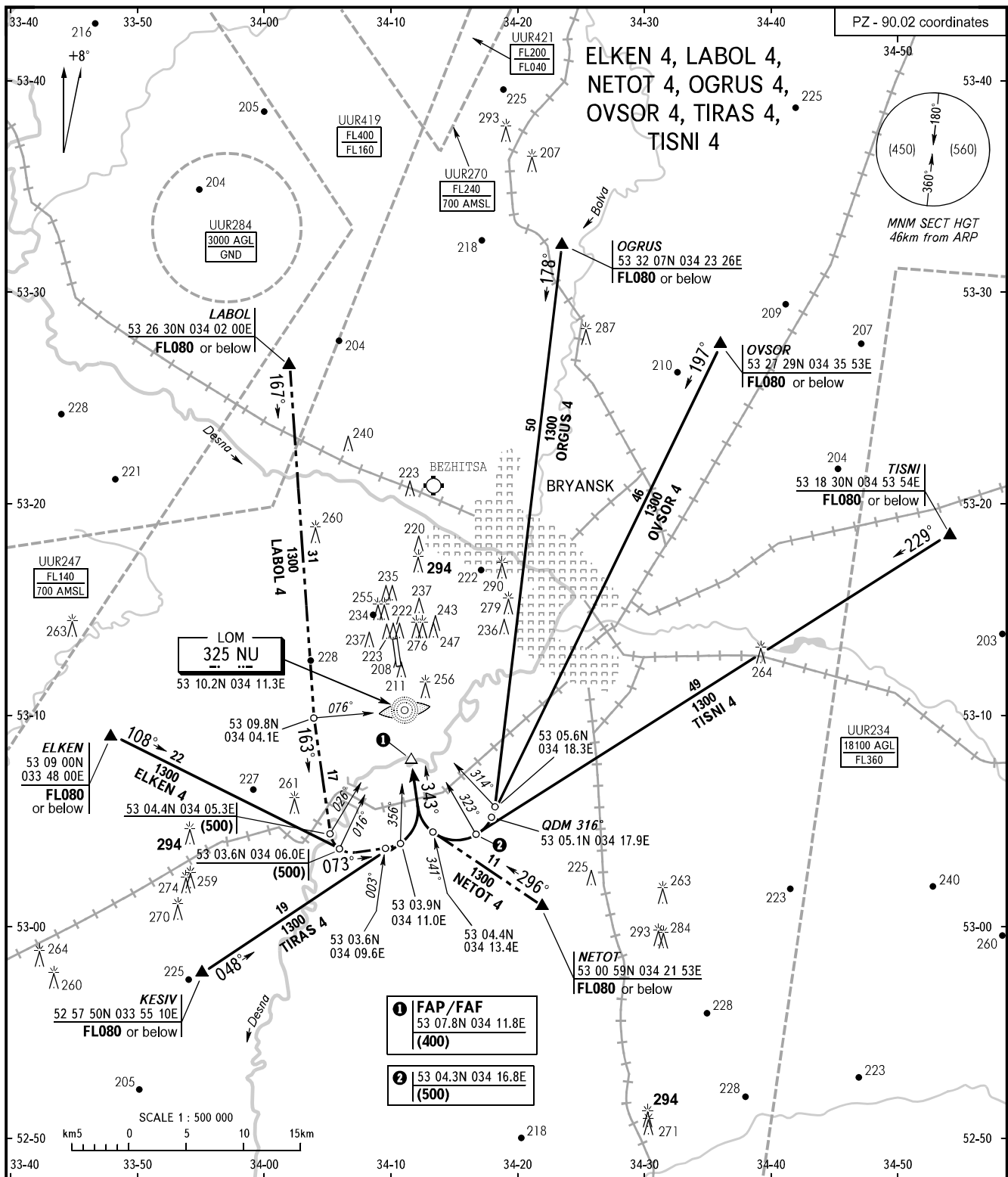


STANDARD ARRIVAL CHART
INSTRUMENT (STAR) - ICAO

BRYANSK, RUSSIA
BRYANSK
RWY 34

TRANSITION
LEVEL : **FL040**



TOWER **118.500**

WARNING:

1. ACFT shall reach transition level FL040 at 10km before base turn and at 20km before FAP/FAF during straight-in approach.
2. Proceed to LOM as directed by ATS unit, turn on track 163°, then according to the rectangular approach pattern.

BEARINGS AND TRACKS ARE MAGNETIC
ALTITUDES, HEIGHTS AND ELEVATIONS ARE IN METRES
DISTANCES ARE IN KILOMETRES