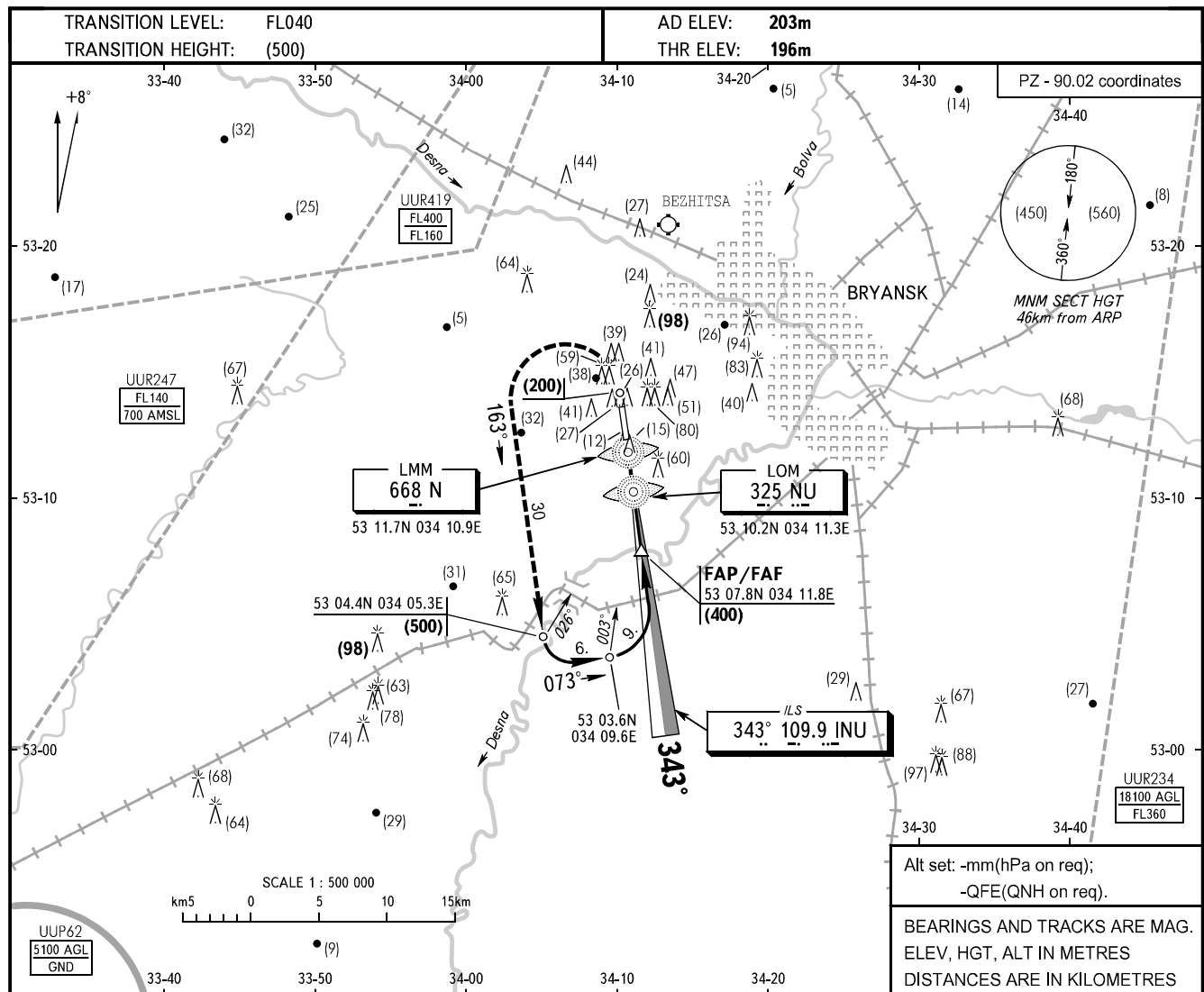


**INSTRUMENT
APPROACH
CHART - ICAO**

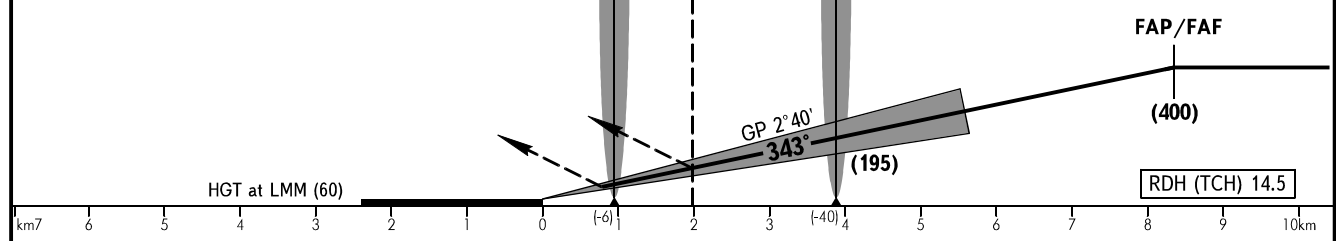
TOWER **118.500**

BRYANSK, RUSSIA
BRYANSK
ILS, 2 NDB RWY 34



MISSED APPROACH
Climb on track 343° to (200), then turn LEFT on track 163° climbing to (500) then according to chart.

FAF is AZM 162° DIST 9.5 from TAR (53 12 52N 034 10 19E).



| OCA/H | | A | B | C | D |
|-------------|----------|----------|----------|----------|----------|
| Straight-in | ILS | 240(44) | 243(47) | 246(50) | 249(53) |
| | 2 NDB | | | | |
| Approach | With FAF | 303(107) | 303(107) | 303(107) | 303(107) |
| | WO FAF | 303(107) | 303(107) | 303(107) | 303(107) |

WARNING
LOM NU is located at 24m left of RWY centre line.

| | | | | | | | | | | | | |
|-----------------------------|---------|------|------|------|------|------|------|------|------|------|------|------|
| GROUND SPEED | km/h | 150 | 180 | 210 | 240 | 270 | 300 | 330 | 360 | 390 | 420 | 450 |
| LOM-THR 3880m | min:sec | 1.33 | 1.18 | 1.06 | 0.58 | 0.52 | 0.47 | 0.42 | 0.39 | 0.36 | 0.33 | 0.31 |
| RATE OF DESCENT (Grad 4.7%) | m/s | 2.0 | 2.4 | 2.7 | 3.1 | 3.5 | 3.9 | 4.3 | 4.7 | 5.1 | 5.5 | 5.9 |