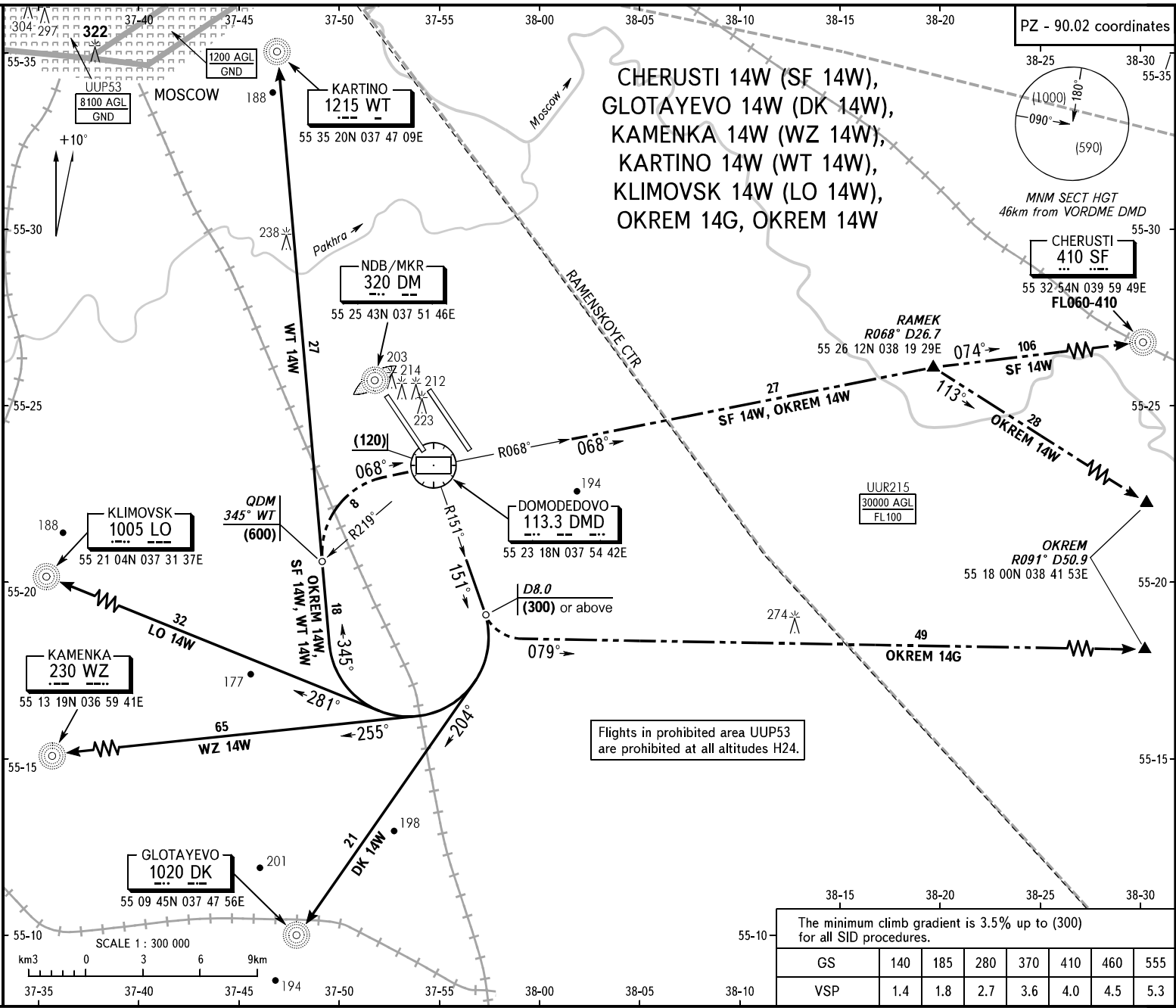


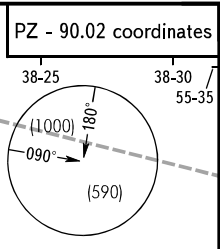
STANDARD DEPARTURE CHART
INSTRUMENT (SID) - ICAO

TRANSITION
HEIGHT : (1000)

MOSCOW, RUSSIA
DOMODEDOVO
RWY 14R

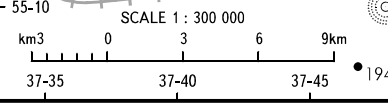


CHERUSTI 14W (SF 14W),
GLOTAYEVO 14W (DK 14W),
KAMENKA 14W (WZ 14W),
KARTINO 14W (WT 14W),
KLIMOVSK 14W (LO 14W),
OKREM 14G, OKREM 14W



The minimum climb gradient is 3.5% up to (300) for all SID procedures.

GS	140	185	280	370	410	460	555
VSP	1.4	1.8	2.7	3.6	4.0	4.5	5.3



DOMODEDOVO TOWER 1 RWY 14R 118.600
RADAR 127.700
APPROACH See AD 2.1 UDD-55
MOSCOW

BEARINGS AND TRACKS ARE MAGNETIC
ALTITUDES, HEIGHTS AND ELEVATIONS ARE IN METRES
DISTANCES ARE IN KILOMETRES

- WARNING:**
1. After take-off and climbing to (200) immediately contact Domodedovo-Radar on 127.700.
 2. The initially cleared height of climb is (600). Further climb is by ATIS unit instruction.
 3. All ACFT shall follow the noise abatement procedures at all times as in accordance with ICAO DOC 8168.
 4. A procedure of simultaneous departures is AVBL.