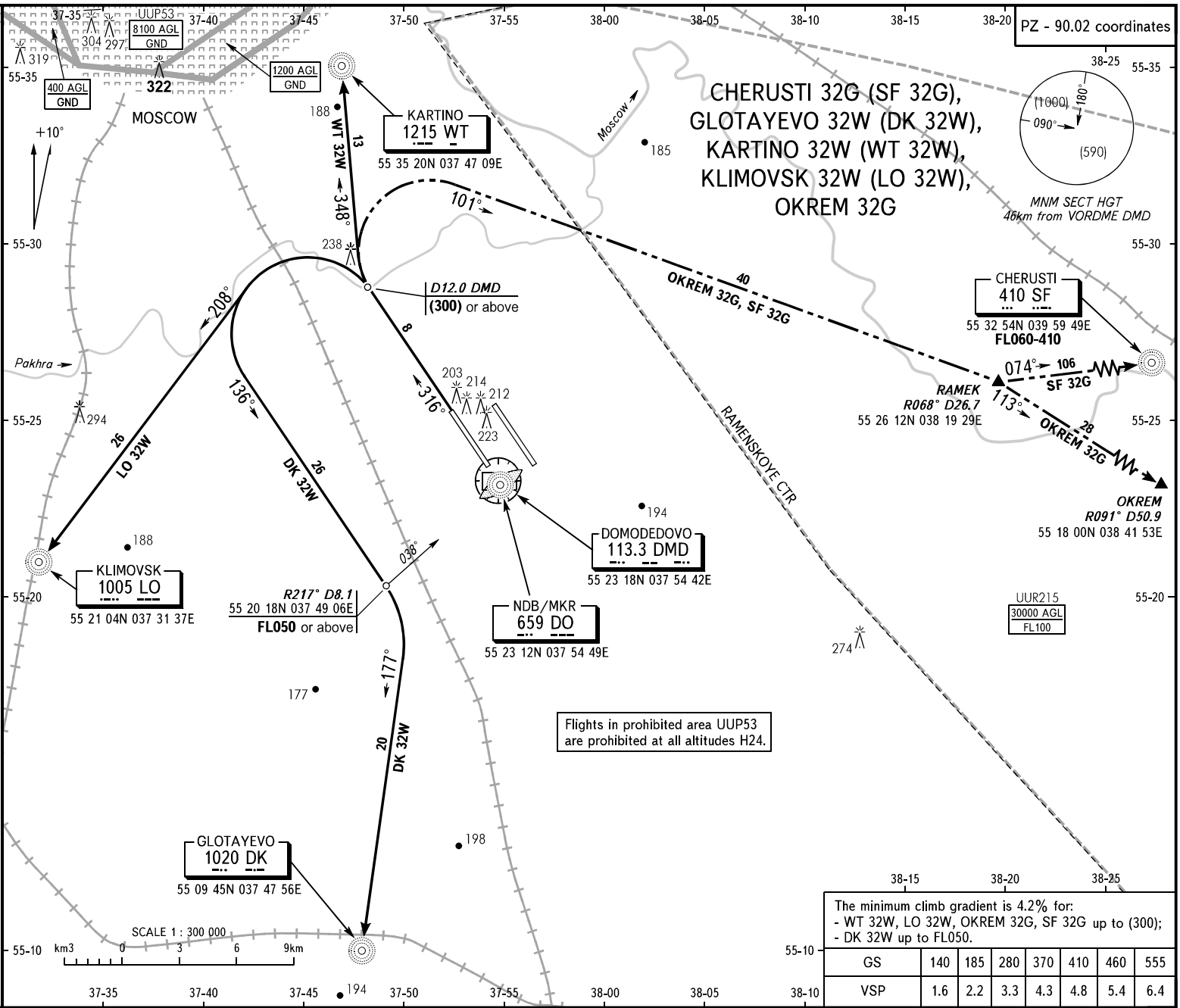


STANDARD DEPARTURE CHART
INSTRUMENT (SID) - ICAO

TRANSITION
HEIGHT : (1000)

MOSCOW, RUSSIA
DOMODEDOVO
RWY 32L



The minimum climb gradient is 4.2% for:

- WT 32W, LO 32W, OKREM 32G, SF 32G up to (300);
- DK 32W up to FL050.

GS	140	185	280	370	410	460	555
VSP	1.6	2.2	3.3	4.3	4.8	5.4	6.4

DOMODEDOVO TOWER 1
RADAR
APPROACH
RWY 32L
118,600
127,700
See AD 2.1 UDD-55

BEARINGS AND TRACKS ARE MAGNETIC
ALTITUDES, HEIGHTS AND ELEVATIONS ARE IN METRES
DISTANCES ARE IN KILOMETRES

WARNING:
1. After take-off and climbing to (200) immediately contact Domodedovo-Radar on 127,700.
2. The initially cleared height of climb is (900), (600) for WT 32W.
Further climb is by ATS unit instruction.
3. All ACFT shall follow the noise abatement procedures at all times as in accordance with ICAO DOC 8168.
4. A procedure of simultaneous departures is AVBL.