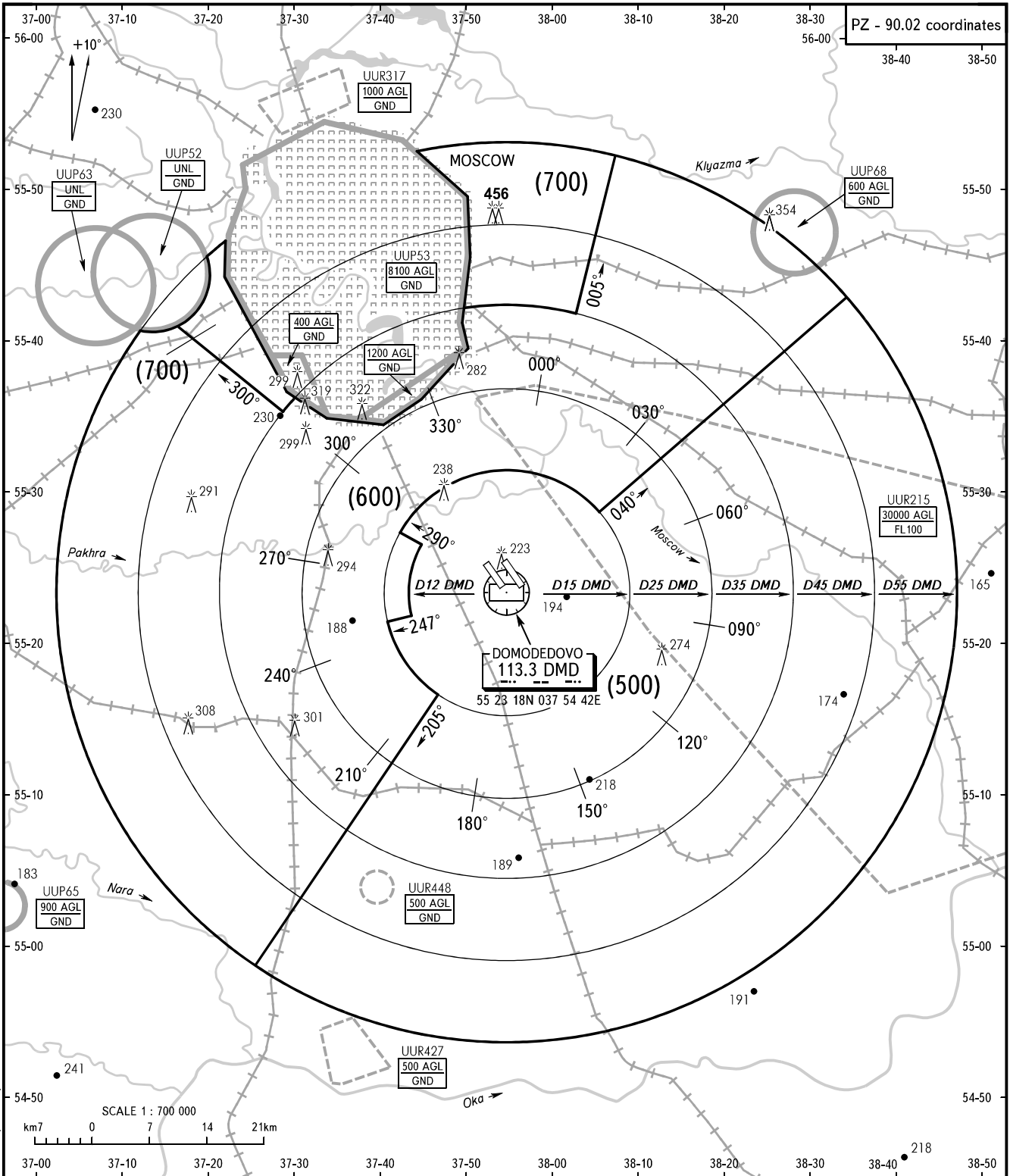


ATC SURVEILLANCE MINIMUM
ALTITUDE CHART- ICAO

MOSCOW, RUSSIA
DOMODEDOVO



MOSCOW	APPROACH	See AD 2.1 UUDD-55
DOMODEDOVO	RADAR	127.700
	TOWER 1	118.600
	TOWER 2	119.700

WARNING:

1. MAX IAS is 460km/h below FL100.
2. Safe heights are given taking into account the temperature corrections.
3. Flights in prohibited areas UUP52, UUP53 and UUP63 are prohibited at all altitudes H24.
4. Restricted areas, active by NOTAM, are published in AIP ENR 5 section.

BEARINGS AND TRACKS ARE MAGNETIC
ALTITUDES, HEIGHTS AND ELEVATIONS ARE IN METRES
DISTANCES ARE IN KILOMETRES

CHANGE: Area UUP53, UUR427, UUR448, COM, CHART TITLE