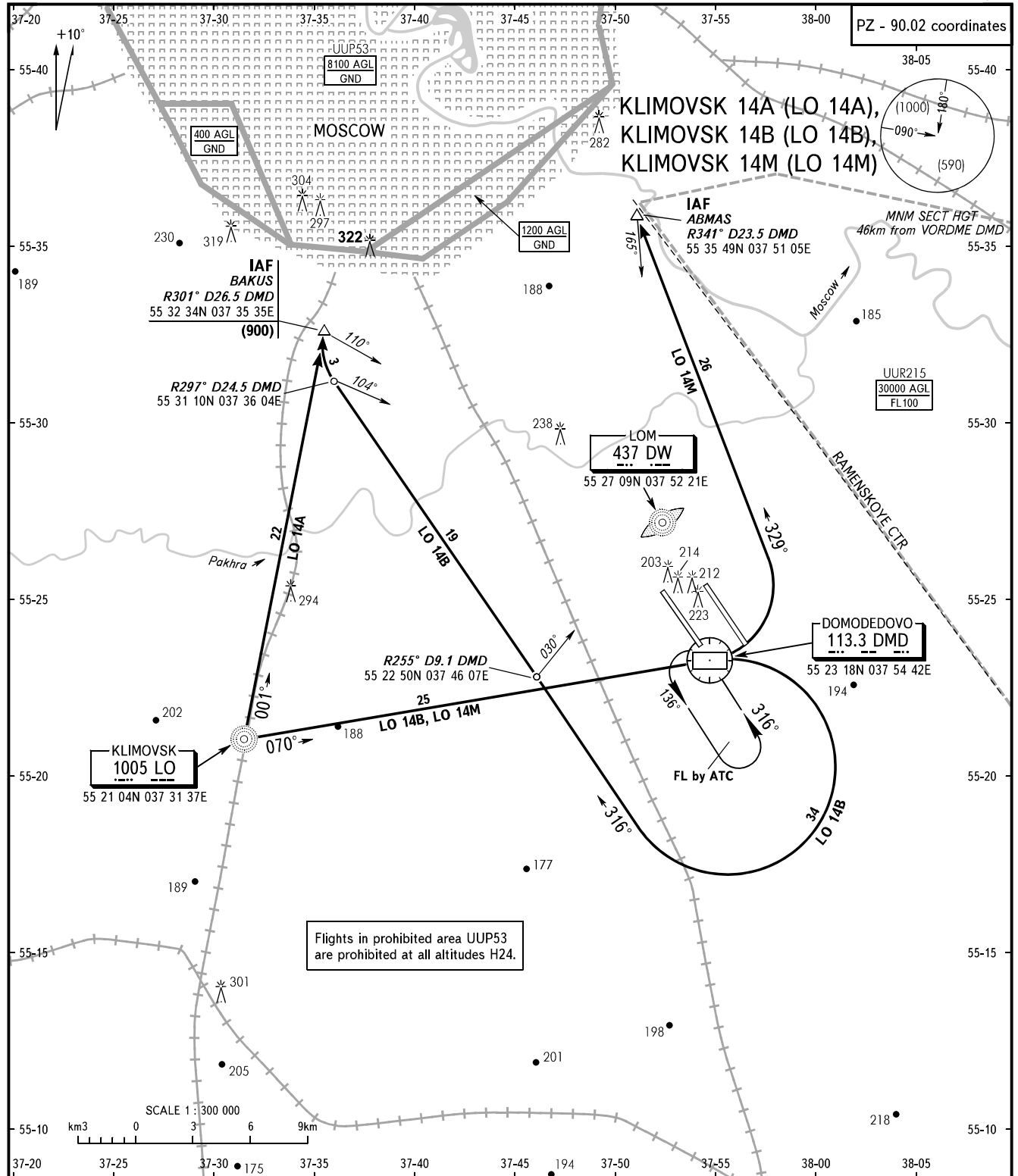


STANDARD ARRIVAL CHART  
INSTRUMENT (STAR) - ICAO

TRANSITION  
LEVEL : **By ATC**

MOSCOW, RUSSIA  
DOMODEDOVO  
RWY 14R/L



|                    |         |                          |
|--------------------|---------|--------------------------|
| DOMODEDOVO TOWER 1 | RWY 14R | <b>118.600</b>           |
| TOWER 2            | RWY 14L | <b>119.700</b>           |
| RADAR              |         | <b>127.700</b>           |
| MOSCOW APPROACH    |         | <b>See AD 2.1 UDD-56</b> |

**WARNING:**  
1. MAX IAS shall be 460km/h at altitudes below FL100.  
2. All ACFT shall follow the noise abatement procedures at all times as in accordance with ICAO DOC 8168.

BEARINGS AND TRACKS ARE MAGNETIC  
ALTITUDES, HEIGHTS AND ELEVATIONS ARE IN METRES  
DISTANCES ARE IN KILOMETRES