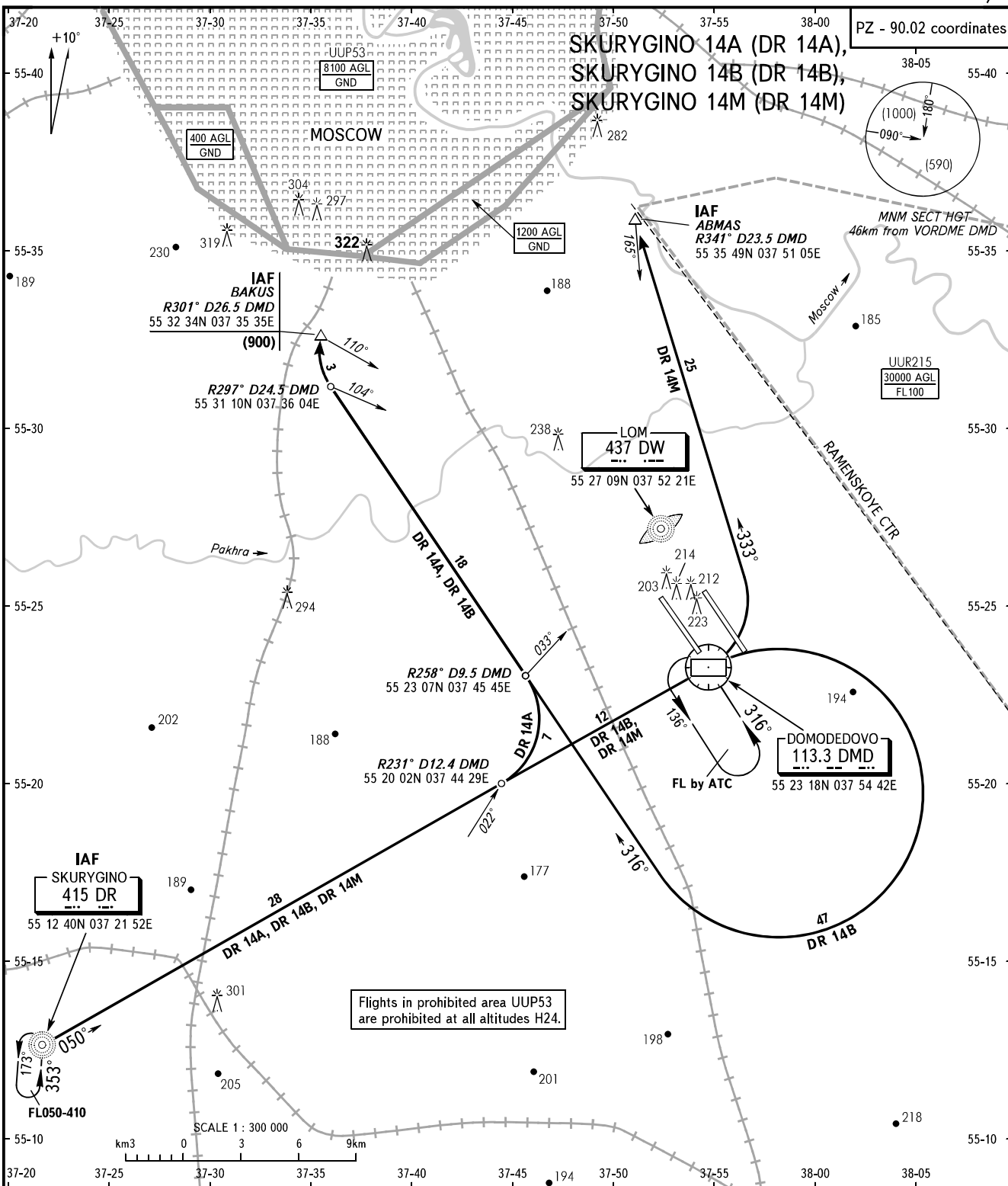


STANDARD ARRIVAL CHART  
INSTRUMENT (STAR) - ICAO

TRANSITION  
LEVEL: By ATC

MOSCOW, RUSSIA  
DOMODEDOVO  
RWY 14R/L



DOMODEDOVO	TOWER 1	RWY 14R	118.600
	TOWER 2	RWY 14L	119.700
	RADAR		127.700
MOSCOW	APPROACH		See AD 2.1 UDD-56

- WARNING:**
- MAX IAS shall be 460km/h at altitudes below FL100.
  - All ACFT shall follow the noise abatement procedures at all times as in accordance with ICAO DOC 8168.

BEARINGS AND TRACKS ARE MAGNETIC  
ALTITUDES, HEIGHTS AND ELEVATIONS ARE IN METRES  
DISTANCES ARE IN KILOMETRES

CHANGE: Area UUP53