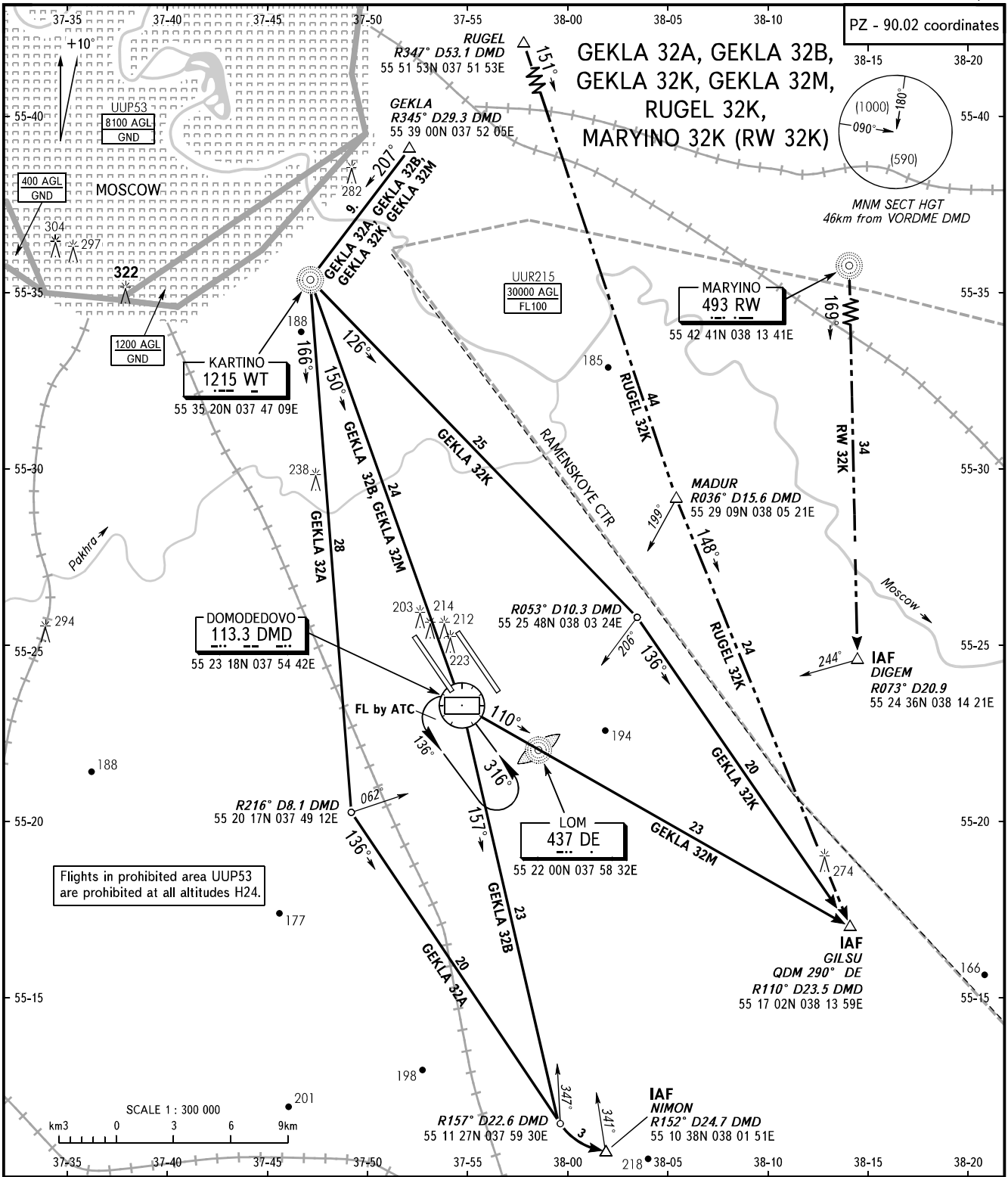


STANDARD ARRIVAL CHART  
INSTRUMENT (STAR) - ICAO

TRANSITION  
LEVEL : By ATC

MOSCOW, RUSSIA  
DOMODEDOVO  
RWY 32L/R



Flights in prohibited area UUP53 are prohibited at all altitudes H24.

DOMODEDOVO TOWER 1	RWY 32L	118.600
DOMODEDOVO TOWER 2	RWY 32R	119.700
DOMODEDOVO RADAR		127.700
MOSCOW APPROACH		See AD 2.1 UDD-56

- WARNING:**
1. MAX IAS shall be 460km/h at altitudes below FL100.
  2. All ACFT shall follow the noise abatement procedures at all times as in accordance with ICAO DOC 8168.

BEARINGS AND TRACKS ARE MAGNETIC  
ALTITUDES, HEIGHTS AND ELEVATIONS ARE IN METRES  
DISTANCES ARE IN KILOMETRES

CHANGE: Area UUP53