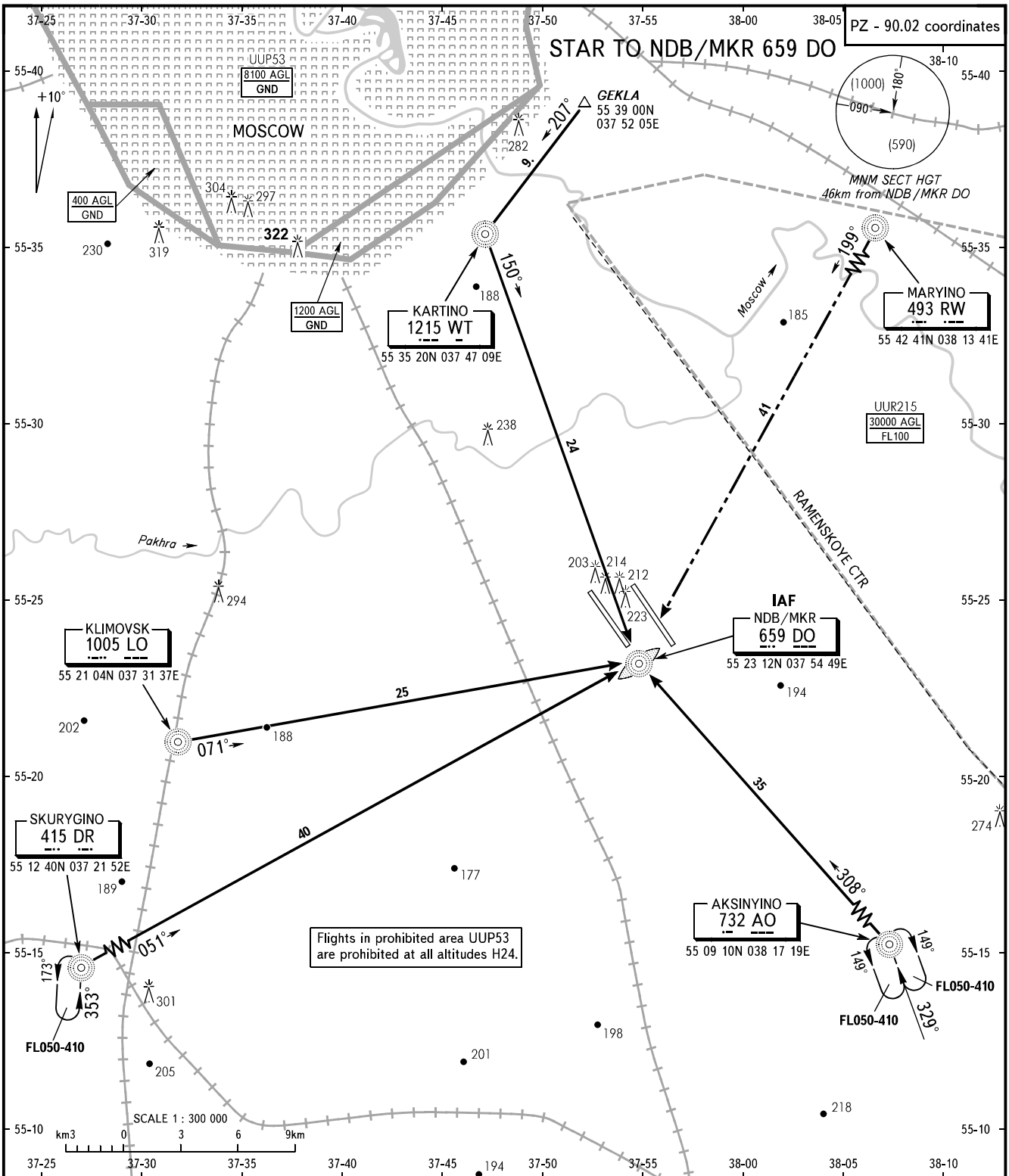


STANDARD ARRIVAL CHART  
INSTRUMENT (STAR) - ICAO

TRANSITION  
LEVEL: By ATC

MOSCOW, RUSSIA  
DOMODEDOVO  
RWY 32L



DOMODEDOVO TOWER 1	RWY 32L	118.600	<b>WARNING:</b> 1. The routes shall be assigned by ATS unit. 2. MAX IAS shall be 460km/h at altitudes below FL100. 3. All ACFT shall follow the noise abatement procedures at all times as in accordance with ICAO DOC 8168.
MOSCOW RADAR	APPROACH	127.700	
		See AD 2.1 UDD-56	

BEARINGS AND TRACKS ARE MAGNETIC  
 ALTITUDES, HEIGHTS AND ELEVATIONS ARE IN METRES  
 DISTANCES ARE IN KILOMETRES

CHANGE: Area UUP53