

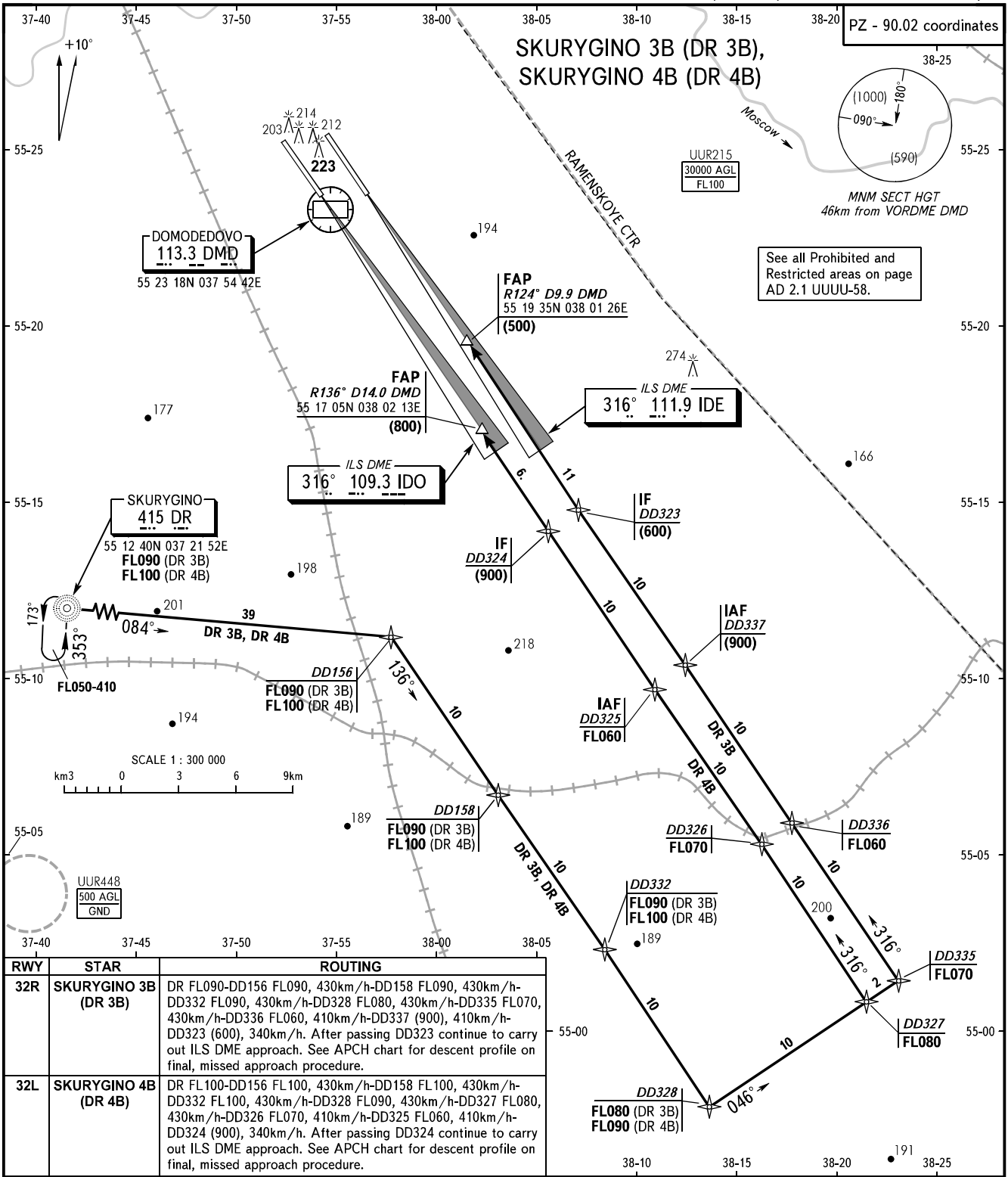
STANDARD ARRIVAL CHART
INSTRUMENT (STAR) - ICAO

TRANSITION
LEVEL: **By ATC**

MOSCOW, RUSSIA

DOMODEDOVO

RNAV (GNSS) ILS DME RWY 32L/R



See all Prohibited and Restricted areas on page AD 2.1 UUUU-58.

RWY	STAR	ROUTING
32R	SKURYGINO 3B (DR 3B)	DR FL090-DD156 FL090, 430km/h-DD158 FL090, 430km/h-DD332 FL090, 430km/h-DD328 FL080, 430km/h-DD335 FL070, 430km/h-DD336 FL060, 410km/h-DD337 (900), 410km/h-DD323 (600), 340km/h. After passing DD323 continue to carry out ILS DME approach. See APCH chart for descent profile on final, missed approach procedure.
32L	SKURYGINO 4B (DR 4B)	DR FL100-DD156 FL100, 430km/h-DD158 FL100, 430km/h-DD332 FL100, 430km/h-DD328 FL090, 430km/h-DD327 FL080, 430km/h-DD326 FL070, 410km/h-DD325 FL060, 410km/h-DD324 (900), 340km/h. After passing DD324 continue to carry out ILS DME approach. See APCH chart for descent profile on final, missed approach procedure.

DOMODEDOVO TOWER 1	RWY 32L	118.600
TOWER 2	RWY 32R	119.700
RADAR		127.700
MOSCOW APPROACH		See AD 2.1 UUDD-56

WARNING:

- MAX IAS shall be 460km/h at altitudes below FL100.
- All ACFT shall follow the noise abatement procedures at all times as in accordance with ICAO DOC 8168.

BEARINGS AND TRACKS ARE MAGNETIC
ALTITUDES, HEIGHTS AND ELEVATIONS ARE IN METRES
DISTANCES ARE IN KILOMETRES

CHANGE: Area UUR448