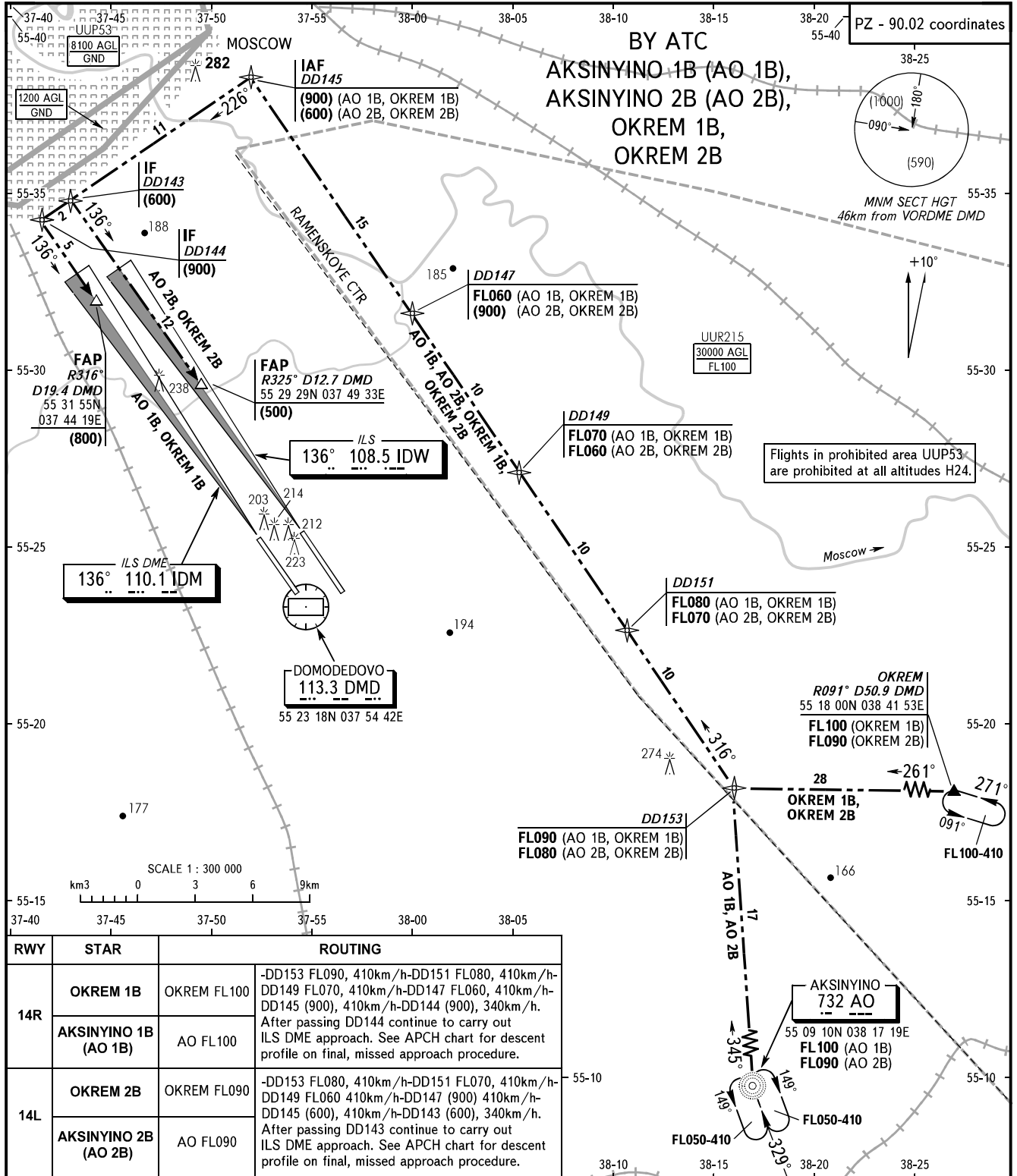


STANDARD ARRIVAL CHART
INSTRUMENT (STAR) - ICAO

TRANSITION
LEVEL: **By ATC**

MOSCOW, RUSSIA
DOMODEDOVO
RNAV (GNSS) ILS DME RWY 14R/L



RWY	STAR	ROUTING
14R	OKREM 1B	OKREM FL100 -DD153 FL090, 410km/h-DD151 FL080, 410km/h-DD149 FL070, 410km/h-DD147 FL060, 410km/h-DD145 (900), 410km/h-DD144 (900), 340km/h. After passing DD144 continue to carry out ILS DME approach. See APCH chart for descent profile on final, missed approach procedure.
	AKSINYINO 1B (AO 1B)	AO FL100
14L	OKREM 2B	OKREM FL090 -DD153 FL080, 410km/h-DD151 FL070, 410km/h-DD149 FL060 410km/h-DD147 (900) 410km/h-DD145 (600), 410km/h-DD143 (600), 340km/h. After passing DD143 continue to carry out ILS DME approach. See APCH chart for descent profile on final, missed approach procedure.
	AKSINYINO 2B (AO 2B)	AO FL090

DOMODEDOVO TOWER 1	RWY 14R	118.600
DOMODEDOVO TOWER 2	RWY 14L	119.700
MOSCOW RADAR		127.700
MOSCOW APPROACH		See AD 2.1 UDD-56

WARNING:
1. MAX IAS shall be 460km/h at altitudes below FL100.
2. All ACFT shall follow the noise abatement procedures at all times as in accordance with ICAO DOC 8168.

BEARINGS AND TRACKS ARE MAGNETIC
ALTITUDES, HEIGHTS AND ELEVATIONS ARE IN METRES
DISTANCES ARE IN KILOMETRES