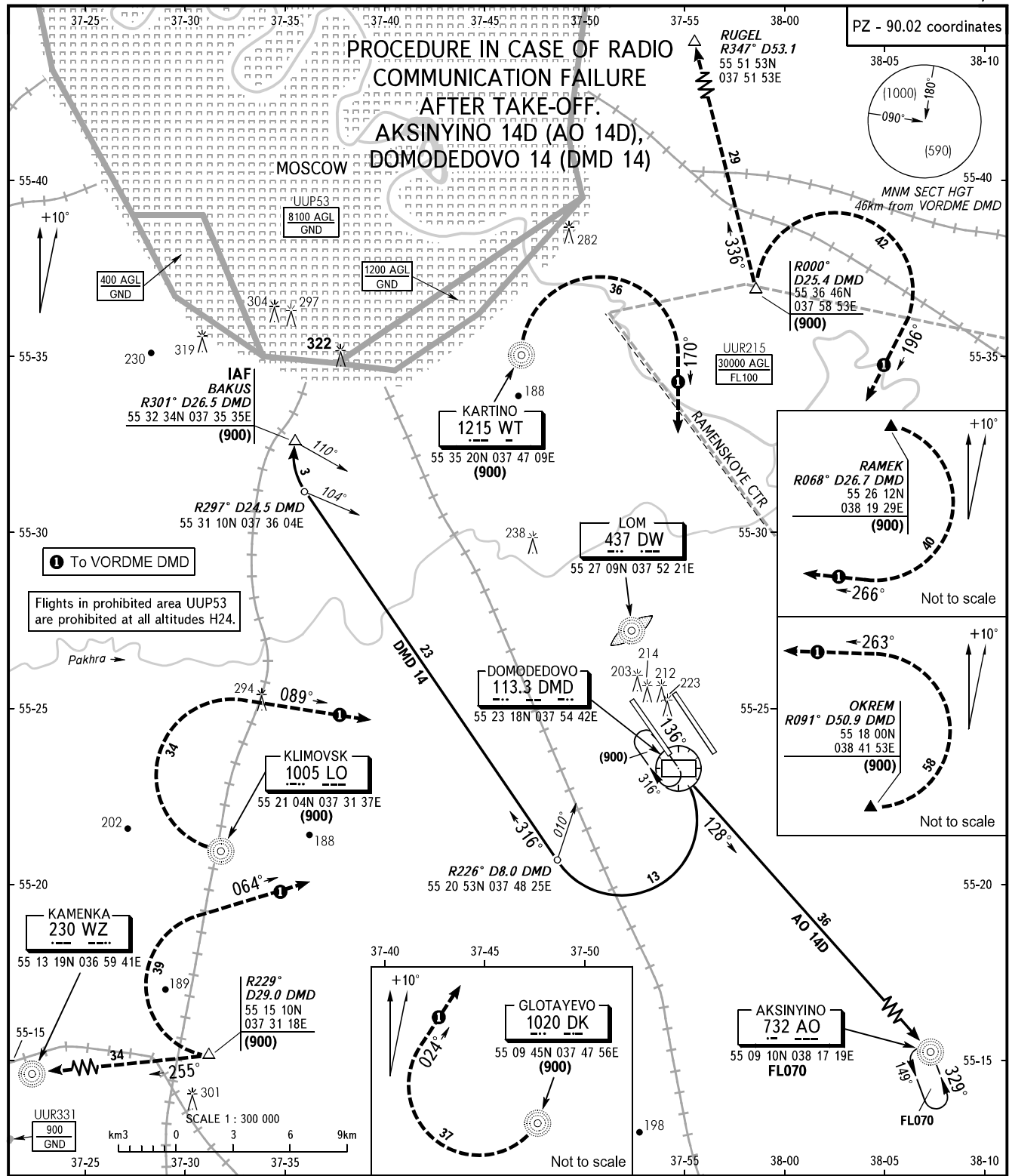


STANDARD ARRIVAL CHART
INSTRUMENT (STAR) - ICAO

TRANSITION
LEVEL : Via ATIS

MOSCOW, RUSSIA
DOMODEDOVO
RWY 14R/L



DOMODEDOVO TOWER 1	RWY 14R	118.600
DOMODEDOVO TOWER 2	RWY 14L	119.700
MOSCOW RADAR		127.700
MOSCOW APPROACH		See AD 2.1 UDD-56

- WARNING:**
1. MAX IAS shall be 460km/h at altitudes below FL100.
 2. All ACFT shall follow the noise abatement procedures at all times as in accordance with ICAO DOC 8168.

BEARINGS AND TRACKS ARE MAGNETIC
ALTITUDES, HEIGHTS AND ELEVATIONS ARE IN METRES
DISTANCES ARE IN KILOMETRES

CHANGE: Area UUP53