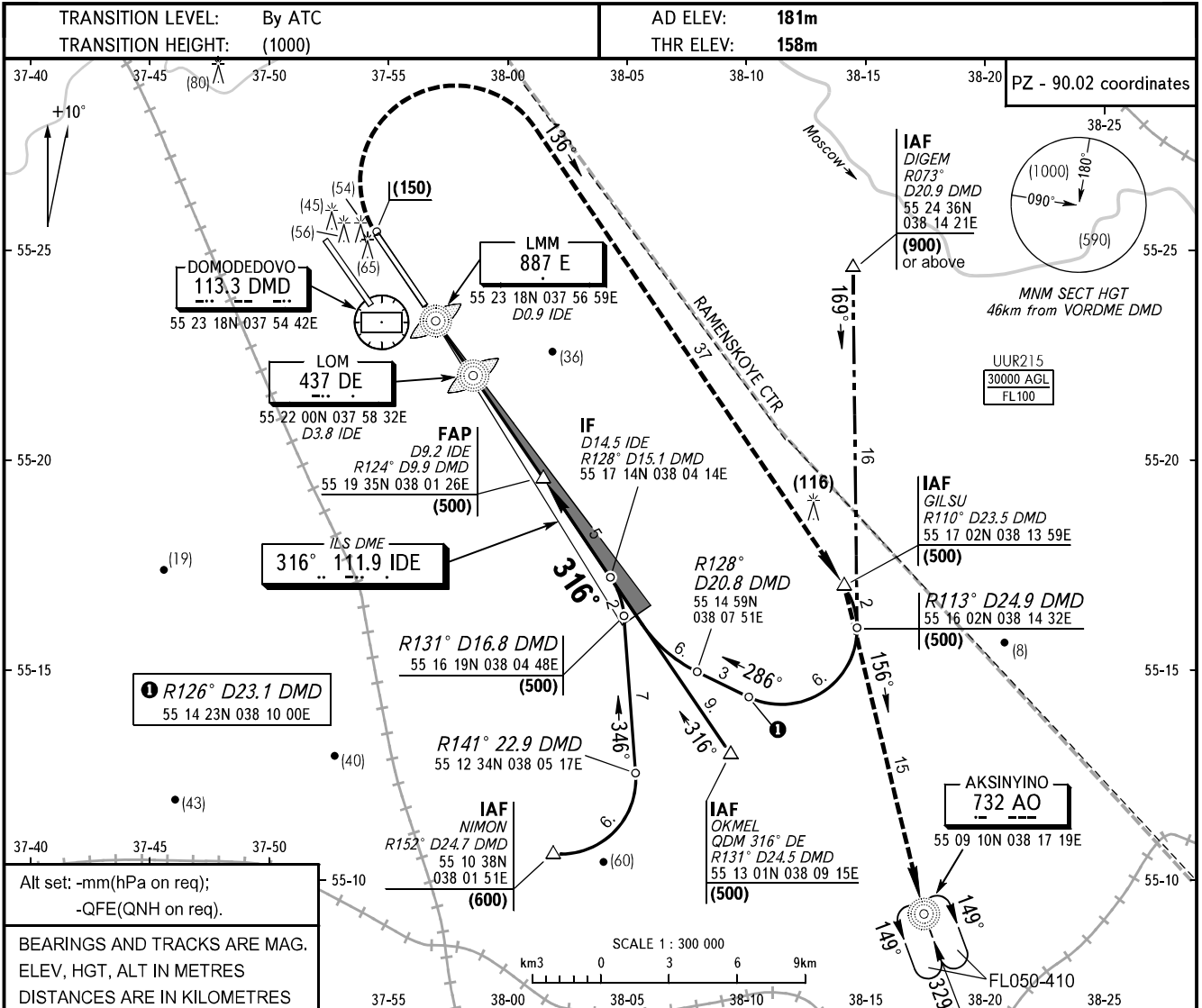


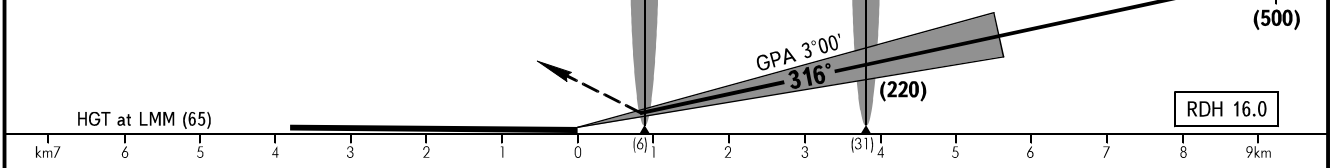
**INSTRUMENT  
APPROACH  
CHART - ICAO**

TOWER 2	<b>119.700</b>
DOMODEDOVO RADAR	<b>127.700</b>

**MOSCOW, RUSSIA  
DOMODEDOVO  
ILS DME RWY 32R**



**MISSED APPROACH**  
Climb straight ahead to (150) or D0.0 IDE, whichever is later, turn RIGHT onto track 136° and proceed to GILSU climbing to (500), after passing GILSU turn onto track 156° and proceed to Aksinyino NDB climbing to (900) or by ATS unit instruction.



OCA/H		A	B	C	D								
Straight-in Approach	<b>CAT I</b>	207(49)	209(51)	211(53)	214(56)								
	<b>CAT II</b>	173(15)	177(19)	180(22)	184(26)								
	<b>CAT IIIA</b>	DA(H) 173(15) RVR 200m											
GROUND SPEED		km/h	150	180	210	240	270	300	330	360	390	420	450
LOM-THR 3800m		min:sec	1.31	1.16	1.05	0.57	0.51	0.46	0.41	0.38	0.35	0.33	0.30
RATE OF DESCENT		m/s	2.2	2.6	3.0	3.5	3.9	4.3	4.8	5.2	5.6	6.1	6.5