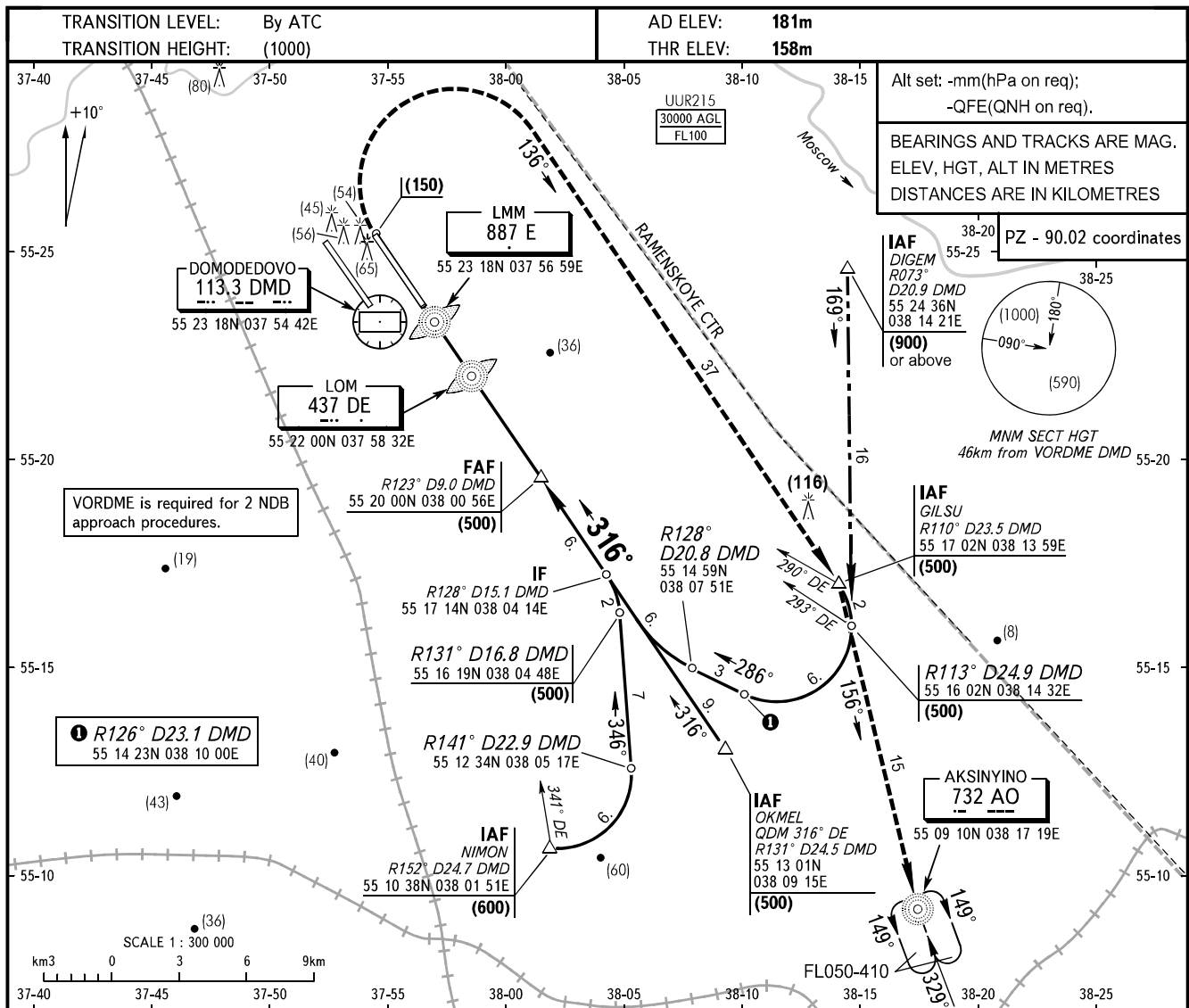


**INSTRUMENT
APPROACH
CHART - ICAO**

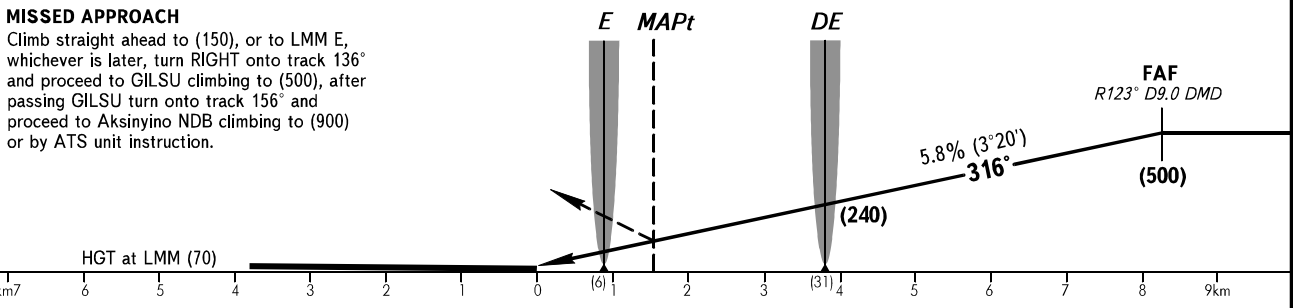
TOWER 2	119.700
DOMODEDOVO RADAR	127.700

**MOSCOW, RUSSIA
DOMODEDOVO
2 NDB RWY 32R**



MISSED APPROACH

Climb straight ahead to (150), or to LMM E, whichever is later, turn RIGHT onto track 136° and proceed to GILSU climbing to (500), after passing GILSU turn onto track 156° and proceed to Aksinyino NDB climbing to (900) or by ATS unit instruction.



OCA/H		A	B	C	D								
Straight-in	2 NDB	266(108)	266(108)	266(108)	266(108)								
	Approach												
GROUND SPEED		km/h	150	180	210	240	270	300	330	360	390	420	450
LOM-MAPt 2 NDB 2265m		min:sec	0.54	0.45	0.39	0.34	0.30	0.27	0.25	0.23	0.21	0.19	0.18
RATE OF DESCENT		m/s	2.4	2.9	3.4	3.9	4.4	4.8	5.3	5.8	6.3	6.8	7.3